




**Y Coleg
Merthyr Tudful**
The College
Merthyr Tydfil

2023-2024

A Levels & Further Education Courses

Your College, Your Choice, Your Future



**University of
South Wales**
Prifysgol
De Cymru

The College Merthyr Tydfil is
part of the University of South
Wales Group
Y Coleg Merthyr Tudful rhan
o Grŵp Prifysgol De Cymru

Contents

- 3 Welcome
- 4 Why Choose Us?
- 5 Our Class of 2022 – Success Stories
- 6 Outstanding Learner and Pastoral Support
- 7 Learning Zone
- 9 Welsh and Bilingual Opportunities
- 10 Future Pathways – Employability and Enterprise support
- 11 Supporting your Progression on to University
- 12 Student Life
- 13 Teaching and Learning
- 14 More Able and Talented
- 15 Sports Academy
- 17 Choosing the Right Course
- 18 Qualifications on Offer
- 19 Apprenticeships & Traineeships
- 20 A Levels and Level 3 Vocational Courses
- 21 A Level Provision for 2023/2024
- 22 Accountancy
- 23 Business and Management
- 24 New for 2023
- 25 Children's Care, Play, Learning and Development
- 26 Construction
- 29 Creative Industries
- 31 Digital Industries
- 33 Electrical Installation
- 34 Engineering
- 36 ESOL
- 38 Foundation Learning
- 39 Hairdressing & Beauty
- 40 Health & Social Care
- 41 Humanities, Social Sciences & Languages
- 43 Motor Vehicle Technology
- 44 Science & Mathematics
- 46 Sport
- 47 Setup
- 48 Public Services and Outdoor Adventure
- 49 Travel & Tourism
- 50 Access to HE
- 51 HE Courses
- 54 Panasonic Trust Future Engineers Award
- 55 Personal Learning Accounts (PLA)
- 56 Next Steps

Academic Year 2023/2024

Course Enrolment

Monday 21st August – Friday 1st September 2023

Induction Week – Monday 4th September – Friday 8th September 2023

Open Events

Whether you are a school leaver thinking about your next steps or an adult learner seeking to develop your skills or qualifications further, our open evenings provide the perfect opportunity for you to come in and view our facilities, meet our staff and talk to current students about their experiences of studying with us.

Come and see us on:

Thursday 27th October 2022

Tuesday 17th January 2023

Wednesday 8th March 2023

Thursday 27th April 2023

Monday 22nd May 2023 – specific HE and part-time open event

For details of information sessions taking place at local secondary schools, please visit: www.merthyr.ac.uk

A Level results day

Advice and Guidance 'drop in' session Thursday 17th August 2023 from 8.00am

GCSE results day

Advice and Guidance 'drop in' session Thursday 24th August 2023 from 8.00am

Keep in touch with us!

Follow us on Facebook, Twitter and Instagram to keep up to date on all of our college news.

[/collegemerthyrtydfil](https://www.facebook.com/collegemerthyrtydfil)

[@CollegeMerthyr](https://www.instagram.com/CollegeMerthyr)



Use your smartphone to scan this code and it will take you to our website.

College Merthyr Tydfil embraces the Equality Act 2010 and complies with the Public Sector Equality Duty. Our Strategic Equality Plan can be viewed on the college web pages.

The college has taken every effort to ensure that this course guide is as accurate as possible at the time of going to print. It is intended as a general guide to college courses and facilities and forms no part of a contract. The college reserves the right to make changes or withdraw, without notice, any of the courses, course facilities or support described.

Welcome to The College Merthyr Tydfil

Whether you are a student leaving school in 2023, or a prospective further or higher education learner, we offer a unique opportunity to study at a modern and exciting campus that offers state of the art learning for all, right in the heart of Merthyr Tydfil.

The College Merthyr Tydfil offers something for everyone, with an extensive range of full time and part time courses, including a wide range of AS and A Levels, vocational courses and further and higher education programmes – all delivered by a highly qualified and dedicated teaching team.

We offer a first class learning experience to all who study here. Our commitment to your learning experience, together with our award winning facilities, comprehensive course choices, outstanding student support will ensure that you can achieve your maximum potential and successfully gain the qualifications you require to progress to further, higher education or employment.

In addition, our partnership with REDHOUSE (Old Town Hall/ Hen Neuadd Y Dref) enables learners wishing to study in creative and performing arts the opportunity to study in a specialised creative industries centre.

We hope this course guide provides you with some of the information that you require on the courses on offer and general life at the college.

We look forward to welcoming you to study at The College Merthyr Tydfil in 2023.

LISA THOMAS, College Principal

Lisa Thomas



Lisa Thomas, College Principal



Why Choose Us?

Top Performing A Level Academy

- Offering a range of A Levels across a broad range of subject areas
- 99% A Level pass rate – the highest amongst all further education colleges in Wales

Vocational Centre of excellence

- Highest performing college for vocational courses
- Offering over 60 different vocational qualifications and routes from business through to construction, engineering, sport, hair and beauty and many more
- 100% success rate across many vocational areas
- Comprehensive range of traineeship and apprenticeship opportunities

High quality teaching and learning

- Innovative and inspiring lessons
- Commitment to training all staff on the OLEVI Outstanding Teacher programme
- Microsoft Showcase College



Fantastic Enrichment Programme

- Sports Academy offering netball, football, rugby, basketball, table tennis and golf
- Wide range of lunchtime and after college clubs in areas such as computer programming, debating, dance and E-Sports etc
- Opportunity to participate in Welsh and National Skills competitions

First-class facilities

- Modern, state of the art facilities
- Dedicated Creative Industries facilities at Redhouse
- State of the art gym and fitness suite, brand new Golf Suite with simulator, first class Gaming and E-Sports suites



Exciting range of extra-curricular activities including European educational trips and placements

- Exciting range of international and european educational trips and visits e.g. Business annual trip to New York and work experience placements

Opportunity to participate in prestigious university and work placements

- Excellent links with the Seren 'Oxbridge' Hub to provide opportunities for learners to engage with elite universities
- Dedicated UCAS co-ordinators to help learners engage with initiatives such as the Cambridge STEP programme and Oxford University Summer school
- Dedicated Futures Pathways Team to help learners become 'employment ready'

Friendly and welcoming environment

- Friendly, supportive and nurturing staff who are dedicated to providing each and every learner with the best experience possible

Outstanding pastoral care and support

- Personal and course tutors
- Designated Learning Coach team to support additional learning needs
- Dedicated Learner Welfare and Mental and Emotional Health and Well-Being Support team



Our Class of 2022 – Success Stories

Our class of 2022 achieved exceptional results with a 99% pass rate at A Level and 100% pass rate across many vocational areas.

Afon Taf High School



Former Afon Taf learner Demi Williams, a Level 2 going on to Level 3 Painting & Decorating learner, commented on her course saying "The first year of my foundation course consisted of two trades, carpentry & joinery and painting & decorating.

The second year allows you to follow your chosen trade. I chose Painting & decorating. I enjoy working with amazing colours and fancy wallpapers; I really look forward to seeing the final outcome. I enjoy both the theory and practical sessions. The practical sessions are made to feel realistic, this gives a great sense of pride when looking back at the finished task and I can't wait to produce these finishes in homes around the country. I found the theory sessions very useful to build my knowledge and confidence enabling me to carry out the tasks to the best of my abilities".

Cyfarthfa High School



Abbie Williams, former Cyfarthfa High School pupil, achieved an outstanding A*A* A* A* in Maths, Biology, Chemistry and Psychology and has now progressed on to study Bio-Medical Science at Manchester University.

Pen Y Dre High School



Former Pen Y Dre High School pupil Ethan Scriven achieved a D*D*D in his BTEC Level 3 Travel and Tourism course. Ethan commented "I am overwhelmed by the support I have had since studying at college. Any worries or issues I have, a member of staff is always on hand to offer advice. As a Travel

and Tourism student, the staff have motivated me to develop my career within the industry and I hope to work abroad after completing my course."

Blessed Carlos Acutis



Menna Owen, past Blessed Carlos Acutis pupil, achieved an A* in Sociology, A in Business and an A in Psychology, enabling her to progress on to study HR Management at Leeds University. Commenting on her results, Menna said, "I really enjoyed studying A - Levels at the college over the last two years. The support I received was amazing and has prepared me well for university."



www.merthyr.ac.uk

Outstanding Learner and Pastoral Support

We pride ourselves on our high quality teaching and learning, but this is only part of the picture.

Every learner matters to us - you are all unique. In addition to providing a wide range of courses, we also provide an environment in which learners of every ability and ambition, can succeed. This might be in terms of the qualifications you gain, the new skills you acquire, or the extracurricular or entrepreneurial activities you take part in. Throughout your time with us, you can be rest assured that we will provide each and every one of you with the care and support that you deserve. We are committed to respecting culture, celebrating diversity and promoting a safe learning community for all. Many of our learners and visitors often comment about how friendly, safe and welcoming the college environment is.



Admissions Team

Your journey at the college begins with the Admissions process. We have a dedicated Admissions and Enquiries team who will support you through your application and enrolment process.

We will provide you with advice, support and guidance to help you choose the right course for you and be your first point of contact for any queries you have related to completing your application form or attending your interview. Once you have been made an offer, we will help

ensure that you have all of the information you require on transport and funding to help with the cost of your studies and also help to ensure that your transition into college is as smooth as possible.

Wellbeing Hub

Our dedicated Wellbeing Hub provides an integrated support system for learners, with expert, advice, guidance and support focussing on all aspects of mental and emotional health and wellbeing, including safeguarding, Additional Learning Needs support, Inspire to Achieve (I2A), study skills support along with medical and therapeutic inputs from a Nurse Practitioner and Counsellor. Members of the team are also available to attend school transition reviews as part of the admissions process for college.

Financial Support

Our Finance team are here to provide you with support, help and guidance on all aspects of funding and travel to college. We have a range of grants and bursaries to help with the costs of your study.

Scholarships

The college offers a range of scholarships for learners. For further information, please contact Shelby Berry on s.berry@merthyr.ac.uk

Help with the costs of transport

If you are aged 16, 17 or 18 years on September 1st 2023 and planning to study full-time you may be eligible for free transport.

Learning Zone

The college has a dedicated Learning Zone which provides access to a wide range of high quality services, facilities and support for learners at all levels.



Resources include:

- Print & electronic books and journals
- Print & electronic subject guides
- I.T facilities, including free Wifi
- Study spaces designed for both individual, silent study and group work
- An online public access catalogue Findit to locate, reserve & request items and manage personal borrowing
- Access to a range of user education sessions designed to support you in your studies

Learners will also have access to resources held at the other site libraries within the University of South Wales group, through the inter-site request system.

Information for Parents/Carers

The College Merthyr Tydfil will represent a brand new learning experience for your son and daughter and we're keen to ensure that we provide as much information, advice and guidance to support both you and them to make the right decision about the course(s) they wish to study at the college and ensure that their transition from school to college is as smooth as possible.

Working with you to support your son/daughter's progress at college

Like secondary schools, we welcome the involvement of parents/carers and will work with you to ensure that your son/daughter achieves their maximum potential. The reason for this is that we know that the students who perform best are those who do three things:

- Work hard
- Are supported and taught by high quality and committed teachers
- Are supported and encouraged by parents

Therefore, we will ensure that you:

- Play a full role in the partnership between your son/daughter and the college
- Have an opportunity to come in at the beginning of term to meet your son's/daughter's tutors
- Are informed straight away about any instances of non-attendance
- Receive comprehensive, accurate and timely information from the college throughout the duration of their chosen course of study, including college newsletters
- Receive progress reports on your son/daughter twice yearly
- Attend a parents/carers evening twice yearly to discuss your son/daughter's performance

“My time at college has been very successful. I chose Electrical Installation to help improve my chances of gaining an apprenticeship in the Electrical Industry...”

JAY DAVIES

Former Cyfathfa High School pupil



Welsh and Bilingual Opportunities

The College is committed to providing a Welsh language ethos and culture across the college environment.

The college offers many opportunities for learners who want to practice, improve and use their Welsh skills both in the workplace and in a learning environment.

Our dedicated Bilingual Champion is here to help and support learners through:

- ▶ Providing subject specific study skills support
- ▶ Providing a dedicated Welsh room (Shwmaeronment room) for all learners across the college
- ▶ Offering a comprehensive programme of Welsh medium enrichment activities
- ▶ Providing bilingual glossaries and vocabulary
- ▶ Welsh medium mock interviews and guidance to write CVs and cover letters
- ▶ Opportunity to participate in Welsh cultural events
- ▶ Look out for our themed Welsh events, activities and clubs that take place throughout the academic year

Welsh language Scholarships

Our Welsh language scholarships are available to students studying the Welsh Baccalaureate programme at the College.

- ▶ Students will have the opportunity to produce their work through the medium of Welsh
- ▶ The scholarships are £100 each
- ▶ To qualify for the scholarships, students must apply for a full-time course at college

Case Study

DAISY WRIGGLESWORTH

“My name is Daisy and I am a student at the college. As a Welsh speaker, I have so many opportunities to use my Welsh language through Welsh language scholarships, joining the Welsh language team and becoming a Welsh language ambassador. These opportunities have helped me to develop my skills and use the Welsh language with confidence!”

Welsh Ambassador Scholarships

The college is looking for Welsh language ambassadors to share your student experience and promote the Welsh language throughout the college and public events. Embracing the language will help you gain invaluable skills to benefit you now and in the future such as:

- ▶ Enhance your personal knowledge and improve your skills, particularly in marketing, communication, organisation, planning, leadership and team work
- ▶ Gain experience and boost your confidence
- ▶ Meet new friends
- ▶ Add to your CV and improve your employment prospects



Case Study

MORGAN EVANS

“Since leaving school, I had no confidence in using the Welsh language however, the Welsh language team supported me to develop my confidence in using the Welsh

language. I have now become a Welsh language ambassador, representing the college in all events throughout the year and helping out in Welsh club. I really enjoy the college’s Welsh language opportunities which have allowed me to continue my links with the language and use it with confidence. Being a part of the Welsh language team has made me realise the importance of having that extra skill, and I enjoy emphasising the importance of Welsh language to learners and staff”.

For more information contact Lynwen Harrington on 0168572600 ext 6331 or email l.harrington@merthyr.ac.uk

FUTURE PATHWAYS

Future Pathways Employability and Enterprise Support

Future Pathways is our dedicated Employability and Enterprise team offering bespoke employability, enterprise, career and progression advice.

We host a variety of learner workshops, drop-in sessions, open evenings, volunteering and career events throughout the year.

Follow our dedicated Twitter page @pathwaysfuture for regular updates on job vacancies, career advice, events, live sessions, guest speakers and employability opportunities across Wales and the UK.

Drop into the Future Pathways Hub for help with:

- › CV development
- › Cover letters
- › Job applications
- › Interview skills
- › Presentation skills
- › Career pathway advice
- › Work placements
- › Starting your own business
- › Welsh in the Workplace

Ask us about:

- › Bootcamps (Big Ideas Wales)
- › Role Model sessions
- › Volunteering opportunities
- › Work placements
- › Apprenticeships and training

Come along to meet a wide range of employers, volunteering charities, universities, career mentors and business advisors! We work closely with a large number of local and national employers and collaborate closely with Job Centre Plus and Careers Wales to keep abreast of latest job vacancies and training opportunities.

Our aim is to ensure that every learner receives the best possible advice and guidance, receiving regular updates on progression and current employability opportunities.

Our Student Services team can also advise on funding and signpost to the most appropriate courses.

In conclusion, we provide a 'one stop shop' for Employability, Enterprise and Progression at the college; embracing the learner experience to ensure that the learning journey is enjoyable and rewarding.

Contact our Head of Employability and Enterprise, Christine Bissex for further information on: 01685 726175 or email: c.bissex@merthyr.ac.uk

Working in partnership with:

- | | |
|---|--|
| › JNP Legal | › Tenneco |
| › Transport for Wales | › Future Valleys Construction |
| › Morgan Sindall Construction | › Active Merthyr |
| › Tilbury Douglas | › Golf Wales |
| › Panasonic | › Cyber Cymru Wales |
| › Cwm Taf Morgannwg University Health Board | › RCN Nursing Cadet Scheme |
| › Philtronics Limited | › Prince Charles Hospital Supported Internship Programme |

Supporting your Progression on to University

If you are seeking to progress on to university, we offer a tailored programme of support to help you along the way. This includes:

- › Dedicated college UCAS co-ordinators to guide you every step of the way through the UCAS process
- › Help and support to develop your personal statements (including sessions run by leading universities)
- › Programme of interview support, including mock interviews with panels of college staff, university advisors and representatives from industry
- › Comprehensive range of enterprise activities to help you develop a range of transferable skills, build your confidence and gain experience of real life business situations
- › Annual College Career Pathways Event to enable you to talk to employers and universities about career and higher education options

The programme includes:

- › University level courses
- › Motivational speakers
- › Higher education conferences organised by Oxford and Cambridge universities
- › Student support with university entry exams
- › Motivational talks from invited guests and college alumni
- › Access to the Brilliant Club
- › Individual student support with university entry exams from experienced tutors

Oxbridge hub – Seren

Students who achieve six or more A* grades at GCSE Level will be able to take part in the Merthyr Tydfil/Rhondda Cynon Taff Seren Hub.



Supporting more able and talented learners

The college is committed to supporting its high aspiring students. We have a dedicated and unique programme of activities and events, which will enable you to stand out from other equally able students from across the country.

THE
SEREN
NETWORK



Student Life

Your time at the college can be an enjoyable and rewarding experience. How enjoyable and rewarding it is, depends on you! Our college Enrichment programme provides a fantastic range of activities and programmes for you to enjoy, from yoga, gym and fitness sessions, golf, basketball, football, E-Sports, Welsh club, debating, chess club, board games club, educational trips and visits and much more!

Case study

CERITH DENNIS

A member of our E-Sports Tydfil Tytans team was successful in achieving a bronze medal in the eFootball Open at the Commonwealth Esports Championships.



Why not consider applying for one of our Learner Ambassador Scholarships

This is an exciting role offering you the opportunity to volunteer during open evenings, Parents Evenings, Taster Days and marketing events at your former schools. This could involve meeting and greeting prospective learners and their parents/carers, providing tours of the college building and facilities, chatting to prospective learners about your experience at college, or just helping out your course tutors during key college events. This experience will look fantastic on your CV or UCAS application form. Being an ambassador will enable you to share your experience and gain invaluable skills to benefit you now and in the future.

Learner Senedd

The Learner Senedd provides a forum where learners can come along and have their say on the development of the college, your learning and your wellbeing. Meetings are held on a monthly basis. Representatives will be elected in September of each year. Being a Learner Senedd representative is a really important role as it enables you to:

- Give your views on all aspects of college life. Represent the views of your fellow learners and class friends. Get involved in taking forward recommendations and actions for improving aspects of college life
- Help enhance your communication, team working and organisation skills

If you are interested in becoming a part of the Learner Senedd then please contact: Andrew Jones in Student Admissions via email on a.jones2@merthyr.ac.uk



Teaching and Learning

'Merthyr College embraces the culture and ethos of OLEVI...The impact of your work and the current delegates' professionalism and enthusiasm for impacting on the learning of their students and colleagues was clearly demonstrated'. (OLEVI Quality Review)

Providing an outstanding learner experience is a strategic priority of the college and Teaching & Learning is fundamental in achieving this. The college wishes to develop a team culture of enquiry and innovation, working together to create effective and innovative approaches to Teaching and Learning. Our Teaching & Learning strategy can be seen below.

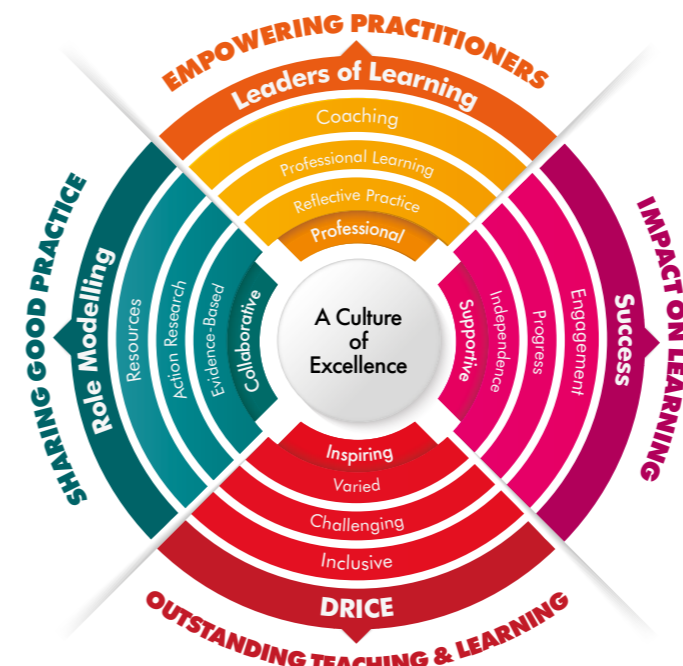
The Teaching & Learning Strategy embraces and embeds the OLEVI principles as a means of driving up standards, with improvements in Teaching and Learning leading to improvements in outcomes for learners. Based on the TLC model (Teaching & Learning, Leadership and Coaching) the strategy aims to;

- Grow exceptional practitioners
- Empower practitioners to enhance the leadership of teaching and learning
- Engage staff in a collaborative coaching ethos
- Develop an 'open door' approach to sharing best practice
- Provide learners with quality teaching in outstanding learning environments
- Enhance learners' knowledge and skills that are critical for progression or employment
- Grow a culture of excellence and innovation

The cornerstone of the Teaching & Learning Strategy is the DRICE model. Through the employment of DRICE, teachers should focus on planning and facilitating sessions that are learner-led and achieve the following;

- Deepens Thinking and Learning
- Role Models the learning process
- Impacts on learning and progress
- Challenges expectations
- Engages learners in their own learning

If you require any further information on our approach to Teaching & Learning then please contact Chris Ford (Director of Learning) at c.ford@merthyr.ac.uk



More Able and Talented

At The College Merthyr Tydfil we believe in creating an inclusive learning community that celebrates the uniqueness of all learners. The College will promote stimulating and challenging experiences through a broad and balanced curriculum that also offers quality learning activities that focus on the particular needs and talents of the learners. This will be supplemented by a bespoke tutorial and enrichment programme that offers More Able learners the opportunity to engage with a range of talks, workshops and competitions that extends their learning beyond the classroom. We are also committed to identifying and meeting the needs of these learners as early as possible in order to enable them to achieve the best possible outcomes.

As a member of NACE (National Association for Able Children in Education) we strive to provide the best possible learner experience for our More Able learners and currently work with a range of partners to enhance our provision in both a general and subject-specific context. These partnerships include;

- › The Seren Network
- › The Brilliant Club
- › The Scholars Programme
- › Dr Lesley Taylor (Stanford Ph.D.)
- › Skills Competitions Wales
- › Welsh Youth Coaching
- › Talk the Talk
- › Positively You
- › Microsoft



- › Cyber College Cymru
- › National Theatre Connections
- › Institute of the Arts Barcelona
- › Association of Hairdressers and Therapists
- › Royal College of Nursing Cadet Programme
- › Formula One in Schools UK
- › Bricklayers' Guild
- › Table Tennis Wales
- › TCMT Golf Academy
- › Big Ideas Wales

If you require any further information on our provision for More Able and Talented learners then please contact Chris Ford (Director of Learning) at c.ford@merthyr.ac.uk



Sports Academy

The college has a dedicated Sports Academy providing opportunities for learners to engage in Academy level coaching and teams in football, netball, rugby, golf, basketball and table tennis, alongside their studies. Weekly training, fitness and strength and conditioning sessions are available to all learners within our Academies, with opportunities to engage in league, cup and friendly matches. In addition, many learners within our Sporting Academies will also have the opportunity to attend selection trials to represent Welsh Colleges and national teams.

Case studies

JOSH JONES

Former Cyfarthfa pupil Josh Jones joined our Football Academy, enabling him to train and play football alongside his full-time Engineering course.

As part of our Academy, Josh had the opportunity to attend selection trials to represent Welsh Colleges and national teams. Further to these trials, he was successful in gaining a place on the both the Welsh Colleges Football squad and also the Boys Club of Wales Under 19s squad. Pictured with Josh below are past college learners and Cyfarthfa pupils Jac Hughes, Dylan Dinham, Mackenzie Thomas and Reagan Evans, who were also successful in gaining a place in the Boys Club of Wales Under 19s squad.



ELIN TYNAN

Former Y Pant Comprehensive school pupil, Elin Tynan, joined the college as an A Level learner in September 2022. Alongside her A Level studies, Elin participates in our Golf Academy, providing her with the opportunity to receive training and coaching from professional golfer and elite coach, Neil Matthews. Through being part of our Academy, Elin has had the opportunity to represent Wales.



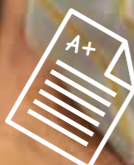
Follow our Sports Academy on Twitter @MsportsacademyC





“I felt that the whole transition period was very smooth and the college was very welcoming from day one. The tutors were excellent and provided me with full backing to help me achieve the grades I aspired to achieve.”

Joshua Flynn



Choosing the Right Course



We offer a wide range of qualifications from Entry Level through to Level 6 covering a broad spectrum of subjects, so whatever your future ambition, we have a suitable course for you.

We place great emphasis on ensuring that all learners are placed on the best course for them, taking into account their skills and qualifications achieved to date, their aspirations and their intended career path.

The college entry requirements provide a benchmark guide for this process, so that learners are aware of the level of qualifications, skills and knowledge they require to study on the course, helping to ensure that each learner is on a course maximum potential.

The subjects you choose to study may depend upon:

- › The qualifications you have already gained or your impending GCSE examination grades
- › The subjects you enjoy
- › The subjects you need to study in order to progress to your chosen higher education course or chosen career

Qualifications Explained

LEVEL E LEVEL 1

- › Entry and Level 1 qualifications give students a chance to develop a range of skills with plenty of individual support. No formal qualifications are needed to get on to this level of courses
- › Qualifications on offer include BTEC Entry Level certificates, BTEC Level 1 WBQ Foundation Post 16

LEVEL 2

- › BTEC Level 2 certificate
- › VRQ Level 2
- › GCSE Mathematics and English
- › Apprenticeships
- › WBQ Foundation Post 16

LEVEL 3

- › AS and A2
- › UAL Diploma and Extended Diploma
- › BTEC Diploma, National Foundation Diploma and Extended Diploma
- › Welsh Baccalaureate Advanced

LEVEL 4

- › Year 1 Foundation Degree

LEVEL 5

- › Year 2 Foundation Degree

LEVEL 6

- › Year 3 BA Hons Degree



Qualifications on Offer

Skills Programmes

The college offers a range of skills programmes to support learners develop their literacy, numeracy, digital, critical thinking, planning and overall personal effectiveness skills. These skills are offered across a range of Essential Skills Wales and Agored programmes and include:

- › Literacy Skills
- › Numeracy Skills
- › Pre GCSE English and Mathematics
- › GCSE English and Mathematics

AS Level & A Level

These are recognised entry qualifications for university courses. An A Level includes AS and A2 units. In your first year you can usually choose to study up to four subjects at AS Level. At the end of your first year you take an AS Level exam and gain a recognised qualification.

You can continue for a second year and achieve the full A Level.

All full time students studying A Level programmes are required to study 3 A Level subjects in addition to the Welsh Baccalaureate. We offer the opportunity for learners achieving 7 A grades or above in their GCSEs to study 4 A Level subjects in place of studying the Welsh Baccalaureate.

Vocational (e.g. BTEC, UAL, City and Guilds, WJEC)

Level 3 vocational qualifications are recognised entry qualifications and an excellent route to university. There are vocational qualifications available in a wide range of subjects. They have been designed in collaboration with industry, so they equip you with the skills and knowledge that employers are looking for. The qualifications offer a mix of theory and practice, and usually include an element of work experience. They are available at Levels 1, 2 and 3.

Vocational or A Level? What is the difference?

Both A Levels and Level 3 qualifications are recognised entry qualifications for university courses.

NVQ (National Vocational Qualification)

NVQs are work-related qualifications normally delivered and assessed in the workplace. These can form part of an Apprenticeship. A qualified assessor will observe you and assess you on the actual work you carry out in the workplace. They will test your knowledge and understanding as well as your performance.

'Skills for Further Study' and 'Access to Higher Education'

We offer Level 2 Skills for Further Study and Level 3 Access to Higher Education courses.

We offer GCSE resits in English and Mathematics and they will provide you with a chance to improve on the grades you obtained whilst at school.

Welsh Baccalaureate

The college offers the Welsh Baccalaureate Qualification (WBQ) at three levels across a range of vocational and academic areas;

- › Level 3 Advanced/BTEC WBQ Advanced
- › Level 2 BTEC/Vocational WBQ National Post 16
- › Level 1 BTEC/Vocational WBQ Foundation Post 16

Apprenticeships & Traineeships

Not sure if full-time learning is for you? Our Apprenticeship and Traineeship programmes provide the perfect opportunity for you to achieve qualifications and skills whilst in employment (Apprenticeships) or undertaking work experience (Traineeships).

How does it work?

For Traineeships and Apprenticeships, you get to spend four days a week in employment or work placement and one day at college.

Traineeships

- › Up to £50 non-means tested allowance, depending on which strand of the programme you follow
- › Develop Employability Skills
- › Wide range of Traineeships on offer with local work placements
- › Progression from this includes employment, apprenticeships or further education

What will I gain from it?

- › Earn an allowance
- › Get paid holidays
- › Receive job specific training
- › Achieve qualifications

Apprenticeships:

- › Exciting opportunities to study qualifications from Level 2 to Level 5
- › Employed status so you earn a wage whilst achieving job specific qualifications
- › Attendance at college or Training Centre once a week

We currently offer apprenticeships in:

- › Management and Team Leading
- › Business Administration
- › Retail & Customer Service
- › Construction Trades

- › Engineering
- › Mechanics
- › Warehousing & Storage
- › Hospitality (Food & Beverage)
- › Shared Apprenticeship Programme offered in Merthyr Tydfil for STEM apprenticeships through Aspire

Case Studies

SHAUN ABBOTT

Shaun, a former Mountain Ash Comprehensive School pupil, started in the college as a Skillbuild learner with an occupational aim of becoming a fully qualified mechanic. Shaun worked really hard to complete Level 1 enabling him to progress successfully on to Level 2 and then on to Level 3.

Shaun is proof that, with hard work and dedication, you can achieve your goals.

COREY WILLIAMS

Work based learning student Corey Williams represented The College Merthyr Tydfil at the Welsh National Eisteddfod at Cardiff Bay.

Corey completed a six week Welsh course at the college covering reception skills, both over the telephone and as a meet and greet receptionist.

Want to know more?

Contact our team of advisers directly
Telephone: 01685 371747 or
email: susan.type@tydfil.com

A Levels and Level 3 Vocational Courses

A Levels and Level 3 vocational courses can be used to enter higher education courses. Entry onto these courses are denoted by a UCAS Tariff. The table opposite shows UCAS points tariff for A Levels & BTECs:

How to progress into Higher Education

The Universities and Colleges Admissions Service (UCAS) uses a points system to set a value for a range of qualifications. To find out the entry requirements for the degree that you are interested in visit: www.ucas.com

University of South Wales

The college's partnership with the University of South Wales enables us to provide enhanced progression pathways to higher education, offering a wide range of university level courses here at The College Merthyr Tydfil. With over 200 learners currently enrolled on university level qualifications, the college provides high quality teaching and support, ensuring that all learners achieve their maximum potential and successfully gain the qualifications required to progress onto honours degree programmes, professional qualifications or employment.

Tariff Points	AS	A Level	BTEC Sub Diploma	BTEC 90 Credit	BTEC Diploma	BTEC Extended Diploma	UAL Extended Diploma	UAL Diploma
168	>>	>>	>>	>>	>>	D*D*D*	D	
160	>>	>>	>>	>>	>>	D*D*D		
152	>>	>>	>>	>>	>>	D*DD		
144	>>	>>	>>	>>	>>	DDD	HM	
128	>>	>>	>>	>>	>>	DDM		
120	>>	>>	>>	>>	>>	DMM	M	
112	>>	>>	>>	>>	D*D*			
104	>>	>>	>>	>>	D*D			
96	>>	>>	>>	>>	DD	MMM	HP	
84	>>	>>	>>	D*D*	>>	>>	>>	D
80	>>	>>	>>	>>	DM	MMP		
78	>>	>>	>>	D*D				
72	>>	>>	>>	DD	>>	>>	P	
64	>>	>>	>>	>>	MM	MPP		
60	>>	>>	>>	DM	>>	>>	>>	M
56	>>	A*	D*					
48	>>	A	D	MM	MP	PPP		
40	>>	B						
36	>>	>>	>>	MP	>>	>>	>>	P
32	>>	C	M	>>	PP			
30								
24	>>	D	>>	PP				
20	A							
16	B	E	P					
12	C							
10	D							
6	E							

Key to BTEC and UAL Grades

D* - Distinction (A* equivalent) D - Distinction M - Merit HM - High Merit
HP - High Pass P - Pass



A Level Provision for 2023/2024

A Level Subject	Entry Requirements
Art & Design	5 GCSE's grade A*-C Including English Language and a B in Art and Design
Business	5 GCSE's grade A*-C including English and B grade in Maths
Biology	5 GCSE's grade A-C including at least a B in both Maths and English, BB in double science or BBB in triple science
Chemistry	5 GCSE's grade A-C including at least a B in Maths (usually Higher Tier), BB in double science or BBB in triple science
Computer Science	5 GCSE's grade A*-C, B grade or above in Maths or Tech/Science based subject and C or above in English
Criminology	5 GCSE's grade A*-C including English
Design & Technology	Grade C or above in English Language and Maths. B grade in D&T at GCSE
Digital Technology	5 GCSE's grade C or above, or equivalent
Drama	Level 2 qualification in performing arts. Equivalent of four C grades at GCSE (to include one subject testing the use of English)
English Lit	5 A*-C including English Language and Maths, C and above in English
English Lit & Lang	5 A*-C including English Language and Maths, C and above in English
Engineering	5 GCSE's grade A*-C to include Mathematics, English
Further Mathematics	8 GCSE's grade A*-C including a minimum of A in Maths
Geography	5 GCSE's grade A*-C including English Language, Maths and Science GCSE Geography is desirable but not essential, however this is at the tutor's discretion. If GCSE Geography has been studied a grade C or above is required
Gov & Pol	5 GCSE's grade A*-C preferably a B grade in History or English
History	5 GCSE's grade A*-C preferably a B grade in History or English
Law	5 GCSE's grade A*-C including a B or above in GCSE English
Maths	5 GCSE's grade A*-C including a minimum of B in Maths
Medical Science	5 GCSE's grade A-C including a C in Maths English and Science
Physical Education	5 GCSE's grade A*-C including English and Maths
Physics	5 GCSE's grade A-C including at least a B in Maths (usually Higher Tier), BB in double science or BBB in triple science
Photography	5 GCSE's grade A-C including English Language
Psychology	5 GCSE's grade A*-C including grade B or above in English Language and a grade C in Maths is desirable
Religious Studies	5 GCSE's grade A*-C including English Language. Grade B or above in English would be desirable
Sociology	5 GCSE's grade A*-C including a B in English Language or Literature
Welsh	5 GCSE's grade A*-C including a Welsh C grade or above in English Language plus a B grade in full course Welsh or an A grade in short course

A Levels

Our A Level Academy offers a variety of AS and A2 Levels, all delivered by a team of professional and qualified staff. The majority of full-time A Level students follow a programme of three A Levels in addition to the WBQ.

Please note that students are required to take a minimum of three A-Level subjects.

You can also choose to widen your studies further by choosing one or two A Levels in combination with a BTEC certificate.

The entry requirements for our A Level courses are set on an individual subject basis. In general, all subjects require a **minimum** of 5 GCSE's at grade C or above, including Maths and English. Each subject then has its own additional **subject specific requirements shown opposite.**



Accountancy

- Our AAT courses are run part time and available at a Level 2,3 & 4. This will provide you the perfect foundation route into a career as an accountant or any financial role, the career options are endless.

- **ENTRY REQUIREMENTS** No formal qualifications are required, however, applicants should have basic literacy and numeracy skills.

- **AAT L2 Accounting PT**
Monday evening or Wednesday day.

- **AAT L3 Accounting PT**
Monday day or Wednesday evening.

- **AAT L4 Accounting HE PT**
Monday and Tuesday evening or Tuesday day.

PROGRESSION Many learners progress into a variety of accountancy related roles such as: Accounts payable and expenses supervisor, Assistant financial accountant, Commercial analyst, Cost accountant, Fixed asset accountant, Payments and billing manager, Payroll manager, Senior bookkeeper, Senior finance officer, Senior fund accountant, Senior insolvency administrator, Tax supervisor, VAT accountant.

Case Study

KRYSTAL AUSTIN-BENNETT

Current AAT L4 learner Krystal started her time at the college studying AAT L2 and has since completed the Level 3. She commented "I was looking to have a change in career and starting at Level 2 gave me the basic skills needed to understand bookkeeping and accountancy. I have thoroughly enjoyed learning new skills at each level and it has also been good to put the new skills that I have learnt into practice. The tutors at the college are very helpful and knowledgeable with all types of questions and always there to help outside the classroom via emails too".

Our AAT courses are covered by PLA, please see PLA page for further details.



Business and Management

Our Business and Management courses offer an excellent foundation for working in any business environment, ranging from Level 2 to Higher Education.

WJEC AS/A2 Level Business FT

ENTRY REQUIREMENTS 5 GCSE's A*-C including English Language and B grade in Mathematics.

A Level Business Studies will enable candidates to focus on the dynamic nature of the contemporary business world.

BTEC L2 Extended Certificate in Business FT

ENTRY REQUIREMENTS 4 GCSE A*-D grade.

BTEC L3 National Foundation Diploma Business FT

ENTRY REQUIREMENTS Applicants are expected to possess a minimum of 5 GCSE passes at A*-C grades or equivalent qualifications or a Level 2 in Business at a Merit grade.

By choosing Business and Travel, you will have the opportunity to work with local businesses and travel agencies, including Mark Warner Travel.

Career Opportunities

- ▶ Marketing
- ▶ HR Management
- ▶ Law
- ▶ Travel Adviser
- ▶ Air Cabin Crew

Case Study

JOSHUA FLYNN

Former Cyfarthfa High School pupil, Joshua, received outstanding vocational results, achieving a D*D*D* in his BTEC Level 3 Business Studies course. Joshua has now progressed on to the Network 75 Apprenticeship scheme to study Quantity Surveying and Commercial Management. Joshua commented "I felt that the whole transition period was very smooth and the college was very welcoming from day one. The tutors were excellent and provided me with full backing to help me achieve the grades I aspired to achieve."



New for 2023

BTEC L1 Introductory Diploma in Vocational Studies

The Level 1 Vocational Studies course is an ideal stepping stone to develop your skills to progress onto one of our subject specific Level 2 programmes at college. This course provides a number of core units including organisational skills, research skills, working with others and progression planning. Alongside these, you will also complete units in your chosen pathway subjects and literacy and numeracy.

Do you want to progress into a career in Beauty, Health and Social Care, Childcare, Business, Travel and Tourism, Sport or Public Services? If so, this course allows you to complete units in these subject areas, alongside developing your study skills and progression path.

ENTRY REQUIREMENTS There are no formal qualifications required, however, applicants should have basic literacy and numeracy skills.

PROGRESSION Successful completion of the Level 1 Vocational Studies course will enable you to progress onto a Level 2 programme at the college.



Children's Care, Play, Learning & Development

WJEC L2 Children's Care, Play, Learning and Development Core

ENTRY REQUIREMENTS At least 4 GCSE's grade A*-D including C grade in English and/or Maths and a formal interview and references. Level 1 qualification may also be considered.

WJEC L3 Children's Care, Play, Learning and Development Core

ENTRY REQUIREMENTS 5 GCSE's grade A*-C including English and Mathematics.

CACHE L2 Certificate in Supporting Teaching and Learning PT

ENTRY REQUIREMENTS Candidates should be over 16, with the academic skills to work independently at Level 2.

CACHE L3 Diploma in Supporting Teaching and Learning PT

ENTRY REQUIREMENTS Candidates should be over 16, hold a relevant Level 2 with previous experience of working in a school or college environment.

PROGRESSION These qualifications will provide you knowledge and understanding of the role and context of children's care, learning and development.

Case Study

ANWEN DAVIES

Previous Brecon learner Anwen Davies has worked exceptionally hard to reach her desired grades this academic year. Anwen has gained a limited place at the prestigious Norland College in Bath, which is only offered to 100 students per academic year.



Case Study

CALLUM THOMAS

Former learner Callum Thomas has been a student in the college for four years and has shown determination and motivation to qualify as a Level 3 practitioner. Callum has now secured a job within the childcare sector, as a deputy manager in a Flying Start setting.



By choosing to study with us you will have the opportunity to engage in industry relevant placements with local childcare providers and settings, including local primary schools. You will also have the opportunity to enhance your skills through completing some of your course modules through the medium of Welsh. Welsh is a highly sought after skill in the childcare sector and this will providing a perfect opportunity for you to add value to your cv, university and job applications and make you stand out from the crowd.

Career Opportunities

- › Teaching
- › Teaching Assistants
- › Nannies
- › Au Pair
- › Play Therapist
- › Speech and Language
- › Paediatric Nursing



Construction



Our Construction department has an excellent reputation for delivering high quality industry recognised construction courses. Our students not only benefit from our dedicated construction workshops and facilities, but we also provide excellent national and international work experience opportunities, enabling our students to leave us with a range of qualifications and skills to help them stand out from the crowd. So if you want a career in the construction industry, our courses will give you the skills and experience to build strong foundations for your future.

City & Guilds Multi-Skills Level 1 Construction Diploma

This qualification is a one-year programme for learners who wish to enter the construction industry. You will gain experience of the different skills in a variety of construction pathways including Bricklaying, Carpentry & Joinery, Painting & Decorating and Plastering. On successful completion of the programme, you will have the opportunity to progress to a Level 2 qualification, apprenticeship or further training in your chosen construction trade.

ENTRY REQUIREMENTS There are no formal entry requirements, however, during the interview you will need to demonstrate an interest in learning more about construction with a view to progress to training or work in the industry.

PROGRESSION You could progress on to study a combination of two of the following trades Brickwork, Carpentry and Joinery, Painting and Decorating or Plastering at Foundation Level 2. Alternatively, you could progress into apprenticeship training or employment in the construction industry.

City & Guilds Level 2 Foundation Diploma in Construction and the Built Environment

This qualification provides a broad introduction to construction and the built environment. It has been developed for individuals working in or intending to work, in the construction industry. This qualification will enable learners to go on to study a range of other Level 2 or 3 construction courses relevant to their trade interest area. As part of your studies you will be required to study two construction pathways from the following:

- › Brickwork & Blockwork
- › Carpentry & Wood Occupations
- › Electrotechnical Systems
- › Painting & Decorating
- › Plastering & Interior Systems

ENTRY REQUIREMENTS 4 GCSE's at grade D or above (or equivalent) including Maths and English. Or achieved the Level 1 Multi-Skills Construction Diploma with high tutor recommendation and have achieved Level 1 Essential Skills Wales (ESW) qualifications in Application of Number and Communications. You will need to demonstrate an interest in learning more about construction with a view to progressing to training or work in the industry during your interview process.

PROGRESSION You could progress to further learning in Brickwork, Carpentry and Joinery, Painting and Decorating or Plastering via our L2 Progression route. Alternatively, you could progress into apprenticeship training or employment in the construction industry.



City & Guilds Level 2 Progression in Construction.

The progression in Construction provides a continued route for learners who do not have an employer or apprenticeship. It is aimed at learner's who have achieved the L2 foundation qualification in Construction and the Built Environment. On completion, the qualification will provide learners with the knowledge to progress on to L3 Construction in one trade area which will be site based:

As part of your studies, you will be required to study one Construction pathways from the following:

- › Bricklaying
- › Site Carpentry
- › Painting and Decorating
- › Plastering

PROGRESSION You could progress to further learning in Brickwork, Carpentry and Joinery, Painting and Decorating or Plastering via L3 (Trade area) Construction. Alternatively, you could progress into apprenticeship training or employment in the Construction industry.

Career Opportunities

- › Carpenter
- › Painter
- › Plasterer
- › Bricklayer
- › Set Design
- › Civil Engineering – road developments – A465
- › Design

By studying Construction with us, you will have the opportunity to engage with local and national employers to enhance your skills and support you to progress into employment at the end of your studies. These include:

- › Tilbury Douglas
- › Morgan Sindall
- › Arc Construction
- › DE Plant
- › Future Valleys Construction



Case Study

THOMAS AMOS

Level 3 Painting & Decorating Diploma.

"I have really enjoyed the past two years studying how to become a painter & decorator and thrilled that I am now progressing onto the Level 3 Diploma, this academic year. The course has been practically challenging, given it is a trade course and the skills required, but I love how creative you can be. When I achieve a task in class, it really makes me feel like I have accomplished something and this is rewarding for me, which is one of the main reasons why I love it! The course has allowed me to stretch out of my comfort zone, meeting new people and staff too. The teaching staff have been amazing and really supportive throughout my studies. They have been role models to us all and I have enjoyed listening to their expertise and advice, which is given from their own personal past experiences. Having this opportunity has allowed me to progress into a job that I love."



Case Study

JOSHUA TURNBULL LEASK

"While studying at The College Merthyr Tydfil my experience has been very positive, and I would like to continue next year to gain my Level 3 in Site Carpentry.

The course began with studying two trades at foundation before being able to select our chosen career route. Our practical sessions are mostly reconstructing real world scenarios like fitting a kitchen with specific, and sometimes difficult requirements. I feel that this makes the practical much more meaningful and increase everyone's productivity. To further improve our learning, we have had some offsite trips, one to the NEC in Birmingham for the construction week, where up and coming technologies and materials were presented. The other trip was to a theatre set building company in Cardiff, which presented the importance of working relationships across all trades in a workshop environment."



Creative Industries

Creative Industries incorporates Performing Arts, Drama, Music, Media, Film, Photography and Art & Design. Although the courses offered are very specific there are many opportunities for cross-curricular collaboration on large-scale projects. Engagement with the community and local employers is very important and this vocational approach to project work is a huge strength within the division. Opportunities to display practical creative work are abundant and our theatre performances, live music events, film screenings and visual arts exhibitions are of a high quality, receiving excellent feedback from parents, industry professionals and the general public. There are also opportunities to take part in educational visits to galleries or theatres in the UK and abroad.

WJEC AS/A2 Level Art and Design (Art) FT

ENTRY REQUIREMENTS 5 GCSE's grades A*-C, including English Language and a B in Art and Design. You will be asked to bring examples of your artwork to your interview.

WJEC AS/A2 Level Art and Design (Photography) FT

ENTRY REQUIREMENTS 5 GCSE's at grades A*-C, including English Language. You will be asked to bring examples of your artwork to your interview.

PROGRESSION Successful applicants usually progress onto a Foundation Studies Diploma. There is also an option to apply to one of our Foundation Degrees in Photography or Art Practice, which now has a BA(Hons) top-up year. Students can also use their Art & Design A Level to build up UCAS points towards applications for university courses outside of the visual arts.

UAL L2 First Diploma Art and Design FT

ENTRY REQUIREMENTS 4 GCSE's grade D or above, applicants must show an aptitude for Art and Design. You will be asked to bring examples of your artwork to your interview.

UAL L3 Diploma Art and Design FT

ENTRY REQUIREMENTS 4 GCSE's grade C or above including Art GCSE or UAL/BTEC Level 2 in Art and Design. You will be asked to bring examples of your artwork to your interview.

UAL L3 Diploma in Creative Media Production and Technology

ENTRY REQUIREMENTS Level 2 qualification in creative media production. 4 GCSE's grade C or above (to include one subject testing the use of English). You may bring examples of any media/film work to your interview.

UAL L3 Foundation Diploma in Performing & Production Arts

ENTRY REQUIREMENTS Level 2 qualification in performing arts. Equivalent of 4 C grades at GCSE (to include one subject testing the use of English). Auditions will be required at interview.

UAL Level 3 Foundation Diploma in Music

ENTRY REQUIREMENTS Level 2 qualification in Music. Equivalent of 4 grades at GCSE (to include one subject testing the use of English). You will be asked to attend an audition as part of the entry requirements for this course.

PROGRESSION Students can progress on to Higher education courses.

By choosing to study with us, you will have the opportunity to engage with:

- › Industry relevant workshops and programmes
- › Screen Academy Wales
- › Bad Wolf Studios
- › Links with Creative Merthyr
- › Annual Art and Photography Exhibitions
- › Regular performances and productions
- › Green Man Festival Work Placements
- › National Theatre Connections Festival
- › Sherman Theatre partnership
- › Institute of the Arts Barcelona
- › Community Music Wales

Case Study

CONNOR BAILEY

"I have recently left Merthyr college to start my Higher education journey. During the two-year course, I studied the full-time UAL L3 Art and Design. From day one of the course I felt happy and secure in my decision to study a creative vocational programme with the view of pursuing a career in the creative industries sector.

I was able to explore my passions in art and learn the digital skills essential for graphic design. The projects were always exciting and interesting to work through. To help me get through, I could always count on my lecturers to assist me in any way they could, whether it was with my studies or personal circumstances.

Now, I am currently in my first year as an undergraduate at Bath Spa University studying Graphic Communications, and I hope to pursue graphics as a career in the future."



Career Opportunities

- › Artist
- › Musician
- › Graphic Designer
- › Media – TV presenter
- › Film
- › Studio production

Case Study

HOLLIE POWLES

"Studying Art & Design in Merthyr college was a great experience and a fantastic way to further my art skills. I enjoyed exploring different creative pathways that I have never tried before such as graphic design, photography and ceramics. Even though my main strength is painting and drawing, I thoroughly enjoyed working with new techniques and processes.

The tutors in the art department are all very supportive and encouraged me to get out of my comfort zone and develop my artistic style. I am now studying a Fine Art degree at Swansea University and would not have done it without the tutor's support. When I have completed my degree, I hope to progress onto a career in tattooing."



Digital Industries

(Computing, ICT, Games Design & Esports)

Our digital industry courses offer an excellent foundation for you to gain the knowledge, understanding and skills to help you increase your chances of employment, allowing you the opportunity to specialise in different areas, such as Games Design, Systems Security, Computer Security and Forensics, Mobile App design, Digital animation, Streaming, Coaching, Video editing, Website Development or programming.

WJEC AS/A2 Level Computer Science FT

ENTRY REQUIREMENTS 5 GCSEs A*-C, preferably Computer Science and/or Mathematics at grade B or above. An interest in programming, technology and STEM subjects would be beneficial.

WJEC AS/A2 Digital Technology

ENTRY REQUIREMENTS 5 GCSEs A*-C, preferably including ICT, Computer Science or Digital Technology GCSE. An interest in games development, technology and artificial intelligence would be beneficial.

BTEC L1/L2 First Ext Certificate Information and Creative Technology FT

ENTRY REQUIREMENTS LEVEL 1 2 GCSE grade A*-F Applicants are required to have basic skills in Literacy and Numeracy and an interest in IT, Technology, Design and Computing.

ENTRY REQUIREMENTS LEVEL 2 4 GCSE grade A*-D or Level 1 IT. Applicants are required to have basic skills in Literacy and Numeracy and an interest in IT, Technology, Design and Computing.

BTEC Level 3 National Foundation Diploma in Information Technology FT/EICTFT

ENTRY REQUIREMENTS 5 GCSE's grade C or above, or equivalent. Also, an interest in IT, Digital Technology, Computing, Cyber, Programming, Web and Games Design.

UAL L3 in Creative Computing and Games Design FT

ENTRY REQUIREMENTS 5 GCSE's grade A*-C or equivalent. Also, an interest in Games Design, Graphics, Animation, Audio and Programming.

BTEC L3 National Foundation Diploma in Esports

ENTRY REQUIREMENTS 5 GCSE's grade C or above, or equivalent. Also, an interest in Competitive Gaming and the industry surrounding it, including areas such as (but not limited to); Competitive Analysis, Branding, Video Production, Games Design, Events Management, Health & Fitness and Shout-casting.

PROGRESSION Successfully completing these courses will provide you progression into employment or a Higher Education institution to study courses in various digital industries, or the HND which we offer here at the college.



Case Study



YUKIKA OZAKI-GARRETT

Former Gwernyfed High School learner Yukika achieved an overall Distinction in her UAL L3 in Creative Computing and Games Design course. Her personal tutor commented "Yuki is highly creative and a logically minded learner."

She demonstrated a unique flare for Games Design and her passion and enthusiasm shone throughout the 2 years on the course". Yukika has gained a place at Staffordshire University to study Games Design and Programming.

New for 2022 – partnership with Cyber College Cymru

The college is working in partnership with Cyber College Cymru to provide opportunities for learners to engage in an industry led programme where you will benefit from working with key employers, including Welsh Water, Bridewell, Admiral, Fujitsu and Thales through mentoring, guest lectures, work placements and workshops.

The College Merthyr Tydfil has also been recognised as a CyberFirst School College



Career Opportunities

- › Programmer
- › Robotics
- › Artificial Intelligence
- › 2D/3D Games Designer
- › Cyber Security
- › Computer Analyst
- › Systems Design
- › Graphic Designer
- › Content Creator



Electrical Installation

The electrical industry is a £23.6bn market so there is always a demand for electricians in the UK. Our Level 1&2 qualifications are ideal for you if you are interested in a career in the electrical installations industry. It allows you to learn, develop and practice the skills required for employment and career progression.

L1 Diploma Electrical Installation FT

ENTRY REQUIREMENTS 3 GCSE's grade D or above (including a D grade in Maths) or a suitable Level 1 Electrical qualification. You must be able to demonstrate 90% attendance during your course of study.

L2 Progression in Building Services Engineering - Electrical Installation FT

ENTRY REQUIREMENTS 4 GCSE's grade C or above (including both English and Maths) or a suitable Level 1 Electrical qualification. You must be able to demonstrate 90% attendance during your course of study.

PROGRESSION Although this qualification does not aim to make candidates fully qualified electricians it enables learners to develop and practice the skills required for a career in electrical installations or electrical engineering. It is suitable for those who want to progress onto an Electrotechnical Apprenticeship programme.



Case Study

JAY DAVIES

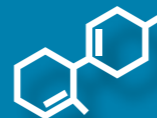
Former Cyfathfa High School pupil and Silver Medal Winner of Skills Competition Wales Jay Davies, has returned to study Level 2 Electrical Installation after successfully passing Level 1. Commenting on his time at college, Jay stated

"My time at college has been very successful. I chose Electrical Installation to help improve my chances of gaining an apprenticeship in the Electrical Industry. Gaining hands on experience in the workshop, helped me boost my confidence and skills to work within the Electrical Industry. My tutors encouraged me to compete in the Skills Competition Wales for Electrical Installation which I Won Silver Medal. My plans for the next few years is to gain employment as an Electrical Apprentice with a local Contractor, and hopefully become a fully qualified electrician."





Engineering



Why choose to study Engineering with us?

We have fantastic facilities, excellent partnerships and apprenticeship opportunities with local organisations e.g. General Dynamics. Established partnership with the University of South Wales and opportunities to engage in European work experience placements. Our advanced manufacturing courses encompass exciting and modern technologies in robotics, green energy and Inspection systems. Combine this with intuitive CAD/CAM procedures and expressive project work and you will receive hands-on engineering experience.

BTEC L3 Foundation Award in Advanced Manufacturing Engineering FT A Level

ENTRY REQUIREMENTS 5 GCSE's grade A*-C to include Mathematics, English and successful interview demonstrating motivation and commitment to the programme.

EAL L2 Diploma in Engineering and Manufacturing Technology FT

ENTRY REQUIREMENTS Four GCSE's grade D or above (including Mathematics, English and Science), or an appropriate engineering qualification.

BTEC L3 Certificate in Advanced Manufacturing Engineering/Enhanced

ENTRY REQUIREMENTS 5 GCSE's grade A*-C to include Mathematics, English and successful interview demonstrating motivation and commitment to the programme.

Our AS/A Level Design & Technology specification provides a unique opportunity in the curriculum for learners to identify and solve real problems by designing and making products or systems in a variety of materials. A balanced skill development will enable learners to express themselves using methods and techniques found in the design industry. Learners also benefit from a wealth of specialist equipment that assists in creating an environment where blue sky thinking meets down to earth reality.

WJEC AS Level Design & Technology – (Product Design) FT

ENTRY REQUIREMENTS GCSE C grade or above in English Language and Maths, and the minimum of a B grade in Design & Technology along with preferable combinations of or at least Product Design, Art or Engineering again at C grade or higher.

PROGRESSION This qualification provides a suitable foundation for the study of Design & Technology or a related area through a range of higher education courses or direct entry into employment. Typical career paths may include Product Design, Market Research, Architecture, Animation, Set Design, Automotive industry and many forms of Engineering Design.

Case Study

KIAN COURT

Former Cyfarthfa High School pupil Kian Court. Started on the Level 2 Diploma course at the college in 2020, achieving an overall Distinction to progress onto the Level 3 Enhanced Engineering program, during which, demonstrated a particular interest in Engineering Computer Aided Design. Kian achieved an overall distinction at the end of the first year of the Level 3 and secured an Engineering Computer Aided Design apprenticeship with Advanced Furniture. Kian is now studying part time at the college to complete the Level 3 Diploma in Engineering. Kian stated, "I really enjoy studying at the college. My subject tutors believed in me from the start. They have been supportive and encouraging and helped me meet the goals I set myself. I have gained a wealth of understanding and experience throughout a range of engineering disciplines and this has been invaluable when working in industry. I hope to complete my engineering apprenticeship to become a fully qualified engineer and continue in the career that I love".



Through studying Engineering with us, you will have the opportunity to engage in a range of employer engagement projects, trips and visits, providing the perfect opportunity for you to enhance your skills and giving you that added extra to support your progression into employment, university or an apprenticeship. Key employers, include, Panasonic, Royal Academy of Engineering, Nexperia (formerly Newport Wafer Fab), EESW STEM Cymru, KUKA Robotics, University of South Wales Rocket Society, F1 in Schools and many more!

Career Opportunities

All types of Engineering

- › Aerospace
- › Mechanical
- › Electrical
- › Chemical
- › Civil





ESOL

English for Speakers of Other Languages (ESOL) is taught at The College, offering learners the chance to begin or improve their English. Our ESOL courses focus on everyday English, communication, numeracy, computer skills, vocational and employability skills. Many of our learners progress to full-time or part-time courses at the college, including Business, Childcare and Sport. Some have progressed onto Foundation Degrees including Business & Photography as well as studying at University. As part of the global market our students are employed across the world, but some chose to reinvest their newly acquired skills and establish their own businesses in the Merthyr Tydfil Borough. ESOL also gives learners confidence to gain employment in a range of sectors, for example, as translators, teaching assistants, the police and supervisors in local factories.

English for Speakers of Other Languages (ESOL) is taught at The College, offering learners the chance to begin or improve their English and progress to a Level 2 standard

ENTRY REQUIREMENTS No formal entry requirements, applicants are selected on interview.

PROGRESSION Some have progressed onto Foundation Degrees including Business & Photography as well as studying at University.

Many of our learners progress to full-time or part-time courses at the college, including Business, Childcare and Sport. Some have progressed onto Foundation Degrees including Business & Photography as well as studying at University.

Case Study

PATRYCJA STELMACH

Current ESOL learner Patrycja Stelmach originally came from Poland but has lived in Merthyr Tydfil with her children for many years. Patrycja completed her Entry 3 qualification in 2021-2022 and continues her studies this year on Level 1 and GCSE Maths. Patrycja is hoping that her English qualifications will benefit her towards owning her own photography business one day and provide a good life for her family.



“At The College Merthyr Tydfil we believe in creating an inclusive learning community that celebrates the uniqueness of all learners.”

Foundation Learning

ENTRY REQUIREMENTS All of our Foundation Learning courses require an interview with the teaching staff before acceptance onto the course. Progression between levels is not automatic.

- › Life Skills
- › Skills Development
- › Entry 3 to Vocational Studies
- › NEW Supported Internship

PROGRESSION Following the successful completion of the course. You may be able to progress to a Level 1 course in other areas, or choose to move into work.

Case Study

BEN LEWIS

"My name is Ben Lewis, and I have been a student at The College Merthyr Tydfil since 2018.

I completed my Skills Development course last year, where I was able to develop my skills and confidence to move on to a new course.

This year I have started a Supported Internship course at Prince Charles Hospital, I have had the opportunity to try different job roles at the hospital, which I have really enjoyed.

My goal is to get a job at the hospital once I have completed my course, as I would have learnt the job while studying. The college is really helping me work towards getting paid employment in a job I enjoy."



Hairdressing & Beauty

From Level 1 through to Level 3, our hairdressing and beauty courses provide you with the opportunity to further develop your skills and enhance your career and employment prospects in the hair and beauty industry. All of our courses equip learners for the world of work by providing the opportunity for them to work within a realistic working environment whereby they are required to develop key employability skills.

VTCT L1 Diploma Hairdressing FT

VTCT L2 Diploma Hairdressing FT

VTCT L3 Diploma Hairdressing FT

VTCT L3 Certificate Barbering PT

VTCT L2 Diploma in Beauty Specialist Techniques FT

VTCT L3 Diploma in Beauty Therapy Treatments FT

ENTRY REQUIREMENTS Applicants are selected on interview. Good literacy skills are required. L2 or equivalent needed to progress to L3. There is no automatic progression between levels.

PROGRESSION These qualifications may lead to apprenticeships or employment in the industry.

Case Studies

SAMANTHA RICHARDS

Mature learner Samantha Richards completed her Level 2 Beauty Specialist Techniques in June 2022. During her first year of studies, she displayed impressive skills and passed every exam to a very high standard. Samantha has now enrolled on the Level 3 programme and continues her dedication towards a career in the beauty industry.



ANA HONARATO

Mature learner Ana successfully completed both Level 2 and 3 hairdressing course and has now progressed onto employment in Ladybirds Hair Centre in Merthyr town.

Ana joined the course to fulfil her dream of becoming a qualified Hair stylist and enhance her previous skills she developed living in Portugal. Ana presented excellent skills throughout her course and competed in the UK skills competition to achieve a place in the regional heat. As well as the vocational skills Ana developed, she also improved her English language skills during her time on the course.

Career Opportunities

- › Hairdresser
- › Beautician
- › Customer Service role
- › Nail technician
- › Barbering



Health & Social Care

Our Health and Care courses offer an excellent route into working within an education or health and social care setting alongside the opportunity to progress to HE courses.

City and Guilds/WJEC L2 Health and Social Care Core Principles and Contexts

ENTRY REQUIREMENTS At least 4 GCSE's grade A*-D including C grade in English language and or/C in Maths and Science and a formal interview.

City and Guilds/WJEC L3 Certificate Health and Social Care

ENTRY REQUIREMENTS Entry onto this course is by interview and requires at least five GCSE's grade A*-C including Mathematics, English and Science.

PROGRESSION Learners could progress to higher education courses in areas including: Midwifery, Police studies, Speech and language therapy, Psychology, Occupational health, Social work and Nursing.

Case Study

ERNESTINA BERKOH

Ernestina Berkoh, former Afon Taf High School learner began her Health and Social care journey on Level 2. She then progressed to Level 3, achieving DDM and successfully secured a place to study Midwifery in London South Bank University.



Case Study

GRACE DAVIES

Since completing the Level 3 Extended Diploma in Health and Social Care, Grace received an incredible D*D*D* and secured a position on the Operating Department Practice (ODP) Degree course at the University of South Wales.



The College Merthyr Tydfil has joined in partnership with The Royal College of Nursing to be the first college of further education to offer the RCN Prince of Wales Nursing Cadet scheme to college learners wishing to pursue a career in nursing or other professions in the NHS.

The scheme, aims to inspire young people, particularly those from disadvantages backgrounds, to work in health and care by giving them access to opportunities for academic study and hands-on experience in the nursing and health sector.

Career Opportunities

- Social Worker
- Nursing (Adult, Mental Health and Paediatric)
- Midwifery
- Paramedic
- Operating Department Practitioner
- Psychology
- Occupational Therapist
- Police
- Probation officer
- Criminology
- Dental Nursing



Humanities, Social Sciences & Languages

Our Humanities and Languages division provides a wide range of courses, including History, Geography, English Language and Literature and Welsh.

WJEC AS/A2 Level Law

ENTRY REQUIREMENTS 5 GCSE's grade A*-C, including a B grade or above in GCSE English.

WJEC AS/A2 Level English Literature

ENTRY REQUIREMENTS 5 A*-C including English Language and Maths, C and above in English.

WJEC AS/A2 Level English Language & Literature

ENTRY REQUIREMENTS 5 A*-C including English Language and Maths, C and above in English.

WJEC AS/A2 Level Criminology

ENTRY REQUIREMENTS You will require 5 GCSE's grade A*-C including English.

WJEC AS/A2 Level History

ENTRY REQUIREMENTS A minimum of 5 GCSE's grade A*-C, with preferably a B grade in History or English.

WJEC AS/A2 Level Religious Studies

ENTRY REQUIREMENTS 5 GCSE's grade A*-C including English Language. A grade B or above in English Language would be highly desirable.

WJEC AS/A2 Level Cymraeg Ail Iaith

ENTRY REQUIREMENTS 5 GCSE's grade A*-C including Welsh C grade or above in English Language plus a B grade in GCSE full course Welsh or an A grade in short course Welsh.

WJEC AS/A2 Level Psychology

ENTRY REQUIREMENTS 5 GCSE's at grades A*-C including a grade B or above in English Language or Literature and a grade C in Mathematics is desirable.



WJEC AS/A2 Level Geography

ENTRY REQUIREMENTS 5 GCSE's grade A*-C including English Language, Maths and Science. GCSE Geography is desirable but not essential however, this is at the discretion of the tutor. If GCSE Geography has been studied at GCSE a C grade or above is required.

WJEC AS/A2 Level Government and Politics

ENTRY REQUIREMENTS A minimum of 5 GCSE's grade A*-C with a B grade in History or English.

WJEC AS/A2 Level Sociology

ENTRY REQUIREMENTS 5 GCSE's grade A*-C including a grade B or above in English Language or English Literature. You do not need to have taken Sociology at GCSE.

PROGRESSION Successful completing of any of these A Levels subjects can help you progress onto a wide variety of university level courses.

Case Studies

JOANNA FOLEY

Former Blessed Carlos Acutis pupil and Humanities learner Joanna Foley, achieved a B in Sociology and 2 As in Religious Studies and Psychology. Joanna has successfully gained a place at Swansea University to study Child Nursing, commenting "Despite a difficult two years I am overwhelmed and extremely grateful for the support I have received from the college, especially from my course tutors who continued to stay enthusiastic and encouraged me, when at times I doubted myself. I am excited to be starting a Child Nursing Degree at Swansea University in September and I look forward to what the future holds."



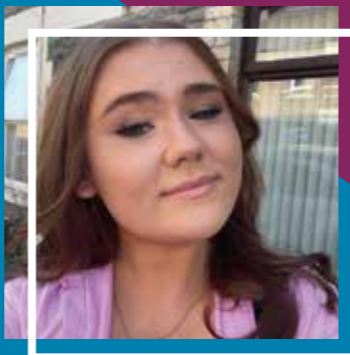
HOLLIE MORGAN

Past Idris Davies pupil achieved an A in History, C in Law and 2 Bs in Sociology and Psychology. Hollie has successfully gained a place at

Newcastle University to study Law, she commented "Since joining the college in September 2020, I have found it to be a welcoming, inclusive and nurturing environment to learn in. The staff at the college have provided both academic and well-being support to all learners. I'm now looking forward to progressing on to study Law at university."

MEGAN HARRIMAN

Past A Level Law student Megan Harriman, studied at The College Merthyr Tydfil during 2017-2019. She successfully achieved an A grade and has since graduated with an undergraduate LLB Law Degree from Cardiff University. Megan paid tribute to her Law tutor "My teacher, Lowri Bracey, was outstanding at supporting students to achieve above and beyond their expectations whilst making classes enjoyable and fun. Myself and my classmates were offered a range of interesting, engaging and entertaining opportunities to expand our knowledge and understanding of the legal profession. Participation in Smart Law's Mock Trial Competition in my A2 year was the catalyst in my decision to pursue a career as a Barrister. I highly recommend undertaking this A Level at The College Merthyr Tydfil – you will not be disappointed!"



Career Opportunities

- › Behavioural Psychologist
- › Forensic Psychologist
- › Teaching
- › Probation Officer
- › Police Officer
- › Criminologist
- › Museum Curator
- › Journalist
- › Social Research Officer
- › Copywriter

Motor Vehicle Technology

The IMI is the professional body for people employed or seeking employment in the motor industry. As the leading awarding body for the retail motor industry, the IMI offers a range of Vocationally Related Qualifications (VRQs), Vocationally Competent Qualifications (VCQs) or Diplomas. These courses provide the widest range of technical knowledge, which is necessary to become a skilled Motor Vehicle Technician, Master Technician or allow progression to higher education. There is a qualification suited to all levels of applicants from Entry Level right through to Level 3 Technician courses.

CG L1 Diploma Vehicle Systems FT

ENTRY REQUIREMENTS GCSE grades D-F in English, Mathematics and a Science based subject.

IMIAL L2 Diploma in Light Vehicle Maintenance and Repair Principles FT

ENTRY REQUIREMENTS 4 GCSE grade A*-D or above preferably in Mathematics, English and Science or Level 1 Motor Vehicle qualification.

IMIAL L2 Diploma in Vehicle Fitting Principles

ENTRY REQUIREMENTS Three GCSE's grade C or above preferably in Mathematics, English and Science or Level 1 Motor Vehicle qualification.



IMIAL L3 Diploma in Light Vehicle Maintenance and Repair Principles FT

ENTRY REQUIREMENTS Successful completion of an appropriate Level 2 qualification in Vehicle Technology.

PROGRESSION Learners may progress into apprenticeship or full-time employment.

As a division we are continuing to build our relationship with Aston Martin and other leading sectors and suppliers within the motor vehicle industry. Opportunities will arise for learners who are interested in obtaining additional qualifications in Electrical and Hybrid Vehicle courses.

Career Opportunities

- › Motor Vehicle Technician
- › Electric Vehicle Technologist
- › Motor Vehicle Engineer
- › Hybrid Technician



Science & Mathematics

An A Level or BTEC qualification in Science, Technology, Engineering or Mathematics will provide you with a stepping stone on to many different career paths. There are countless opportunities in many fields, all of which make a positive difference to people's lives.

WJEC AS/A2 Level Biology

ENTRY REQUIREMENTS Minimum of 5 GCSE's grade A-C including at least a B grade in both Mathematics and English, BB in double award science or BBB triple science.

WJEC AS/A2 Level Chemistry

ENTRY REQUIREMENTS Minimum of 5 GCSE's grade A-C including at least a B grade in Mathematics (usually Higher Tier), BB in double award science or BBB triple science.

WJEC AS/A2 Level Physics

ENTRY REQUIREMENTS Minimum of 5 GCSE's grade A-C including at least a B grade in Mathematics (usually Higher Tier), BB in double award science or BBB triple science.

WJEC AS/A2 Level Mathematics

ENTRY REQUIREMENTS Minimum of 5 A*-C grades including a minimum of an B in GCSE Mathematics.

WJEC AS/A2 Level Further Mathematics

ENTRY REQUIREMENTS Minimum of 8 A*-C grade including a minimum of an A in GCSE Mathematics.

WJEC AS/A2 Level Certificate in Medical Science

ENTRY REQUIREMENTS Minimum of 5 GCSE's grade A-C, including at least a C in Mathematics, English and Science.

PROGRESSION Successful completing of any of these A Levels subjects can help you progress onto a wide variety of university level courses.

Case Studies

IEUAN CHAMBERLAIN

Former Afon Taf pupil achieved an A in Further Maths and 2 A*s in Computer Science and Physics. Ieuan has successfully achieved the results he needs to progress on to study Physics in University and commented "I have thoroughly enjoyed my time studying A Levels at The College Merthyr Tydfil. Over the last 2 years I have been supported by staff both in and outside of the classroom, especially throughout exam season. I now have the grades I need to start a degree and subsequent career in Physics."



ERIN MITCHELL

Passed Brecon High School learner Erin Mitchell, achieved an outstanding A* in Biology, A in Chemistry and A in History. Commenting on her experience at college, Erin stated "From writing my personal statement to the interview

process for veterinary medicine, I have received endless help from the college. I'm especially grateful to Carolyn who has supported me every step of the way. My tutors have always gone above and beyond to assist me with my studies, I couldn't be happier!" Erin is now studying Veterinary Medicine at Nottingham University.



BTEC L3 National Foundation Diploma in Applied Science Yr1 FT

ENTRY REQUIREMENTS 5 GCSEs at grade C or above including at least a C in Science (or a distinction in Level 2 Diploma in Applied Science) and a C in both English and Mathematics.

PROGRESSION The applied sciences offer a wide variety of careers, such as: Forensic scientist, Physiotherapy, Nursing, Social work, Drug researcher, Medical physics technician, Science technician, Sport, and many more. Your BTEC will sharpen your skills for employment or further study.

Career Opportunities

- › Scientist
- › Pharmacist
- › Bio-chemist
- › Vet
- › Quantity Surveyor
- › Doctor
- › Forensic investigation and analysis
- › Civil/Mechanical Engineering



Sport

The sports sector has been growing for many years and the rate of growth is as high as ever. Jobs exist in coaching, administration and management, fitness advice and Sports Science. Our comprehensive range of courses combined with our fantastic reputation for sporting excellence and our commitment to providing outstanding sporting opportunities will ensure that you receive the best possible sporting education with us.

BTEC L2 First Extended Certificate in Sport FT

ENTRY REQUIREMENTS 4 GCSE's grade A*-D are desirable.

BTEC L3 Foundation Diploma in Sports Coaching & Development

ENTRY REQUIREMENTS Interviews required, Minimum of 5 GCSE's grade A*-C.

BTEC Level 3 National Extended Certificate in Sport and Exercise Science A Level

ENTRY REQUIREMENTS Minimum of 5 GCSE's grade A*-C including Maths and English.

L2 Fitness Instructor PT

ENTRY REQUIREMENTS All applicants must be aged 19 and over, with Gym Experience and a general interest in Exercise and Fitness.

L3 Personal Trainer PT

ENTRY REQUIREMENTS Applicants need to have completed a L2 Fitness Instructor course, and be aged 19 and over.

PROGRESSION These courses provide the knowledge, understanding and skills for students wishing to study Sports related Foundation degrees or degrees, or those seeking full time employment in the Sports sector.

Our Fitness Instructor and Personal Trainer courses are covered by PLA, please see PLA page for further details.

Career Opportunities

- › Sports Coaching
- › Fitness Instructor



Setup

Working in partnership with Active Merthyr Tydfil, the programme provides a unique and effective coach education and training programme. Learners can achieve their academic aspirations, helping them to progress successfully into employment, an apprenticeship or higher-level study in the field of Sport and Active Leisure.

The programme, which is the first of its kind in the local region, provides a brand new 'employability' strand to the college's existing BTEC Level 3 Sports Coaching course. It provides our learners with the added value and support they require to help them stand out from the crowd and secure future employment or university places.

Our three key strands:

1. Industry Awareness – Offering an insight into how the Sport and Active Leisure Industry works, and the importance of government led initiatives to shape their career.
2. Additional Qualifications – providing learners with the opportunity gain industry specific qualifications to start them on their journey to a lifelong career in the Sport and Active Leisure Industry.
3. Vocational Placement - Providing high quality placements for learners to develop skills learned and gain invaluable industry experience.

The programme places an emphasis on learner's awareness and understanding of the sports industry and sector through lectures, guest talks, visits, placements and workshops.

Our learners will have the opportunity to undertake high quality community-based placements through Active Merthyr Tydfil's network of providers, giving them the chance to put into practice, the theory, knowledge, and skills they are gaining in the classroom, whilst at the same time broadening their understanding of the careers available in this sector.

SETUP learners will be working with a variety of organisations which will allow them to not only gain qualifications and experience, but to help shape their futures. These include Active Merthyr, local primary and secondary schools, community sport groups, local gyms and National Governing Bodies.

Learners will also have the opportunity to undertake additional qualifications to complement and add to their BTEC Level 3 qualification, including Sports Leaders, First Aid, Safeguarding, Disability Inclusion Training, Physical Literacy, FAW Leaders, WRU Tag Leaders and many more.

Case Study

ERIN MCNULTY

Former Blessed Carlos Acutis High School pupil Erin received outstanding vocational results, achieving a Distinction in her BTEC L3 National Foundation Diploma Sports Coaching and Development course. "What I enjoy most about my course is the opportunities it has provided me for future employment. I have completed a variety of extra qualifications such as First Aid and different Sport Coaching Awards. I would say the new SETUP program that is involved with my course at the college has helped me gain a lot of self-confidence, as well as placements and experience."



Public Services and Outdoor Adventure

These courses are designed for students who wish to pursue a career in the uniformed services. They provide the skills and knowledge relevant to employment in the Police, Fire, Prison and Armed Services. There will be a good variety of activities and experiences provided by the Police, Army, Navy, RAF, Fire Service and Youth Service. These activities will give you a better understanding of the work they do and what it would be like to be a part of their organisation. You will also have access to The University of South Wales Hydra Minerva Suite to experience managing major incidents.

BTEC L2 Diploma in Preparation for Public Services

ENTRY REQUIREMENTS Students must have a desire to work in the public services. 4 GCSE's grade A*-D are desirable.

BTEC L3 National Foundation Diploma in Uniformed Protective Services FT

ENTRY REQUIREMENTS Entry is by interview: Minimum of 5 GCSE's grade A*-C.

PROGRESSION The courses provide the knowledge, understanding and skills for students wishing to enter a career in the public services or armed forces. Many students successfully progress on to university to study Criminology, Public Services, Youth Work or Police Studies or progress directly into the Uniformed Public Services.

Case Study

ELLA EVANS

Ella Evans achieved a distinction in her BTEC L3 National Foundation Diploma in Uniformed Protective Services course. Commenting on her experience, Ella stated "I have really enjoyed studying Public Services over the last two years. Each topic that I have studied has interested me, especially the outdoor unit. The support I have received from the college has really helped me achieve my goals. I look forward to completing my final year of studies."

Career Opportunities

Uniformed Public Services, including:

- Police
- Fire Service
- Armed Forces
- Outdoor Instructor

Case Study

MACIEJ ZATORSKI

Former Blessed Carlos Acutis pupil Maciej Zatorski scooped up a triple distinction star in Public Services. Maciej has now progressed on to study Professional Policing at the University of South Wales.

Travel & Tourism

Want to travel the world and be a part of a vibrant exciting industry? Travel and Tourism is one of the fastest growing sectors in the UK and abroad, with this industry offering you exciting and fulfilling career opportunities.

BTEC L2 Extended Certificate in Travel and Tourism FT

ENTRY REQUIREMENTS 4 GCSE A*-D grade.

BTEC L3 National Foundation Diploma Travel and Tourism FT

ENTRY REQUIREMENTS Applicants are expected to possess a minimum of 5 GCSE passes at A*-C grades including English Language and Maths or equivalent.

PROGRESSION Successful completion of these courses will enable you to progress onto the colleges Foundation Degree in Business or a travel related degree at another Higher Education institution or directly into employment in the travel, hospitality or leisure industry.

Case Study

ETHAN SCRIVEN

Former Pen-Y-Dre pupil Ethan Scriven achieved a triple distinction star in Travel and Tourism. Commenting on his experience, Ethan stated "I am overwhelmed by the support I have had since studying at the college. Any worries or issues I have, a member of staff is always on hand to offer advice and motivate me to develop my career. Since completing my course, I have now secured a place at University of Wales Trinity St David to study Management of Tourism".

Career Opportunities

- Travel Agent
- Travel Adviser
- Cabin Crew
- Hospitality and Events Co-ordinator



Access to HE

- Access courses are designed for those with life experience, which means they are usually suitable for those over 19 years of age.

○ Agored L2 Diploma in Skills for Further Study FT

- **ENTRY REQUIREMENTS** No formal qualifications are required.
- All prospective students are interviewed and assessed prior to being offered a place.

○ Agored L3 Access to Higher Education Diploma Healthcare & Nursing FT

- **ENTRY REQUIREMENTS** There are no formal entry requirements, we give full individual and careful consideration to every application. We also expect to see good interpersonal skills, commitment to the area of study and enthusiasm and understanding of your chosen career route.

- **PROGRESSION** Successful completion of these courses will enable learners to progress successfully on to a relevant degree course and then into a career such as: Nursing, Midwifery, Operating Department Practitioner, Social Work, Occupational Health, Podiatry, Radiography.

○ Agored L3 Access to Higher Education Diploma Social Sciences FT

- **ENTRY REQUIREMENTS** There are no formal entry requirements, all prospective students are interviewed and assessed prior to being offered a place.

- **PROGRESSION** On successfully completing the course, students achieve the Access to HE Diploma qualification. This is a nationally recognised qualification that is accepted for entry into Higher Education courses.

Case Studies

DYLAN YOUNG MURRAY

Through hard work and determination Dylan achieved 45 distinctions (the maximum number of distinctions possible). As a result of this incredible achievement, Dylan has progressed to study at Swansea University to study BSc (Hons) Paramedic Science.



JOSEPH GOUGH

Mature learner Joseph Gough achieved an incredible 39 distinctions in his Access to Humanities course. Joe returned to education having not studied any A Levels however, to achieve his goals of getting into university he would attend college during his days off to make use of college facilities.

Joe has successfully gained a place at Cardiff University to study Journalism, Communication and Politics.

HE Courses

The College Merthyr Tydfil has a unique partnership with the University of South Wales to provide a comprehensive range of Higher Education courses on your doorstep! This ground breaking initiative provides you with the opportunity to study at your local College Merthyr Tydfil and gain a qualification awarded by the University of South Wales.

Foundation Degree Art Practice FT

ENTRY REQUIREMENTS If you can show portfolio evidence of an interest in art or other relevant skills or prior learning, you will not require formal qualifications but will be invited to attend an interview.

BA Hons Degree Art Practice FT

ENTRY REQUIREMENTS Completion of Foundation Degree or completion to Level 5 in Art or similar discipline.

Foundation Degree Business Management FT/PT

ENTRY REQUIREMENTS All learners under 21 must obtain a Level 3 BTEC qualifications or two A Levels. 21 and over will be subject to interview.

BA (Hons) Degree Business Management FT/PT

ENTRY REQUIREMENTS Achieved an FD but not necessarily in Business.

Foundation Degree Psychology FT

ENTRY REQUIREMENTS You will normally have to have one of the following: 1. BTEC Vocational qualification at Level 3 in an appropriate area 2. At least an A Level pass in an appropriate area 3. An alternative Level 3 qualification in an appropriate area or 4.

HND in Computing FT

ENTRY REQUIREMENTS A BTEC National Diploma in a relevant subject or two Advanced Level subjects, at least one in a relevant subject Students should also have at least four GCSE's including Mathematics at grade C and above.

Mature students are welcome on the course, we consider accreditation of prior learning, work-based learning and candidates career aspirations.

Foundation Degree in Esports FT

ENTRY REQUIREMENTS A BTEC National Extended Diploma in a relevant subject or two Advanced Level subjects, at least one in a relevant subject. Mature students are welcome on the course, we consider accreditation of prior learning, work-based learning and candidates career aspirations.

Professional Graduate Certificate in Education (PGCE) PT

ENTRY REQUIREMENTS Available for both graduates and non-graduates. Maths and English Language GCSE grade C or above are desirable. DBS check required.

Please visit our website for further information.

University of
South Wales
Prifysgol
De Cymru

The College Merthyr Tydfil is
part of the University of South
Wales Group
Y Coleg Merthyr Tudful rhan
o Grŵp Prifysgol De Cymru

Case Studies

CERYS-MARIE RYAN

Current learner Cerys-Marie Ryan started in the college as a Travel and Tourism learner. Cerys worked extremely hard to complete the course and progressed on to our Foundation Degree Business, graduating with an overall distinction.

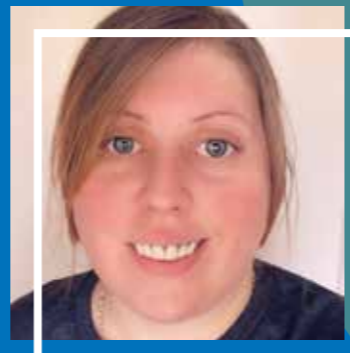
Cerys commented "I am currently studying towards my BA Hons in Business Management at the college. Studying HE is challenging but also rewarding, as I am able to complete my studies and sustain a work/life balance. The tutors and staff are really supportive and are always available to provide advice and guidance when needed. Through hard work and dedication, I have been fortunate enough to have the opportunity to work within the Students Records department at the college alongside my studies".



SARAH MCINNES

Foundation Degree Psychology

Mature learner Sarah McInnes commented "Since going back into full time education the foundation degree was a great way to build my confidence and take the first steps towards getting back into education after years in the workforce. I've learned new skills, met fantastic people and enjoyed every moment of the learning experience. Studying the foundation degree has helped me gain confidence in my own abilities, realise my passion for the subject and given me exciting opportunities for my future". Sarah has since qualified with a first-class honours Degree in Psychology and awarded the Dean Award in the University of South Wales for outstanding and notable achievement.



Case Study

CALLUM HULBERT

Former PGCE learner Callum Hulbert commented on his experience at The College Merthyr Tydfil "I have been very fortunate to experience the college from a student and lecturer perspective. It is from my time as a student that I gained the clear understanding of the college standards and values in which I believed inspired myself to return and pass these standards onto the next generation of learners. I utilised the qualifications I achieved at The College Merthyr Tydfil to progress into the world of work where I became a successful skilled person within the carpentry sector. This allowed me to hone in on my skills and gain a greater level of maturity. Having had a positive learning experience within the college, I had always considered this as an establishment I could see a future within. This set me along the path of enrolling onto the PcET and my teaching career, I was immediately welcomed into the AMBE division and felt a valued addition to the PcET course. It is

through the continued support and working relationships within the college that helped me gain the level of success I have achieved to date. The course enabled me to broaden my knowledge on a range of teaching strategies and the high expectations that I will strive to achieve. In order to reciprocate the aid, I received during my course I have now been able to share my good teaching practices. I was nominated to deliver a CPD session to my colleagues inspiring them on the use of new forms of technology to enhance the learning experience. The college continue to acknowledge my achievements by awarding me a certificate for outstanding performance during the 2021-2022 academic year, and further invest in my professional development through enrolling me on the Outstanding Teachers Programme, where I will be able to continue my own personal growth and enhance my understanding of the educational environment".





Panasonic Trust Future Engineers Award

The college is working in partnership with the Royal Academy of Engineering and Panasonic Trust to take forward 'The Welsh Valleys Engineering Partnership Project', an initiative designed to establish a support programme in the Blaenau Gwent area to embed sustainable, systemic change in engineering education in South Wales and to encourage greater number of young people in the region to study STEM subjects and equip them for possible careers as engineers and technicians. As part of this project, we are offering 10 bursaries of £2000 each for learners coming from the Merthyr Tydfil schools who are wishing to progress onto a career in Engineering and are opting to study subjects that will help them to pursue this career.

Applications for the Bursaries open at the end of January each year. Your STEM teachers in school will let you know when they are available and support you to complete your application.

For further details on the bursary, please contact
Shelby Berry on s.berry@merthyr.ac.uk

How will the Panasonic Trust Future Engineering Award benefit me?

Becoming a PTFEA at the college, will enable you to:

- › Gain a laptop from Panasonic to support you during your studies at college
- › Participate in key employer engagement sessions, projects and activities with major employers such as Panasonic, Nexperia



Personal Learning Accounts (PLA)

Take advantage of our FREE and FLEXIBLE courses across a range of key sector areas.

If you're over 19, in a job earning less than £29,534 a year and want to take the next step to a great career, a **Personal Learning Account** could be just what you're looking for.

What is a personal learning account?

Personal Learning Accounts provide a flexible and fully funded learning entitlement model to support employed individuals earning under 29K as well as those on furlough or who's jobs are at risk, gain the right skills to either change careers or progress in employment at a higher level. The courses are specifically designed to address vocational training in sectors where there is a skills shortage to ensure the future needs of the economy are met.

Who is eligible?

Individuals must:

- › Reside in Wales
- › Want to gain skills/qualifications in priority sectors
- › Be aged 19 years old or over

In addition, Individuals must meet at least **ONE** of the following criteria:

- › Employed (including self-employed) and earning under the median income (£29,534), or
- › Workers on zero hours contracts, or
- › Agency staff, or
- › At risk of being made redundant, or
- › Offenders on day release
- › In addition, full-time carers (paid or non-paid) may be offered PLA funded provision where there is capacity on existing courses (i.e. infill)

How will a PLA benefit me?

- › Improve prospects - giving you the skills to retain or secure a job
- › Help you to progress to the next stage of your career
- › Help you gain the skills you need to support a career change

Want to apply for a Personal Learning Account? Or still unsure if you're eligible? Visit our website and submit an expression of interest. Please note, eligibility is subject to change.

Case Study

LEE CLARKE

Lee Clarke came to us to undertake a training course and had no prior experience and had never been on a site before. Lee was working in a factory job, which he was not enjoying and wanted to find a way out to change career paths and better himself.

He thrived during the course and it became clear that he was picking the structure up very quickly and was keen to learn as much as possible.

After the course we put him in contact with some construction firms and he was able to secure employment on a large contract (heads of the valley construction) with Aberdare Construction where he is thriving and earning more wages in a job where he feels valued.

Lee's foreman has stated how well he is doing and the benefits of training to upskill individuals has on the standard of work being undertaken.



Next Steps

Step 1 – Identify the right course for you

Check out our broad range of courses and subject areas available at the college and find out as much as you can about them through:

- ▶ Our prospectus
- ▶ Website – www.merthyr.ac.uk
- ▶ Visiting open evenings
- ▶ School based information events
- ▶ Careers Adviser
- ▶ Telephone one of our Admissions team on 01685 726012
- ▶ Email admissions@merthyr.ac.uk

Step 2 – Make an application

Head over to our website – www.merthyr.ac.uk and choose the course you are interested in and then click on the Apply Now button. If you are applying for A Levels, you just need to click on your first choice and then it will give you the option of adding the rest of your courses at the end of your application process.

Step 3 – Interview and WEST assessment

You will be invited for an interview to discuss which course you are best suited to. We will also ask you to complete an initial assessment for numeracy and literacy.

Step 4 – Your course offer

You will receive an email, text or letter offering you a place on your chosen course(s) or the opportunity to discuss alternative options with our Admissions team. We will ask you to confirm your acceptance of the offer by email or telephone.

Step 5 – Enrolling at the college

You will be sent a welcome pack with details of how to enrol at the college. Our finance team will provide you with the information you need to apply for any additional grants to support you during your studies.

Additional Learning Support

During the application process, you will be encouraged to disclose and Additional Learning Needs and/or disabilities so we can offer effective support. The college additional learning needs coordinator (ALNCo) can provide advice and support to learners, parents, carers/guardians and members of staff.

Once an offer is made and/or accepted the college will ascertain any learning support currently being offered so that the college can prepare support in advance of you being enrolled.

The ALNCo will assess your support requirements for interview and on program. Disclosures that you made on your application at interview or at enrolment will all be passed on to the ALNCo.

A confidential interview can be requested if you would prefer to discuss any Additional learning needs and/or disabilities. You may choose to bring an advocate to the meeting if you wish to do so.

Please contact:

Rhian Francis

Telephone: **01685 726029**

Email: rfrancis@merthyr.ac.uk

