

The College
Merthyr Tydfil
Y Coleg
Merthyr Tudful

2022-2023

A Levels & Further Education Courses

Your College, Your Choice, Your Future



University of
South Wales
Prifysgol
De Cymru

The College Merthyr Tydfil is
part of the University of South
Wales Group
Y Coleg Merthyr Tudful rhan
o Grŵp Prifysgol De Cymru

Contents

- 3 Welcome
- 4 Why Choose Us?
- 5 Our Class of 2021 – success stories
- 6 Outstanding Learner and Pastoral Support
- 7 Learner Zone
- 8 Enterprise needs you!
- 9 Welsh and bilingual opportunities
- 10 Future Pathways – Supporting your progression
- 11 Supporting your progression on to University
- 12 Fy Amser
- 13 Choosing the right course
- 14 Qualifications on offer
- 15 Apprenticeships & Traineeships
- 16 A levels and level 3 vocational courses
- 17 A Level provision for 2022/2023
- 18 Accountancy
- 19 Business and Management
- 20 Children’s Care, play, Learning and Development
- 21 Computing, ICT, Games Design & Esports
- 22 Construction
- 24 Creative Industries
- 26 Design and Technology
- 27 Electrical Installation
- 28 Engineering
- 29 English & ESOL
- 30 Foundation Learning
- 31 Hairdressing & Beauty
- 32 Health & Social Care
- 33 Humanities, Social Sciences & Languages
- 35 Motor Vehicle Technology
- 36 Science and Mathematics
- 38 Sport
- 39 Public Services and Outdoor Adventure
- 40 Travel & Tourism
- 41 Access to HE
- 42 HE courses
- 43 Panasonic Trust Future Engineers Award
- 44 Next steps – How to apply

Academic Year 2022-2023

Course Enrolment

Monday 22nd August – Friday 2nd September 2022

Open Events

Whether you are a school leaver thinking about your next steps or an adult learner seeking to develop your skills or qualifications further, our open evenings provide the perfect opportunity for you to come in and view our facilities, meet our staff and talk to current students about their experiences of studying with us.

Come and see us on:

Wednesday 9th March 2022

Thursday 12th May 2022

For details of information sessions taking place at local secondary schools, please visit: www.merthyr.ac.uk

A Level results day

Advice and Guidance ‘drop in’ session

Thursday 18 August 2022 from 8.00am

GCSE results day

Advice and Guidance ‘drop in’ session

Thursday 25th August from 8.00am

Keep in touch with us!

Follow us on Facebook and Twitter to keep up to date on all of our college news.

[/collegemerthyrtidfil](https://www.facebook.com/collegemerthyrtidfil)

[@CollegeMerthyr](https://twitter.com/CollegeMerthyr)



Use your smartphone to scan this code and it will take you to our website.

College Merthyr Tydfil embraces the Equality Act 2010 and complies with the Public Sector Equality Duty. Our Strategic Equality Plan can be viewed on the college web pages.

The college has taken every effort to ensure that this course guide is as accurate as possible at the time of going to print. It is intended as a general guide to college courses and facilities and forms no part of a contract. The college reserves the right to make changes or withdraw, without notice, any of the courses, course facilities or support described.

Welcome to The College Merthyr Tydfil

Whether you are a student leaving school in 2022, or a prospective further or higher education learner, we offer a unique opportunity to study at a modern and exciting campus that offers state of the art learning for all, right in the heart of Merthyr Tydfil.

The College Merthyr Tydfil offers something for everyone, with an extensive range of full time and part time courses, including a wide range of 30 AS and A Levels, vocational courses and further and higher education programmes – all delivered by a highly qualified and dedicated teaching team.

We offer a first class learning experience to all who study here. Our commitment to your learning experience, together with our award winning facilities, comprehensive course choices and outstanding student support will ensure that you can achieve your maximum potential and successfully gain the qualifications you require to progress to further or higher education or employment.

In addition, our partnership with REDHOUSE (Old Town Hall/ Hen Neuadd Y Dref) enables learners wishing to study in creative and performing arts the opportunity to study in a specialised creative industries centre.

We hope this course guide provides you with some of the information that you require on the courses on offer and general life at the college.

If you do require any additional information please do not hesitate to contact Student Support on 0800 1693825.

We look forward to welcoming you to study at The College Merthyr Tydfil in 2022.

LISA THOMAS, College Principal



Lisa Thomas, College Principal

Lisa Thomas

Why Choose Us?

Top Performing A level Academy

- › Offering a range of over 30 A Levels across a broad range of subject areas.
- › 99% A Level pass rate – the highest amongst all further education colleges in Wales.

Vocational Centre of excellence

- › Highest performing college for vocational courses.
- › Offering over 60 different vocational qualifications and routes from business through to construction, engineering, sport, hair and beauty and many more.
- › 100% success rate across many vocational areas.
- › Comprehensive range of traineeship and apprenticeship opportunities.

High quality teaching and learning

- › Innovative and inspiring lessons.
- › Commitment to training all staff on the OLEVI Outstanding Teacher programme.

Fantastic Enrichment Programme

- › Sports Academy.
- › Wide range of lunchtime and after college clubs in areas such as computer programming, debating, dance and E-Sports etc.
- › Opportunity to participate in Welsh and National Skills competitions.

First-class facilities

- › Modern, state of the art facilities.
- › Dedicated Creative Industries facilities at Redhouse.
- › State of the art gym and fitness suite, brand new Golf Suite with Simulator, first class Gaming and E-Sports suites.

Exciting range of extra-curricular activities including European educational trips and placements

- › Exciting range of international and european educational trips and visits e.g. Business annual trip to New York and work experience placements.

Opportunity to participate in prestigious university and work placements

- › Excellent links with the Seren 'Oxbridge' Hub to provide opportunities for learners to engage with elite universities.
- › Dedicated UCAS co-ordinators to help learners engage with initiatives such as the Cambridge STEP programme and Oxford University Summer school.
- › Dedicated Futures Pathways Team to help learners become 'employment ready'.

Friendly and welcoming environment

- › Friendly, supportive and nurturing staff who are dedicated to providing each and every learner with the best experience possible.

Outstanding pastoral care and support

- › Personal and course tutors.
- › Designated Learning Coach team to support additional learning needs.
- › Dedicated Learner Welfare and Mental and Emotional Health and Well-Being Support team.



Our Class of 2021 – success stories

Our class of 2021 achieved exceptional results with a 99% pass rate at A Level and 100% pass rate across many vocational areas.



Afon Taf

Maidie Hope-Davies, former Afon Taf pupil, achieved an A and 3Bs, providing her with the grades she needed to progress on to study Marketing and Management at Exeter University. Maidie, who was over

the moon with her results, commented “I have thoroughly enjoyed my time at college as I could study the subjects I was most interested in, to get into my chosen career path. Even though the past year has been tough with online learning, I feel as though the college has provided us with great support to improve our working grades by keeping online learning as interactive and engaging as possible. My plan is to continue my academic journey at Exeter University, studying Marketing and Management, which would not have been possible without the encouragement and support of the business department at the college.”

Pen-y-dre

Former Pen-y-Dre learner Shay Mullun – Commenting on his time at college, Shay said “I have thoroughly enjoyed all aspects of college. Being able to be part of the Welsh Valleys Engineering scheme provided me with a range of opportunities to further develop my knowledge and skills and support my progression on to university.”



Bishop Hedley

Former Bishop Hedley Learner Edelle Mariano achieved an A* in Maths, A* in Chemistry, A in Biology and an A in her Extended Project.

Edelle, who has now progressed on to study Biomedical Science at Kings College London, commented “The community at Merthyr College made me feel so supported in all aspects of my learning. I’m so grateful for the teachers who continued to stay enthusiastic despite the circumstances and offered guidance as much as they could whilst we were adjusting to online learning. This experience has helped me leave with the confidence to progress into further education to pursue a career in the medical field.”



Cyfarthfa High School

Past Cyfarthfa pupil Mackenzie Vinnicombe achieved an outstanding A* in maths, A* in History, A* in Psychology and an A in Biology, enabling her to progress on to study Psychological and Behavioural Science at Cambridge University.

Commenting on her results, Mackenzie stated “I’m so grateful for the help and support I’ve received from Merthyr College, from writing my personal statement to the interview process for Cambridge University. I’m especially grateful to Nicola and the Psychology department who believed I could do it when I doubted myself and for mentoring me throughout the whole process. I couldn’t be happier.”





Outstanding Learner and Pastoral Support

We pride ourselves on our high quality teaching and learning, but this is only part of the picture.

Every learner matters to us - you are all unique. In addition to providing a wide range of courses, we also provide an environment in which learners of every ability and ambition, can succeed. This might be in terms of the qualifications you gain, the new skills you acquire, or the extracurricular or entrepreneurial activities you take part in. Throughout your time with us, you can be rest assured that we will provide each and every one of you with the care and support that you deserve. We are committed to respecting culture, celebrating diversity and promoting a safe learning community for all. Many of our learners and visitors often comment about how friendly, safe and welcoming the college environment is.

Admissions Team

Your journey at the college begins with the Admissions process. We have a dedicated Admissions and Enquiries team who will support you through your application and enrolment process.

We will provide you with advice, support and guidance to help you choose the right course for you and be your first point of contact for any queries you have related to completing your application form or attending your interview. Once you have been made an offer, we will help ensure that you have all of the information you require on transport and funding to help with the cost of your studies and also help to ensure that your transition into college is as smooth as possible.

Wellbeing Hub

Our dedicated Wellbeing Hub provides an integrated support system for learners, with expert, advice, guidance and support focussing on all aspects of wellbeing, including safeguarding, Additional Learning Needs support, Inspire to Achieve (I2A), study skills support along with medical and therapeutic inputs from a Nurse Practitioner and Counsellor.

Members of the team are also available to attend school transition reviews as part of the admissions process for college.

Financial Support

Our Finance team are here to provide you with support, help and guidance on all aspects of funding and travel to college. We have a range of grants and bursaries to help with the costs of your study. For further information, please visit:

www.merthyr.ac.uk/content/fees-and-financial-support

Scholarships

The college offers a range of scholarships for learners progressing from the Merthyr Tydfil schools. These include:

- › An Academic Excellence Scholarship - for learners who achieve 7 or more grade A's.
- › Inspirational Learner of the Year Award.
- › Vocational Excellence Award.
- › Sporting Excellence Award.
- › Welsh Valleys Engineering Project Ambassador Bursary.

For further information, please contact Shelby Berry on s.berry@merthyr.ac.uk

Help with the costs of transport

If you are aged 16, 17 or 18 years on September 1st 2022 and planning to study full-time you may be eligible for free transport. For more information please visit:

www.merthyr.ac.uk/content/travel-policy

Learning Zone

The college has a dedicated Learning Zone which provides access to a wide range of high quality services, facilities and support for learners at all levels.



Resources include:

- › Print & electronic books and journals.
- › Print & electronic subject guides.
- › I.T facilities, including free Wifi.
- › A multimedia room with interactive whiteboard and DVD playback facilities.
- › Study spaces designed for both individual, silent study and group work.
- › An online public access catalogue Findit to locate, reserve & request items and manage personal borrowing.
- › Access to a range of user education sessions designed to support you in your studies.

Learners will also have access to resources held at the other site libraries within the University of South Wales group, through the inter-site request system.

Information for Parents/Carers

The College Merthyr Tydfil will represent a brand new learning experience for your son and daughter and we're keen to ensure that we provide as much information, advice and guidance to support both you and them to make the right decision about the course(s) they wish to study at the college and ensure that their transition from school to college is as smooth as possible.

Working with you to support your son/daughter's progress at college

Like secondary schools, we welcome the involvement of parents/carers and will work with you to ensure that your son/daughter achieves their maximum potential. The reason for this is that we know that the students who perform best are those who do three things:

- › Work hard.
- › Are supported and taught by high quality and committed teachers.
- › Are supported and encouraged by parents.

Therefore, we will ensure that you:

- › Play a full role in the partnership between your son/daughter and the college.
- › Have an opportunity to come in at the beginning of term to meet your son's/daughter's tutors.
- › Are informed straight away about any instances of non-attendance.
- › Receive comprehensive, accurate and timely information from the college throughout the duration of their chosen course of study, including college newsletters.
- › Receive progress reports on your son/daughter twice yearly.
- › Attend a parents/carers evening twice yearly to discuss your son/daughter's performance.

Enterprise needs you!

Our mission is to discover entrepreneurial talent in the college, finding and nurturing bright young entrepreneurs of any age and level. Enterprise and entrepreneurship are embedded into our approach to teaching at the college.

We support learners to develop ideas into viable business plans. Whether for one-to-one business mentorship or simply for an informal chat about a business concept, we are always on hand to offer advice and practical tools to grow your dream into reality.

Case Studies

GAIL MORGAN

Gail Morgan is an entrepreneurial learner accessing our support network to set up a mobile beauty business. She recently completed her level 3 qualification in beauty and is currently studying for a barbering qualification. "It is my vision that I will have a successful, profitable business with an outstanding reputation for quality work, and securing repeat customers." Gail has received support to complete a business plan and has joined Tafflab, a mentorship scheme which equips and enables entrepreneurs to succeed.

GEORGIA POWELL

Georgia studied A-Levels at the college and went on to graduate from Rambert School of Ballet and Contemporary Dance. When lockdown hit her love for vintage clothing and music from the 1950's and 60's propelled her to start her own business. Working alongside Christine, Georgia was awarded a Tafflab award and with mentorship from Christine her business in the Merthyr Indoor market has flourished.

Case Study

STEPHEN WILLIAMS

Stephen Williams is a plastering Level 2 learner at the college who we are supporting to start his own general construction business.

After one to one sessions, Stephen has now applied for Tafflab funding, hoping that he can get industry specific mentorship.

Contact Information

For more information please contact the Enterprise and Employability team at The College Merthyr Tydfil:

CHRIS BISSEX

Office: 01685 726175 Mobile: 07710 961042

Email: C.Bissex@merthyr.ac.uk

Alternatively, just pop to reception and ask for Chris Bissex or Hannah Casey. We would love to hear from you!

Working closely with partners in Merthyr Tydfil County Borough Council, the Wales Council for Voluntary Action (WCVA), Business Wales and the Prince's Trust, we are able to offer a tailored support service for anyone interested in starting or growing their own business.

Our mission is to discover entrepreneurial talent, finding and nurturing entrepreneurs of any age and level. There is no eligibility criteria other than your willingness and desire to start something new.

We will work with you to support and develop your ideas into viable business plans. Whether for one-to-one business mentorship or simply for an informal chat about a business concept, we are always on hand to offer advice and practical tools to grow your dream into reality.

For further information, please contact FAY GODDARD on 01685 727509 or email fay.goddard@tydfil.com

Welsh and bilingual opportunities

The College offers many opportunities for students who want to practice, improve and use their Welsh skills both in the workplace and in a learning environment.

Our dedicated Bilingual Champion is here to help and support learners through:

- › Providing subject specific study skills support.
- › Offering a comprehensive programme of Welsh medium enrichment activities.
- › Providing bilingual glossaries and vocabulary.
- › Welsh medium mock interviews and guidance to write CVs and cover letters.
- › Opportunity to participate in Welsh cultural events.
- › Look out for our themed Welsh events, activities and clubs that take place throughout the academic year.

Welsh language Scholarships

Our Welsh language scholarships are available to students studying the Welsh Baccaulaureate programme at the College.

- › Students will have the opportunity to produce their work through the medium of Welsh.
- › The scholarships are £100 each.
- › To qualify for the scholarships, students must apply for a full-time course at college.

Case Study

GWILYM DAVIES

“I have really enjoyed the college’s Welsh language opportunities which have allowed me to continue my links with the language. I have completed my Welsh Baccaulaureate hours through working alongside the Welsh Language team”.

Welsh Ambassador Scholarships

The college is looking for Welsh language ambassadors to share your student experience and promote the Welsh language throughout the college and public events. Embracing the language will help you gain invaluable skills to benefit you now and in the future such as:

- › Enhance your personal knowledge and improve your skills, particularly in marketing, communication, organisation, planning, leadership and team work.
- › Gain experience and boost your confidence.
- › Meet new friends.
- › Add to your CV and improve your employment prospects.

Case Study



DAISY WRIGGLESWORTH

“My name is Daisy and I am a student at the college. As a Welsh speaker, I have so many opportunities to use my Welsh language through Welsh language scholarships, joining the Welsh language

team and becoming a Welsh language ambassador. These opportunities have helped me to develop my skills and use the Welsh language with confidence!”

Am fwy o wybodaeth cysylltwch â Hyrwyddwr Dwyieithrwydd y coleg
LYNWEN HARRINGTON ar **0168572600** est **6331**
neu e-bostiwch **l.harrington@merthyr.ac.uk**



FUTURE PATHWAYS

Future Pathways – Supporting your progression

Future Pathways is our dedicated Employability team offering bespoke employability, career and progression advice.

We host a variety of open evenings, volunteering and career events throughout the year.

Follow our dedicated Twitter page @pathwaysfuture for regular updates on job vacancies, career advice, events, live sessions, guest speakers and employability opportunities across Wales and the UK.

Drop into the Future Pathways Hub for help with:

- › CV development.
- › Cover letters.
- › Job applications.
- › Interview skills.
- › Presentation skills.
- › Career pathway advice.
- › Work placements.
- › Starting your own business.
- › Welsh in the Workplace.

Ask us about:

- › Bootcamps (Big Ideas Wales).
- › Role Model sessions.
- › Volunteering opportunities.
- › Work placements.
- › Apprenticeships and training.

Come along to meet a wide range of employers, volunteering charities, universities, career mentors and business advisors! We work closely with a large number of local and national employers and collaborate closely with Job Centre Plus and Careers Wales to keep abreast of latest job vacancies and training opportunities.

Our aim is to ensure that every learner receives the best possible advice and guidance, receiving regular updates on progression and current employability opportunities.

Our Student Services team can also advise on funding and signpost to the most appropriate courses.

In conclusion, we provide a 'one stop shop' for Employability and Progression at the college, embracing the learner experience to ensure that the learning journey is enjoyable and rewarding.



Contact our Employability and Progression Co-ordinator for further information:
Verity Jones 01685 726157
v.jones@merthyr.ac.uk

Working in partnership with:

- › JNP Legal
- › Transport for Wales
- › Morgan Sindall Construction
- › Tilbury Douglas
- › Panasonic
- › Cwm Taf Morgannwg University Health Board
- › Philtronic Limited
- › Tenneco
- › Valleys Construction

Supporting your progression on to University

If you are seeking to progress on to university, we offer a tailored programme of support to help you along the way. This includes:

- › Dedicated college UCAS co-ordinators to guide you every step of the way through the UCAS process.
- › Help and support to develop your personal statements (including sessions run by leading universities).
- › Programme of interview support, including mock interviews with the college Principal.
- › Comprehensive range of enterprise activities to help you develop a range of transferable skills, build your confidence and gain experience of real life business situations.
- › Annual College Career Pathways Event to enable you to talk to employers and universities about career and higher education options.

Supporting more able and talented learners

The college is committed to supporting its high aspiring students. We have a dedicated and unique programme of activities and events, which will enable you to stand out from other equally able students from across the country.



The programme includes:

- › University level courses.
- › Motivational speakers.
- › Higher education conferences organised by Oxford and Cambridge universities.
- › Student support with university entry exams.
- › Motivational talks from invited guests and college alumni.
- › Access to the Brilliant Club.
- › Individual student support with university entry exams from experienced tutors.

Oxbridge hub – seren

Students who achieve four or more A* grades at GCSE Level will be able to take part in the Merthyr Tydfil/Rhondda Cynon Taff Seren Hub.

**THE
SEREN
NETWORK**

Fy Amser

Your time at the college can be an enjoyable and rewarding experience. How enjoyable and rewarding it is, depends on you! Our Fy Amser Enrichment programme provides a fantastic range of activities and programmes for you to enjoy, from Yoga, football and other sports through to chess club, educational trips abroad and much more!

Learner Ambassador Scholarships

Looking to get more out of your time at The College Merthyr Tydfil?

Why not consider applying for one of our Learner Ambassador Scholarships

This is an exciting role offering you the opportunity to volunteer during Open Evenings, Parents Evenings, Taster Days and marketing events at your former schools. This could involve meeting and greeting prospective learners and their parents/carers, providing tours of the college building and facilities, chatting to prospective learners about your experience at college, or just helping out your course tutors during key college events. This experience will look fantastic on your CV or UCAS application form. Being an ambassador will enable you to share your experience and gain invaluable skills to benefit you now and in the future.

For further information, please contact Andrew Jones on a.jones@merthyr.ac.uk



Learner Senedd

The Learner Senedd provides a forum where learners can come along and have their say on the development of the college, your learning and your well being. Meetings are held on a monthly basis. Representatives will be elected in September of each year. Being a Learner Senedd representative is a really important role as it enables you to:

- ▶ Give your views on all aspects of college life. Represent the views of your fellow learners and class friends. Get involved in taking forward recommendations and actions for improving aspects of college life.
- ▶ Help enhance your communication, team working and organisation skills.

If you are interested in becoming a part of the Learner Senedd then please contact:

Andrew Jones in Student Admissions via email on a.jones2@merthyr.ac.uk

Academy of Sport

The college has developed a sporting academy focusing on football, netball and rugby. These teams will train on a Monday, play on a Wednesday and have a recovery and analysis session on a Friday. There will be opportunities throughout the open training sessions to show your abilities to the coaches. Additionally, our excellent partnership links with Merthyr Tydfil Football Club, Merthyr Tydfil Rugby Club and local gyms and fitness centres provide the perfect opportunity for our learners to engage in a variety of extra-curricular activities, including strength and conditioning, table tennis, golf, cricket and much more!

Follow our Sports Academy on Twitter @MSPORTSACADEMYC

Check out our new Golf Academy and state of the art facilities.

Choosing the right course



We offer a wide range of qualifications from Entry Level through to Level 6 covering a broad spectrum of subjects, so whatever your future ambition, we have a suitable course for you.

We place great emphasis on ensuring that all learners are placed on the best course for them, taking into account their skills and qualifications achieved to date, their aspirations and their intended career path.

The college entry requirements provide a benchmark guide for this process, so that learners are aware of the level of qualifications, skills and knowledge they require to study on the course, helping to ensure that each learner is on a course maximum potential.

The subjects you choose to study may depend upon:

- › The qualifications you have already gained or your impending GCSE examination grades.
- › The subjects you enjoy.
- › The subjects you need to study in order to progress to your chosen higher education course or chosen career.

Qualifications Explained

LEVEL E LEVEL 1

- › Entry and Level 1 qualifications give students a chance to develop a range of skills with plenty of individual support. No formal qualifications are needed to get on to this level of courses.
- › Qualifications on offer include BTEC Entry Level certificates, BTEC Level 1 WBQ Foundation Post 16.

LEVEL 2

- › BTEC Level 2 certificate.
- › VRQ Level 2.
- › GCSE Mathematics and English.
- › Apprenticeships.
- › WBQ Foundation Post 16.

LEVEL 3

- › AS and A2.
- › VRQ Level 3.
- › BTEC Diploma, Subsidiary Diploma and Extended Diploma.
- › Welsh Baccalaureate Advanced.

LEVEL 4

- › Certificate of HE.
- › Year 1 Foundation Degree.

LEVEL 5

- › Year 2 Foundation Degree.

LEVEL 6

- › Year 3 BA Hons Degree.



Qualifications on offer

Literacy and Numeracy skills

Looking to improve your literacy and numeracy skills? The college offers the following courses and classes on a part-time basis.

- › Literacy Skills.
- › Numeracy Skills.
- › Pre GCSE English and Mathematics.
- › GCSE English and Mathematics.

AS Level & A Level

These are recognised entry qualifications for university courses. An A Level includes AS and A2 units. In your first year you can usually choose to study up to four subjects at AS Level. At the end of your first year you take an AS Level exam and gain a recognised qualification.

You can continue for a second year and achieve the full A Level.

All full time students studying A Level programmes are required to study 3 A Level subjects in addition to the Welsh Baccalaureate.

Vocational (e.g. BTEC, UAL, City and Guilds, WJEC)

Level 3 vocational qualifications are recognised entry qualifications and an excellent route to university. There are vocational qualifications available in a wide range of subjects. They have been designed in collaboration with industry, so they equip you with the skills and knowledge that employers are looking for. The qualifications offer a mix of theory and practice, and usually include an element of work experience. They are available at Levels 1, 2 and 3.

Vocational or A Level? What is the difference?

Both A Levels and Level 3 qualifications are recognised entry qualifications for university courses.

Skills Programmes

The college offers a range of skills programme to support learners develop their literacy, numeracy, digital, critical thinking, planning and overall personal effectiveness skills. These skills are offered across a range of Essential Skills Wales and Agored programmes.

NVQ (National Vocational Qualification)

NVQs are work-related qualifications normally delivered and assessed in the workplace. These can form part of an Apprenticeship. A qualified assessor will observe you and assess you on the actual work you carry out in the workplace. They will test your knowledge and understanding as well as your performance.

'Skills for further study' and 'access to higher education'

We offer Level 2 Skills for Further Study and Level 3 Access to Higher Education courses.

VRQs

VRQs are widely recognised professional qualifications, enabling learners to improve their knowledge, skills and understanding of specific areas of employment.

GCSE English and Mathematics

We offer GCSE resits in English and Mathematics and they will provide you with a chance to improve on the grades you obtained in the previous year.

Welsh Baccalaureate

The college offers the Welsh Baccalaureate Qualification (WBQ) at three levels across a range of vocational and academic areas;

- › Level 3 Advanced/BTEC WBQ Advanced.
- › Level 2 BTEC/Vocational WBQ National Post 16.
- › Level 1 BTEC/Vocational WBQ Foundation Post 16.

Apprenticeships & Traineeships

Not sure if full-time learning is for you? Apprenticeship and Traineeship programmes provide the perfect opportunity for you to achieve qualifications and skills whilst in employment (Apprenticeships) or undertaking work experience (Traineeships).



How does it work?

For Traineeships and Apprenticeships, you get to spend four days a week in employment or work placement and one day at college.

Traineeships

- › Up to £50 non-means tested allowance, depending on which strand of the programme you follow.
- › Develop Employability Skills.
- › Wide range of traineeships on offer with local work placements.
- › Progression from this includes employment, apprenticeships or further education.

What will I gain from it?

- › Earn an allowance.
- › Get paid holidays.
- › Receive job specific training.
- › Achieve qualifications.

Apprenticeships:

- › Exciting opportunities to study qualifications from Level 2 to Level 5.
- › Employed status so you earn a wage whilst achieving job specific qualifications.
- › Attendance at college or Training Centre once a week.

We currently offer apprenticeships in:

- › Management and Team Leading.
- › Business Administration.
- › Retail & Customer Service.
- › Construction Trades.

- › Engineering.
- › Mechanics.
- › Warehousing & Storage.
- › Hospitality (Food & Beverage).
- › Shared Apprenticeship Programme offered in Merthyr Tydfil for STEM apprenticeships through Aspire.

Case Studies

SHAUN ABBOTT

Shaun, a former Mountain Ash Comprehensive School pupil, started in the college as a Skillbuild learner with an occupational aim of becoming a fully qualified mechanic. Shaun worked really hard to complete level 1 enabling him to progress successfully on to level 2 and then on to level 3.

Shaun is proof that, with hard work and dedication, you can achieve your goals.

COREY WILLIAMS

Work based learning student Corey Williams represented the College Merthyr Tydfil at the Welsh National Eisteddfod at Cardiff Bay.

Corey completed a six week Welsh course at the college covering reception skills, both over the telephone and as a meet and greet receptionist.

Want to know more?

Contact our team of advisers directly
Telephone: 01685 371747 or
email: susan.type@tydfil.com

A levels and level 3 vocational courses

A levels and level 3 vocational courses can be used to enter higher education courses. Entry onto these courses are denoted by a UCAS Tariff. The table opposite shows UCAS points tariff for A Levels & BTECs:

How to progress into Higher Education

The Universities and Colleges Admissions Service (UCAS) uses a points system to set a value for a range of qualifications. To find out the entry requirements for the degree that you are interested in visit: www.ucas.com

University of South Wales

The college's partnership with the University of South Wales enables us to provide enhanced progression pathways to higher education, offering a wide range of university level courses here at the College Merthyr Tydfil. With over 400 currently enrolled on university level qualifications, the college provides high quality teaching and support ensuring that all learners achieve their maximum potential and successfully gain the qualifications required to progress onto honours degree programmes, professional qualifications or employment.

Tariff Points	AS	A Level	BTEC Sub Diploma	BTEC 90 Credit	BTEC Diploma	BTEC Extended Diploma
168						D*D*D*
160						D*D*D
152						D*DD
144						DDD
128						DDM
112					D*D*	DMM
104					D*D	
96					DD	MMM
84				D*D*		
80					DM	MMP
78				D*D		
72				DD		
64					MM	MPP
60				DM		
56		A*	D*			
48		A	D	MM	MP	PPP
40		B				
36				MP		
32		C	M		PP	
30						
24		D		PP		
20	A					
16	B	E	P			
12	C					
10	D					
6	E					

Key to BTEC Grades

D* - Distinction (A* equivalent) D - Distinction M - Merit P - Pass

A Level provision for 2022/2023

A Level Subject	Entry Requirements
Art & Design	5 GCSE's grade A*-C Including English Language and a B in Art and Design
Applied Science	5 GCSE's grade A-C including C in Maths, English and Science
Business	5 GCSE's grade A*-C including English and B grade in Maths
Biology	5 GCSE's grade A-C including at least a B in both Maths and English, BB in double science or BBB in triple science
Chemistry	5 GCSE's grade A-C including at least a B in Maths (usually Higher Tier), BB in double science or BBB in triple science
Computer Science	5 GCSE's grade A*-C, B grade or above in Maths or Tech/Science based subject and C or above in English
Criminology	5 GCSE's grade A*-C including English
Design & Technology	Grade C or above in English Language and Maths. B grade in D&T at GCSE
Drama	Level 2 qualification in performing arts. Equivalent of four C grades at GCSE (to include one subject testing the use of English)
Electronics	5 A*-C including English Language and Maths, B and above in English
English Lit	5 A*-C including English Language and Maths, B and above in English
English Lit & Lang	5 A*-C including English Language and Maths, B and above in English
Engineering	5 GCSE's grade A*-C to include Mathematics, English
French	C grade or higher in GCSE French and English Language
Further Mathematics	8 GCSE's grade A*-C including a minimum of A in Maths
Geography	5 GCSE's grade A*-C including English Language, Maths and Science GCSE Geography is desirable but not essential, However this is at the tutors discretion. If GCSE Geography has been studied a grade C or above is required
Gov & Pol	5 GCSE's grade A*-C preferably a B grade in History or English
History	5 GCSE's grade A*-C preferably a B grade in History or English
Law	5 GCSE's grade A*-C including a B or above in GCSE English
Maths	8 GCSE's grade A*-C including a minimum of B in Maths
Medical Science	5 GCSE's grade A-C including a C in Maths English and Science
Music	Level 2 qualification in music. Or 4 GCSE grade A*-C (to include one subject testing the use of English). You will be asked to attend an audition
Physical Education	5 GCSE's grade A*-C including English and Maths
Physics	5 GCSE's grade A-C including at least a B in Maths (usually Higher Tier), BB in double science or BBB in triple science
Photography	5 GCSE's grade A-C including English Language
Psychology	5 GCSE's grade A*-C including grade B or above in English Language and a grade C in Maths is desirable
Religious Studies	5 GCSE's grade A*-C including English Language. Grade B or above in English would be desirable
Sociology	5 GCSE's grade A*-C including a B in English Language or Literature
Welsh	5 GCSE's grade A*-C including a Welsh C grade or above in English Language plus a B grade in full course Welsh or an A grade in short course

A Levels

Our A Level Academy offers a choice of over 30 AS and A2 Levels, all delivered by a team of professional and qualified staff. The majority of full-time A Level students follow a programme of three A Levels in addition to the WBQ.

Please note that students are required to take a minimum of three A-Level subjects.

You can also choose to widen your studies further by choosing one or two A Levels in combination with a BTEC certificate.

The general entry requirements for entry onto A Levels are 5 GCSE's at grade C or above (or equivalent) together with the subject specific requirements opposite.

Accountancy

Our AAT courses are run part time and available at a Level 2,3 & 4. This will provide you the perfect foundation route into a career as an accountant or any financial role, the career options are endless.

ENTRY REQUIREMENTS No formal qualifications are required, however applicants should have basic literacy and numeracy skills.

AAT L2 Accounting PT

AAT L3 Accounting PT

AAT L4 Accounting HE PT

PROGRESSION Many learners progress into a variety of accountancy related roles such as: Accounts payable and expenses supervisor, Assistant financial accountant, Commercial analyst, Cost accountant, Fixed asset accountant, Payments and billing manager, Payroll manager, Senior bookkeeper, Senior finance officer, Senior fund accountant, Senior insolvency administrator, Tax supervisor, VAT accountant.

Case Study

OTILIA PASARETI

In 2016, I decided to start up my own business and I'm certain that having my AAT qualifications has helped me to make this a success as it has meant that I can do all of my own accounting and end of year accounts. I think everyone who is trying to manage his/her own business would definitely benefit from completing the AAT qualification.

Completing my Level 4 AAT has provided me with more confidence and skills to take my business further forward.



Business and Management

A level business studies will enable candidates to focus on the dynamic nature of the contemporary business world.

WJEC AS/A2 Level Business FT

ENTRY REQUIREMENTS 5 GCSE's A*-C including English Language and B grade in Mathematics.

Our Business and Management courses offer an excellent foundation for working in any business environment, ranging from Level 2 to Higher Education.

BTEC L2 Extended Certificate in Business FT

ENTRY REQUIREMENTS No formal qualifications are required, however applicants should have basic Literacy and Numeracy skills 5 GCSE A*-D grade.

BTEC L3 National Foundation Diploma Business FT

ENTRY REQUIREMENTS Applicants are expected to possess a minimum of 5 GCSE passes at A*-C grades or equivalent qualifications or a Level 2 in Business at a Merit grade.

BTEC L3 Events Management and Hospitality – NEW FOR 22/23

ENTRY REQUIREMENTS 4 GCSE's A*-C including English Language and Mathematics.

PROGRESSION Successful completion of this course will enable you to progress onto the college's Foundation Degree in Business Management or onto other Higher Education institutions, Apprenticeship schemes or directly into employment.

Case Studies

JOSHUA FLYNN

Former Cyfarthfa High School pupil, Joshua, received outstanding vocational results, achieving a D*D*D* in his BTEC Level 3 Business Studies course. Joshua has now progressed on to the Network 75 Apprenticeship scheme to study Quantity Surveying and Commercial Management. Joshua commented "I felt that the whole transition period was very smooth and the college was very welcoming from day one. The tutors were excellent and provided me with full backing to help me achieve the grades I aspired to achieve."

SHANNON RUTTER AND LAURA WILCOKWA

Shannon Rutter and Laura Wilcoskwa both achieved D*D*D* providing them with the qualifications they needed to progress on to University.



Children's Care, Play, Learning & Development

WJEC L2 Children's Care, Play, Learning and Development Core

ENTRY REQUIREMENTS At least 4 GCSE's grade A*-D including C grade in English and/or Maths and a formal interview and references. Level 1 qualification may also be considered.

WJEC L3 Children's Care, Play, Learning and Development Core

ENTRY REQUIREMENTS 5 GCSE's grade A*-C including English and Mathematics.

CACHE L2 Certificate in Supporting Teaching and Learning PT

ENTRY REQUIREMENTS Candidates should be over 16, with the academic skills to work independently at level 2.

CACHE L3 Diploma in Supporting Teaching and Learning PT

ENTRY REQUIREMENTS Candidates should be over 16, hold a relevant level 2 with previous experience of working in a school or college environment.

PROGRESSION These qualifications will provide you knowledge and understanding of the role and context of children's care, learning and development across the UK and a progression route onto our Foundation Degree in Childhood Studies.

Case Studies

TERI BARRY

Former Pen-Y-Dre learner Teri Barry is currently studying for a level 3 qualification in Children's Care, Play, Learning and Development.

"I completed the Level 2 Children's Care, Play, Learning and Development course last year and have now progressed to Level 3. The subject is challenging at times but it is also very enjoyable! I really enjoy going to placement too because it helps me put everything I am learning into practice. The college is a very supportive environment to learn in. Once I have finished my Level 3 course I am hoping to get a job in a day-care nursery with young children."



KAYLA WHEATON

Former Rhymney Comprehensive Learners Kayla Wheaton stated "Coming to the college in September of 2020, I chose the Level 3 Children's Care, Play, Learning and Development course. Throughout Year 1 of this course, I enjoyed learning about all the topic areas when it comes to working with children. During my current year (Year 2) I have enjoyed the practical side of the course, working in a variety of settings with children of differing needs and abilities with the opportunities to put my prior knowledge into practice and develop more as a future childcare worker. Once I have completed this course, I aspire to attend University and become a Social Worker."



Computing, ICT, Games Design & Esports

Our digital industry courses offer an excellent foundation for you to gain the knowledge, understanding and skills to help you increase your chances of employment, allowing you the opportunity to specialise in different areas, such as Games Design, Systems Security, Computer Security and Forensics, Mobile App design, Digital animation, Streaming, Coaching, Video editing, Website Development or programming.

WJEC AS/A2 Level Computer Science FT

ENTRY REQUIREMENTS 5 GCSE's grade A*-C, applicants must have a B grade or above in GCSE Maths or Tech/Science related subject and C or above in GCSE English.

WJEC AS/A2 Digital Technology

ENTRY REQUIREMENTS 5 GCSE's grade C or above, or equivalent. Also, an interest in Computing, Graphics, Animation, Web programming and Cyber Security.

BTEC L1 Introductory Diploma in Information Technology FT

ENTRY REQUIREMENTS No formal qualifications required, however applicants must have an interest in Computing and Information Technology.

BTEC L2 First Ext Certificate Information and Creative Technology FT

ENTRY REQUIREMENTS 4 GCSE grade A*-D or Level 1 IT. Applicants are required to have basic skills in Literacy and Numeracy.

BTEC Level 3 National Foundation Diploma in Information Technology FT

ENTRY REQUIREMENTS 5 GCSE's grade C or above, or equivalent. Also, an interest in Computing, Graphics, Animation, Web programming and Cyber Security.

UAL L3 in Creative Computing and Games Design FT

ENTRY REQUIREMENTS 5 GCSE's grade A*-C or equivalent.

BTEC L3 National Foundation Diploma in Esports

ENTRY REQUIREMENTS 5 GCSE's grade C or above, or equivalent. Also, an interest in Computing, Graphics, Animation, Web programming and Cyber Security.

PROGRESSION Successfully completing these courses will provide you progression into employment or a Higher Education institution to study courses in various digital industries, or the HND which we offer here at the college.

Case Study

RIO JONES

Former pupil and IT learner Rio Jones achieved a triple distinction star in her BTEC level 3 IT diploma, enabling her to now progress successfully on to study the HND computing here at the college. Commenting on her results, Rio said "I think this year has been a bit tough for everyone but the tutors have been so supportive and have helped me to achieve the very best I can on the course."



Construction

The Construction industry is currently growing meaning that there has never been a better time to train for a qualification in any of the trade areas we offer. Our Construction department has an excellent reputation for delivering high quality industry recognised construction courses. Our students not only benefit from our dedicated construction workshops and facilities, but we also provide excellent national and international work experience opportunities, enabling our students to leave us with a range of qualifications and skills to help them stand out from the crowd. So if you want a career in the construction industry, our courses will give you the skills and experience to build strong foundations for your future.

City & Guilds Multi-Skills Level 1 Construction Diploma

The City & Guilds 6219-07 Multi-Skills Level 1 Construction Diploma is a one-year programme for learners who wish to enter the construction industry. You will gain experience of the different skills in a variety of construction pathways including bricklaying, carpentry & joinery, painting & decorating and plastering. On successful completion of the programme, you will have the opportunity to progress to a Level 2 qualification, apprenticeship or further training in your chosen construction trade.

What are the entry requirements?

There are no formal entry requirements. You will be required to complete an interview with one of our construction trade tutors. During the interview, you will need to demonstrate an interest in learning more about construction with a view to progressing to training or work in the industry.

Where can I progress to next?

You could progress on to study Brickwork, Carpentry and Joinery, Painting and Decorating or Plastering at level 2. Alternatively, you could progress into apprenticeship training or employment in the construction industry.

Case Study

KEIRA EVANS

Former Afon Taf Learner Keira Evans, is currently studying for her Level 3 P/T, Painting & Decorating qualification. Keira competed in the UK regional heat of the WorldSkills competition in June against other students from around the UK.



Keira was successful and was invited to the WorldSkill UK final, held in November at the National Construction College (East) – Bircham Newton.

Keira managed to finish in the finalists, showing nothing but passion, commitment, and dedication throughout the process of the event, seeing her as one of the top 6 decorators in the UK.

Since returning, Keira has been in talks with Tafflabs and seeking to set up her own Painting & Decorating company. Keira is inspiring other learners to follow in her footsteps and proving there are numerous opportunities in her career.

City & Guilds Level 2 Foundation Diploma in Construction and the Built Environment (New)

The Foundation in Construction and the Built Environment qualification provides a broad introduction to construction and the built environment. It has been developed for individuals working in or intending to work, in the construction industry. This qualification will enable learners to go on to study a range of other Level 2 or 3 construction courses relevant to their trade interest area. As part of your studies you will be required to study two construction pathways from the following:

- › Brickwork & Blockwork.
- › Carpentry & Wood Occupations.
- › Electrotechnical Systems.
- › Painting & Decorating.
- › Plastering & Interior Systems.

What are the entry requirements?

Learners will need to have achieved a minimum of 4 GCSE's at grade D or above (or equivalent) including Maths and English. Alternatively, learners will have completed the Level 1 Multi-Skills Construction Diploma and have achieved Level 1 Essential Skills Wales (ESW) qualifications in Application of Number and Communications. You will also be required to complete an interview with one of our construction trade tutors. During the interview, you will need to demonstrate an interest in learning more about construction with a view to progressing to training or work in the industry.

Where can I progress to next?

You could progress to further learning in Brickwork, Carpentry and Joinery, Painting and Decorating or Plastering. Alternatively, you could progress into apprenticeship training or employment in the construction industry.

Case Studies

MICHAEL MURPHY

Former part-time Learner Michael completed his level three Painting & Decorating apprenticeship training with over all merit grads in 2021. During his time at the college he displayed impressive skills and completed practical tasks to a very high standard. Michael was entered into the Painting & Decorating Association annual national competition held at Coventry College in June 2021 where he competed against other apprentices' learners.

Michael succeeded in being placed joint runner up. He received his award at the prestigious Panting & Decorating Association annual ceremony at the Plaisterers Hall, in London. The award was a huge accomplishment for both him and his employer.

Since completing his studies, Michael has settled into full time employment with Bagnall Painting & Decorating Contractors.



BEN WEEDALL



Ben Weedall previously studied on our level 3 Brickwork course. Ben was an excellent student who successfully competed in the Wales Skills Competitions. He was also selected to be part of the 2018/2019 ISEiW World Skills Development Squad, a fantastic achievement.

Creative Industries

Creative Industries incorporates Performing Arts, Drama, Music, Media, Film, Photography and Art & Design. Although the courses offered are very specific there are many opportunities for cross-curricular collaboration on large-scale projects. Engagement with the community and local employers is very important and this vocational approach to project work is a huge strength within the division. Opportunities to display practical creative work are abundant and our theatre performances, live music events, film screenings and visual arts exhibitions are of a high quality, receiving excellent feedback from parents, industry professionals and the general public. There are also opportunities to take part in educational visits to galleries or theatres in the UK and abroad.

WJEC AS/A2 Level Art and Design (Art) FT

ENTRY REQUIREMENTS 5 GCSE's grades A*-C, including English Language and a B in Art and Design. You will be asked to bring examples of your artwork to your interview.

UAL L2 First Diploma Art and Design FT

ENTRY REQUIREMENTS 4 GCSE's grade D or above, applicants must show an aptitude for Art and Design. You will be asked to bring examples of your artwork to your interview.

UAL L3 Diploma Art and Design FT

ENTRY REQUIREMENTS 4 GCSE's grade C or above including Art GCSE or UAL/BTEC Level 2 in Art and Design. You will be asked to bring examples of your artwork to your interview.

UAL L3 Diploma in Creative Media Production and Technology

ENTRY REQUIREMENTS Level 2 qualification in creative media production. 4 GCSE's grade C or above (to include one subject testing the use of English). You may bring examples of any media/film work to your interview.

UAL L3 Foundation Diploma in Performing & Production Arts

ENTRY REQUIREMENTS Level 2 qualification in performing arts. Equivalent of 4 C grades at GCSE (to include one subject testing the use of English). Life and employment experience (for mature learners only).

UAL Level 3 Extended Diploma in Music

ENTRY REQUIREMENTS Level 2 qualification in music. Equivalent of 4 grades at GCSE (to include one subject testing the use of English). You will be asked to attend an audition as part of the entry requirements for this course.

PROGRESSION Students can progress on to Higher education courses, FD Art practice and the BA top up are run here at the college, careers in the industry chosen.

WJEC AS/A2 Level Art and Design (Photography) FT

ENTRY REQUIREMENTS 5 GCSE's at grades A*-C, including English Language and a B in Art and Design. You will be asked to bring examples of your art work to your interview.

PROGRESSION Successful applicants usually progress onto a Foundation Studies Diploma. There is also an option to apply to one of our Foundation Degrees in Photography or Art Practice, which now has a BA(Hons) top-up year. Students can also use their Art & Design A level to build up UCAS points towards applications for university courses outside of the visual arts.

Case Studies



TIA BURSTON

Former Afon Taf pupil Tia Burstson successfully completed UAL Performing arts with Distinctions and is now studying BA Acting at Demontfort University.

CHLOE COLEMAN

Former Cyfarthfa Pupil Chloe Coleman achieved a UAL Performing Arts qualification with Distinctions and is going to the University of Chichister to study BA in Dance.

SAMANTHA GRATLAND

Former St John The Baptist pupil Samantha Gratland also achieved a UAL Performing Arts qualification with Distinctions she is now on a gap year before studying for a BA in Teaching.



Design Technology

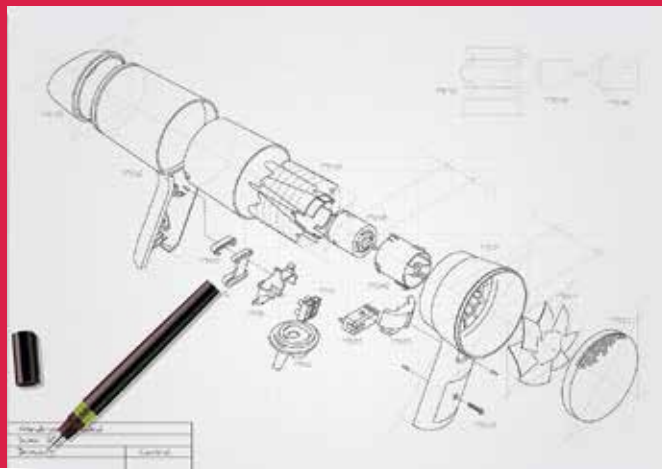
Our AS/A level Design and Technology specification provides a unique opportunity in the curriculum for learners to identify and solve real problems by designing and making products or systems.

NEW FOR 2022

WJEC AS Level Design and Technology – (Product Design) FT

ENTRY REQUIREMENTS GCSE C grade or above in English Language and Maths, and the minimum of a B grade in Design & Technology along with preferable combinations of or at least Product Design, Art or Engineering again at C grade or higher.

PROGRESSION This qualification provides a suitable foundation for the study of design and technology or a related area through a range of higher education courses or direct entry into employment. Typical career paths may include Product Design, Market Research, Architecture, Animation, Set Design, Automotive industry and many forms of Engineering Design.





Electrical Installation

The Electrical industry is a £23.6bn market so there is always a demand for electricians in the UK. Our level 1&2 qualifications are ideal for you if you are interested in a career in the electrical installations industry. It allows you to learn, develop and practice the skills required for employment and career progression.

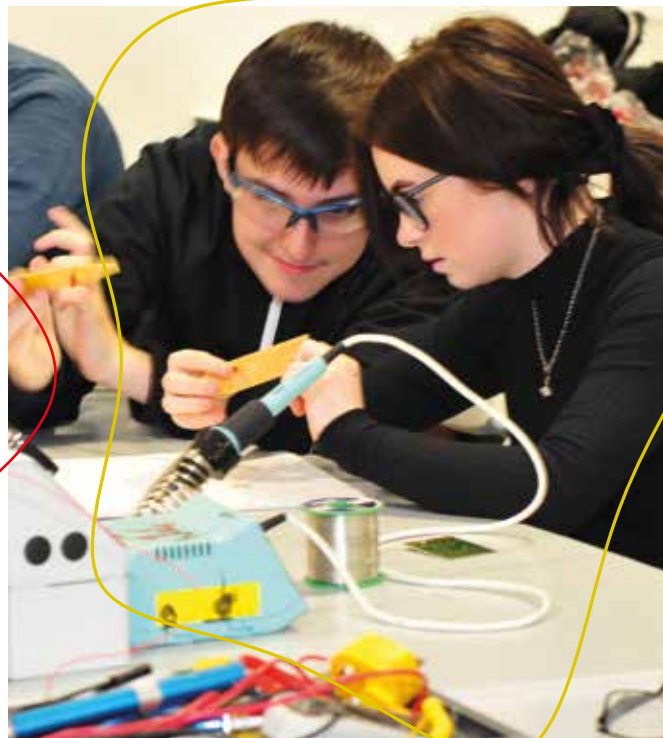
L1 Diploma Electrical Installation FT

ENTRY REQUIREMENTS 3 GCSE's grade D or above (including a D grade in Maths) or a suitable level 1 Electrical qualification. You must be able to demonstrate 90% attendance during your course of study.

L2 Diploma Electrical Installation FT

ENTRY REQUIREMENTS 4 GCSE's grade D or above (including both English and maths) or a suitable level 1 Electrical qualification. You must be able to demonstrate 90% attendance during your course of study.

PROGRESSION Although this qualification does not aim to make candidates fully qualified electricians it enables learners to develop and practice the skills required for a career in electrical installations or electrical engineering. It is suitable for those who want to progress onto an Electrotechnical Apprenticeship programme.



Engineering

Why choose to study Engineering with us? Fantastic facilities. Excellent partnerships and apprenticeship opportunities with local organisations e.g. General Dynamics. Excellent partnership with the University of South Wales and opportunities to engage in European work experience placements.

BTEC L3 National Certificate in Engineering FT A Level

ENTRY REQUIREMENTS 5 GCSE's grade A*-C to include Mathematics, English and successful interview demonstrating motivation and commitment to the programme.

EAL L1 Diploma in Performing Engineering Operations Multi Skills FT (Electrical installation and Engineering Pathway)

ENTRY REQUIREMENTS GCSE at D-G grades are required including Mathematics, English and Science.

EAL L2 Diploma in Engineering and Manufacturing Technology FT

ENTRY REQUIREMENTS Four GCSE's grade D or above (including Mathematics, English and Science), or an appropriate engineering qualification.

BTEC L3 Award in Advanced Manufacturing Engineering FT

ENTRY REQUIREMENTS 5 GCSE's grade A*-C to include Mathematics, English and successful interview demonstrating motivation and commitment to the programme.

BTEC L3 Certificate in Advanced Manufacturing Engineering FT Enhanced Programme

ENTRY REQUIREMENTS 5 GCSE's grade A*-C to include Mathematics, English and successful interview demonstrating motivation and commitment to the programme.

BTEC L3 Certificate in Advanced Manufacturing Engineering FT

ENTRY REQUIREMENTS 5 GCSE's grade A*-C to include Mathematics, English and successful interview demonstrating motivation and commitment to the programme.

PROGRESSION These courses are accepted as entry to many university courses, Industrial Apprenticeships or full-time employment.

Case Study

EVAN PRICE

Former Afon Taf High School pupil and Royal Academy of Engineering and Panasonic Trust Future Engineers Awardee Evan Price, achieved a B in History, C in maths and a distinction star in his Engineering course at the college. Commenting on his results and time at college, Evan stated "My time at college very enjoyable, even though we were all faced with certain circumstances due to COVID, the teachers made the lessons as well as my time there one to remember. I was not only supported by my subject teachers, but also a wide variety of other staff, including the Panasonic trust team. The bursary, as well as the opportunities provided, helped me boost my confidence within my engineering goals, providing me with resources to help myself, whilst furthering my understanding of the engineering world. My plans for the next few years is to study my Mechanical Engineering course at university, and hopefully gain a study year abroad."



English & ESOL

English for Speakers of Other Languages (ESOL) is taught at The College, offering learners the chance to begin or improve their English. Our ESOL courses focus on everyday English, communication, numeracy, computer skills, vocational and employability skills. Many of our learners progress to full-time or part-time courses at the college, including Business, Childcare and Sport. Some have progressed onto Foundation Degrees including Business & Photography as well as studying at University. As part of the global market our students are employed across the world, but some chose to reinvest their newly acquired skills and establish their own businesses in the Merthyr Tydfil Borough. ESOL also gives learners confidence to gain employment in a range of sectors, for example, as translators, teaching assistants, the police and supervisors in local factories.

WJEC AS/A2 Level English Literature

ENTRY REQUIREMENTS 5 GCSE's grade A* to C including English Language and Maths, with a grade C or above in English Language.

WJEC AS/A2 Level English Language & Literature

ENTRY REQUIREMENTS 5 GCSE's grade A* to C including English Language and Maths, with a grade C or above in English Language.

English for Speakers of Other Languages (ESOL) is taught at The College, offering learners the chance to begin or improve their English.

ENTRY REQUIREMENTS No formal entry requirements, Applicants are selected on interview.

Ascentis E3 Certificate in ESOL Skills for Life

Ascentis E2 Certificate in ESOL Skills for Life

Ascentis E1 Certificate in ESOL Skills for Life

Ascentis L1 Certificate in ESOL Skills for Life

Ascentis L2 Certificate in ESOL Skills for Life

PROGRESSION Many of our learners progress to full-time or part-time courses at the college, including Business, Childcare and Sport. Some have progressed onto Foundation Degrees including Business & Photography as well as studying at University.

Case Study

KAMILLA

Kamilla originally came from Brazil, but came to Wales with her husband in 2016. She began studying with us at Entry Level 2 in 2018-2019 and successfully completed. She left the course for a brief time to have her son. Kamilla decided she was ready to return to ESOL in 2020-2021, where she studied ESOL Entry 3 for the year totally online, while working part-time and looking after her son. She has continued on to ESOL Level 1 for 2021-2022 and hopes to continue to Level 2 next year. She wanted to study ESOL at the college because it was convenient for her; it offered class times that were in the day so she could still work and that the creche was also available for her son. She wants to keep studying to provide a good life for her family. She has made new friends on the course and feels more confident with day-to-day tasks.



Foundation Learning

ENTRY REQUIREMENTS All of our Foundation Learning courses require an interview with the teaching staff before acceptance onto the course. Progression between levels is not automatic.

Foundation Skills Social Development FT

Life Skills – Pathway 2

Skills Development – Pathway 2

BTEC E3 Award in Entry to Vocational Studies – Pathway 3

BTEC E3 Certificate in Entry to Vocational Studies – Pathway 3

BTEC E3 Extended Certificate to Vocational Studies – Pathway 3

PROGRESSION Following the successful completion of the course. You may be able to progress to a Level 1 course in other areas, or choose to move into work.

Case Study



MORGAN EVANS

My name is Morgan Evans and I have been a student at The College Merthyr Tydfil since September 2018. I started in ILS where I was able to build my confidence in my learning and in my social skills. I have moved onto a mainstream course studying IT since

September 2021 and I feel I am doing really well. The college has helped me a lot over the last few years to gain my confidence and to move onto the course I wanted to study.

I am now a member of the Learner Senedd and I am one of the Welsh Language Ambassadors for the college. The college has helped me greatly and I am very grateful for all the help and support I have received over the last few years.



Hairdressing & Beauty

From Level 1 through to Level 3, our hairdressing and beauty courses provide you with the opportunity to further develop your skills and enhance your career and employment prospects in the hair and beauty industry. All of our courses equip learners for the world of work by providing the opportunity for them to work within a realistic working environment whereby they are required to develop key employability skills.

ENTRY REQUIREMENTS Applicants are selected on interview. Good literacy skills are required. L2 or equivalent needed to progress to L3. There is no automatic progression between levels.

VTCT L1 Diploma Hairdressing FT

VTCT L2 Diploma Hairdressing FT

VTCT L2 Diploma Hairdressing FT Evening

VTCT L3 Diploma Hairdressing FT

VTCT L2 Certificate Barbering PT Pending

VTCT L3 Certificate Barbering PT

VTCT L1 Diploma in Beauty Therapy FT

VTCT L2 Diploma in Beauty Specialist Techniques FT

VTCT L3 Diploma in Beauty Therapy Treatments FT

PROGRESSION These qualifications may lead to apprenticeships or employment in the industry.



Case Study

HELEN MORGAN



MAT learner Helen successfully completed both Level 2 and 3 hairdressing course and has now progressed onto Barbering.

Helen left her long-term career in the care sector to fulfil her dream of becoming a qualified Hair stylist. Helen presented excellent skills throughout her course and achieved 1st place in both level 3 competitions in Cutting/colouring and Avant Garde. At the end of her level 3 Helen was presented with an award in vocational excellence for her exceptional performance throughout the course.

Health & Social Care

Our Health and Care courses offer an excellent route into working within an education or health and social care setting alongside the opportunity to progress to HE courses.

Agored Cymru L1 Diploma in Introduction to Health and Social Care - Early Years and Childcare

ENTRY REQUIREMENTS GCSE's grade D-E.

City and Guilds/WJEC L2 Health and Social Care Core Principles and Contexts

ENTRY REQUIREMENTS At least 4 GCSE's grade A*-D including C grade in English language and or/C in Maths and Science and a formal interview.

City and Guilds/WJEC L3 Certificate Health and Social Care

ENTRY REQUIREMENTS Entry onto this course is by interview and requires at least five GCSE's grade A*-C including Mathematics, English and Science.

PROGRESSION Learners could progress to higher education courses in areas including: Midwifery, Police studies, Speech and language therapy, Psychology, Occupational health, Social work and Nursing. Additionally, the FD Health and Social Care Management course that we offer here at the college.

Case Studies

JESSICA DAVIES

Former Brynmawr School Learner Jessica Davies received a distinction on the BTEC Level 3 Health and Social Care course. She has been successful attaining a Bursary place on Adult Nursing at the University of South Wales.



LIBBY JOSLIN FORD

Former Afon Taf High School Learner Libby Joslin Ford achieved a distinction on the Level 3 Health and Social Care. She has been successful in securing a place on the Community Health and Wellbeing Degree course at the University of South Wales.



Humanities, Social Sciences & Languages

Our Humanities and Languages division provides a wide range of courses, including History, Geography, English Language and Literature, Welsh, French and Modern European Languages.

WJEC AS/A2 Level Law

ENTRY REQUIREMENTS 5 GCSE's grade A*-C, including a B grade or above in GCSE English.

WJEC AS/A2 Level Criminology

ENTRY REQUIREMENTS You will require 5 GCSE's grade A*-C including English.

WJEC AS/A2 Level History

ENTRY REQUIREMENTS A minimum of 5 GCSE's grade A*-C, with preferably a B grade in History or English.

WJEC AS/A2 Level Religious Studies

ENTRY REQUIREMENTS 5 GCSE's grade A*-C including English Language. A grade B or above in English Language would be highly desirable.

AQA AS Level Philosophy

ENTRY REQUIREMENTS B grade or above in GCSE English Language.

WJEC AS/A2 Level Cymraeg Ail Iaith

ENTRY REQUIREMENTS 5 GCSE's grade A*-C including Welsh C grade or above in English Language plus a B grade in GCSE full course Welsh or an A grade in short course Welsh.

WJEC AS Level French

ENTRY REQUIREMENTS C grade or above in GCSE French and English Language.

WJEC AS/A2 Level Psychology

ENTRY REQUIREMENTS 5 GCSE's at grades A*-C including a grade B or above in English Language or literature and a grade C in Mathematics is desirable.



WJEC AS/A2 Level Geography

ENTRY REQUIREMENTS 5 GCSE's grade A*-C including English language, Maths and Science. GCSE Geography is desirable but not essential however, this is at the discretion of the tutor. If GCSE Geography has been studied at GCSE a C grade or above is required.

WJEC AS/A2 Level Government and Politics

ENTRY REQUIREMENTS A minimum of 5 GCSE's grade A*-C with a B grade in History or English.

WJEC AS/A2 Level Sociology

ENTRY REQUIREMENTS 5 GCSE's grade A*-C including a grade B or above in English Language or English Literature. You do not need to have taken sociology at GCSE.

PROGRESSION Successful completing of any of these A levels subjects can help you progress onto a wide variety of university level courses.

Case Studies

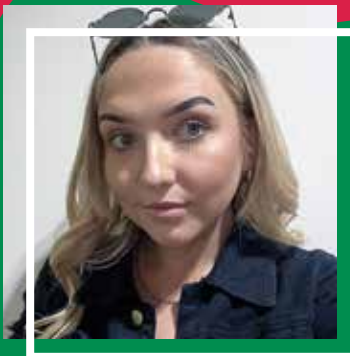
SOPHIE HARVARD

Past Afon Taf High School pupil Sophie Harvard achieved 3 A*s in History, English Literature and Drama and has now progressed on to Cardiff University to study Journalism, Media and Culture. Commenting on her time at college, Sophie said “Merthyr College has provided me with the opportunity to focus on not only the subjects that I’m passionate about but the subjects that will be relevant to my future career prospects. I’ve really enjoyed my time at the college and I believe that my experiences there will be beneficial to my next steps in the future.”



LOUISE ISAAC

Afon Taf pupil, Louise Isaac. Louise achieved an A in Government and Politics, an A in Business and a B in History. Louise, who has now progressed on to study Business Management at Cardiff University, commented “I was completely star struck at what I was still able to achieve over these past two unique years of my life. I was overwhelmed and amazed to find out that I would be going to my dream university, after worrying if I would obtain the required grades. I can’t thank my tutors and the collage enough for their continued support throughout. I’m so excited to begin the next chapter.”



HOLLIE MORGAN

AS learner and past Idris Davies pupil Hollie Morgan achieved 4 As in Sociology, Law, History and Psychology. Hollie, who is currently the chair of our Learner Senedd, commented “Since joining the college in September 2020, I have found it to be a welcoming, inclusive and nurturing environment to learn in. The staff at the college have provided both academic and well-being support to all students throughout the challenges of the last academic year. I am really enjoying my second year at college and hope to progress on to study Law at university in September 2022”.



Motor Vehicle Technology

The IMI is the professional body for people employed or seeking employment in the motor industry. As the leading awarding body for the retail motor industry, the IMI offers a range of Vocationally Related Qualifications (VRQs), Vocationally Competent Qualifications (VCQs) or Diplomas. These courses are able to deliver the widest range of technical knowledge, which is necessary in order to become a skilled motor vehicle technician, master technician or allow progression to higher education. There is a qualification suited to all levels of applicants from Entry Level right through to Level 3 technician courses.

CG E3 Diploma in Vehicle Systems Maintenance FT

ENTRY REQUIREMENTS This course is aimed at school leavers who have few academic qualifications (subject to interview).

CG L1 Diploma Vehicle Systems FT

ENTRY REQUIREMENTS GCSE grades D-F in English, Mathematics and a Science based subject.

IMIAL L2 Diploma in Light Vehicle Maintenance and Repair Principles FT

ENTRY REQUIREMENTS 4 GCSE grade A*-D or above preferably in Mathematics, English and Science or level 1 Motor Vehicle qualification.

IMIAL L2 Diploma in Vehicle Fitting Principles

ENTRY REQUIREMENTS Three GCSE's grade C or above preferably in Mathematics, English and Science or level 1 Motor Vehicle qualification.

IMIAL L3 Diploma in Light Vehicle Maintenance and Repair Principles FT

ENTRY REQUIREMENTS Successful completion of an appropriate Level 2 qualification in Vehicle Technology.

PROGRESSION Learners may progress into apprenticeship or full-time employment.

NEW FOR 2022 we're working in partnership with Aston Martin



Science & Mathematics

An A Level or BTEC qualification in Science, Technology, Engineering or Mathematics will provide you with a stepping stone on to many different career paths. There are countless opportunities in many fields, all of which make a positive difference to people's lives.

WJEC AS/A2 Level Biology

ENTRY REQUIREMENTS Minimum of 5 GCSE's grade A-C including at least a B grade in both Mathematics and English, BB in double award science or BBB triple science.

WJEC AS/A2 Level Chemistry

ENTRY REQUIREMENTS Minimum of 5 GCSE's grade A-C including at least a B grade in Mathematics (usually Higher Tier), BB in double award science or BBB triple science.

WJEC AS/A2 Level Physics

ENTRY REQUIREMENTS Minimum of 5 GCSE's grade A-C including at least a B grade in Mathematics (usually Higher Tier), BB in double award science or BBB triple science.

WJEC AS/A2 Level Mathematics

ENTRY REQUIREMENTS Minimum of 8 A*-C grades including a minimum of an A in GCSE Mathematics.

WJEC AS/A2 Level Further Mathematics

ENTRY REQUIREMENTS Minimum of 8 A*-C grade including a minimum of an A in GCSE Mathematics.

WJEC AS/A2 Level Certificate in Medical Science

ENTRY REQUIREMENTS Minimum of 5 GCSE's grade A-C, including at least a C in Mathematics, English and Science.

BTEC L3 National Certificate in Applied Science A Level

ENTRY REQUIREMENTS Minimum of 5 GCSE's grade A-C, including at least a C in Mathematics, English and Science

PROGRESSION Successful completing of any of these A levels subjects can help you progress onto a wide variety of university level courses.



Case Studies

NADIA MARSHALL



Nadia Marshall, former Lewis School pupil, achieved an outstanding 4 A*s in Maths, Biology, Chemistry and Physics and is now taking a gap year prior to going on to study medicine at university.

Commenting on her experience at college, Nadia stated "I loved my time at college. My course tutors have been amazing and always motivate me to work hard."

Nadia's parents, who were thrilled with her results, commented "We are so glad our daughter Nadia decided to take her A Levels at Merthyr College. The support and encouragement she has received has been outstanding."

FABIO TOMASI



Fabio Tomasi, past Bishop Hedley pupil, achieved an A* in maths, A in Biology, A in Chemistry and a B in Physics. Fabio has successfully gained a place to study Neuroscience at Kings College London, commenting "During this last year, because of Covid-19, we weren't able to do many

things as we normally would, but the teachers put a lot of effort in the lessons, both online and face to face, making up for that. I feel really grateful and blessed to have chosen to come to the College."

SOPHIE THOMAS

Past Afon Taf High School pupil, Sophie Thomas achieved a D*D*D* on her BTEC Applied Science course and has successfully achieved the results she needs to progress on to study Genetics and Bio-Chemistry at Aberystwyth University. Commenting on her results, Sophie paid tribute to the teaching provided at the college "The last year has been difficult for everyone; I feel lucky to have still been provided with great teaching by my course tutors that has made it possible for me, and others, to gain the results we needed to go on to study and do what we want to next."



CRIS DIGNADICE

Cris Dignadice, also a former Bishop Hedley pupil and STEM learner at the college, achieved an A* in Physics and an A* in Further Maths. Cris who is one of the college's MAT learners was also fortunate to gain a place on the Stanford University Artificial Intelligence Summer School, commenting "My college tutors supported me to successfully gain a place on the Artificial Intelligence Programme at Stanford University. I have been so grateful to have the opportunity to participate in this programme where I've been able to learn and express myself in a field which will potentially have a big impact in our future."



Sport

The sports sector has been growing for many years and the rate of growth is as high as ever. Jobs exist in coaching, administration and management, fitness advice and Sports Science. Our comprehensive range of courses combined with our fantastic reputation for sporting excellence and our commitment to providing outstanding sporting opportunities will ensure that you receive the best possible sporting education with us.

BTEC L3 Subsidiary Diploma Sport FT A level

ENTRY REQUIREMENTS 5 GCSE's grade A*-C including English and Maths.

BTEC L3 National Extended Certificate in Sport and Fitness FT A Level

ENTRY REQUIREMENTS 5 GCSE's grades A*-C including English and Maths.

BTEC L2 First Extended Certificate in Sport FT

ENTRY REQUIREMENTS 4 GCSE's grade A*-D are desirable.

BTEC L3 Foundation Diploma in Sports Coaching & Development

ENTRY REQUIREMENTS Interviews required, Minimum of 5 GCSE's grade A*-C.

BTEC Level 3 National Extended Certificate in Sport and Exercise Science

ENTRY REQUIREMENTS Minimum of 5 GCSE's grade A*-C including Maths and English.

PLA L2 Fitness Instructor

ENTRY REQUIREMENTS Interest in Exercise and Fitness, Gym Experience.

L3 Personal Trainer

ENTRY REQUIREMENTS Applicants need to have completed L2 Fitness Instructor course.

PROGRESSION These courses provide the knowledge, understanding and skills for students wishing to study Sports related Foundation degrees or degrees, or those seeking full time employment in the Sports sector.

Case Study

MACKENZIE THOMAS

BTEC Level 3 Sports learner and past Cyfarthfa High School pupil, Mackenzie Thomas, achieved a triple distinction star.

Commenting on his results, Mackenzie said "The course has enabled me to develop the skills and knowledge to progress on to a sports journalism course at the University of South Wales.

It's also helped me in my coaching role at Cardiff City FC, Merthyr Town and the FAW Trust."



Public Services and Outdoor Adventure

These courses are designed for students who wish to pursue a career in the uniformed services. They provide the skills and knowledge relevant to employment in the police, fire, prison and armed services. There will be a good variety of activities and experiences provided by the Police, Army, Navy, RAF, Fire Service and Youth Service. These activities will give you a better understanding of the work they do and what it would be like to be a part of their organisation. You will also have access to The University of South Wales Hydra Minerva Suite to experience managing major incidents.

BTEC L2 Diploma in Preparation for Public Services

ENTRY REQUIREMENTS Students must have a desire to work in the public services. 4 GCSE's grade A*-D are desirable.

BTEC L3 National Foundation Diploma in Uniformed Protective Services FT

ENTRY REQUIREMENTS Entry is by interview: Minimum of 5 GCSE's grade A*-C.

PROGRESSION The courses provide the knowledge, understanding and skills for students wishing to enter a career in the public services or armed forces. Many students successfully progress on to university to study Criminology, Public Services, Youth Work or Police Studies or progress directly into the Uniformed Public Services.



Case Study

TOM MORAN

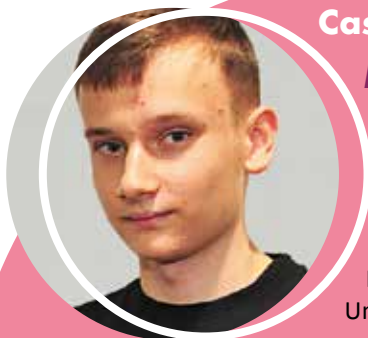
Tom Moran, a former Bishop Hedley Catholic High School pupil, who has additional learning needs, achieved a Merit Pass on the first year of his BTEC Level 3 Public Services course. Tom commented "My time in college has been great so far I have had access to learning support which has been a great opportunity for me to thrive in my academic skills."

Commenting on his experience at college. Tom's mother Rhian Moran, stated "The College has supported my child with his learning needs to allow him to achieve his goal of achieving his Level 3 Public Services and his GCSE re-sits."

Case Study

MACIEJ ZATORSKI

Former Bishop Hedley pupil Maciej Zatorski scooped up a triple distinction star in Public Services. Maciej has now progressed on to study Professional Policing at the University of South Wales.



Travel & Tourism

Want to travel the world and be a part of a vibrant exciting industry? Travel and Tourism is one of the fastest growing sectors in the UK and abroad, with this industry offering you exciting and fulfilling career opportunities.

BTEC L2 Extended Certificate in Travel and Tourism FT

ENTRY REQUIREMENTS 4 GCSE A*-D grade.

BTEC L3 National Foundation Diploma Travel and Tourism FT

ENTRY REQUIREMENTS Applicants are expected to possess a minimum of 5 GCSE passes at A*-C grades including English Language and Maths or equivalent.

PROGRESSION Successful completion of these courses will enable you to progress onto the colleges Foundation Degree in Business or a travel related degree at another Higher Education institution or directly into employment in the travel, hospitality or leisure industry.



Case Study

ETHAN SCRIVEN

Ethan achieved excellent results after their first year of study on the course. Commenting on his experience and the course, Ethan stated "The support I have had since being in college has been overwhelming, especially over the last 13 months. Any worries or issues I have had, I always had a member of staff to help. My plans for the next year will be staying on for my second year of Travel and tourism. After this I would really like to work within the tourism industry abroad."



Access to HE

Access courses are designed for those with life experience, which means they are usually suitable for those over 19 years of age.

Agored L2 Diploma in Skills for Further Study FT

ENTRY REQUIREMENTS No formal qualifications are required. All prospective students are interviewed and assessed prior to being offered a place.

Agored L3 Access to Higher Education Diploma Healthcare FT

ENTRY REQUIREMENTS There are no formal entry requirements, we give full individual and careful consideration to every application. We also expect to see good interpersonal skills, commitment to the area of study and enthusiasm and understanding of your chosen career route.

PROGRESSION Successful completion of these courses will enable learners to progress successfully on to a relevant degree course and then into a career such as: Nursing, Midwifery, Operating Department Practitioner, Social Work, Occupational Health, Podiatry, Radiography.

Agored L3 Access to Higher Education Diploma Humanities FT

ENTRY REQUIREMENTS There are no formal entry requirements, all prospective students are interviewed and assessed prior to being offered a place.

PROGRESSION On successfully completing the course, students achieve the Access to HE Diploma qualification. This is a nationally recognised qualification that is accepted for entry into Higher Education courses.

Case Study

ZOE DRINKWATER

I have really enjoyed studying at Merthyr College. I have had endless support from peers, my lecturers and other members of staff when I needed them. And throughout my time the support I received from I2A has been amazing. It was always comforting to know someone was there for me to talk to when I needed help.

Doing the Access to Humanities and Social Sciences Course was the best choice of my life. Everyone in my class and my lecturers were kind and supportive and I don't think I would've gotten the results I did if it wasn't for my lecturers. I have been accepted to Swansea University to study History and I also achieved a Merit Scholarship due to my results.



HE Courses

The College Merthyr Tydfil has a unique partnership with the University of South Wales to provide a comprehensive range of Higher Education courses on your doorstep! This ground breaking initiative provides you with the opportunity to study at your local College Merthyr Tydfil and gain a qualification awarded by the University of South Wales.

Foundation Degree Health & Social Care Management FT

ENTRY REQUIREMENTS Two A Levels, AVCE, BTEC National Certificate or Diploma In appropriate subjects. Mature applicants may be accepted without qualifications following interview and satisfactory reference.

Foundation Degree Childhood Studies FT

ENTRY REQUIREMENTS BTEC National Diploma/Certificate in childhood studies/early years NNEB/CACHE diploma in childcare & education. Two A Levels in related subjects. Acceptance is also dependent on interview, references and an enhanced criminal records bureau enquiry.

Foundation Degree Art Practice FT

ENTRY REQUIREMENTS If you can show portfolio evidence of an interest in art or other relevant skills or prior learning, you will not require formal qualifications but will be invited to attend an interview.

BA Hons Degree Art Practice FT

ENTRY REQUIREMENTS Completion of Foundation Degree or completion to level 5 in Art or similar discipline.

Foundation Degree Business Management

ENTRY REQUIREMENTS All learners under 21 must obtain a level 3 BTEC qualifications or two A Levels. 21 and over will be subject to interview.

BA (Hons) Degree Business Studies FT/PT

ENTRY REQUIREMENTS Achieved an FD but not necessarily in Business.

Foundation Degree Photography FT

ENTRY REQUIREMENTS If you can show portfolio evidence of an interest in photography or other relevant skills or prior learning, you will not require formal qualifications but will be invited to attend an interview.

Foundation Degree Psychology FT

ENTRY REQUIREMENTS You will normally have to have one of the following: 1. BTEC vocational qualification at level 3 in an appropriate area 2. At least an A Level pass in an appropriate area 3. An alternative level 3 qualification in an appropriate area or 4. Mature applicant.

HND in Computing FT

ENTRY REQUIREMENTS A BTEC National Diploma in a relevant subject or Two Advanced level subjects, at least one in a relevant subject Students should also have at least four GCSE's including mathematics at grade C and above. Mature students are welcome on the course, we consider accreditation of prior learning, work-based learning and candidates career aspirations.

Foundation Degree in Esports FT

ENTRY REQUIREMENTS A BTEC National Extended Diploma in a relevant subject or Two Advanced level subjects, at least one in a relevant subject. Mature students are welcome on the course, we consider accreditation of prior learning, work-based learning and candidates career aspirations.

Professional Graduate Certificate in Education (PGCE) PT

ENTRY REQUIREMENTS Available for both graduates and non-graduates. Maths and English Language GCSE grade C or above are desirable. DBS check required.



Panasonic Trust Future Engineers Award

The college is working in partnership with the Royal Academy of Engineering and Panasonic Trust to take forward 'The Welsh Valleys Engineering Partnership Project', an initiative designed to establish a support programme in the Blaenau Gwent area to embed sustainable, systemic change in engineering education in South Wales and to encourage greater number of young people in the region to study STEM subjects and equip them for possible careers as engineers and technicians. As part of this project, we are offering 10 bursaries of £2000 each for learners coming from the Merthyr Tydfil schools who are wishing to progress onto a career in Engineering and are opting to study subjects that will help them to pursue this career.

Applications for the Bursaries open at the end of January each year. Your STEM teachers in school will let you know when they are available and support you to complete your application.

For further details on the bursary, please contact Shelby Berry on s.berry@merthyr.ac.uk

Panasonic



Next Steps

Step 1 – Identify the right course for you

Check out our broad range of courses and subject areas available at the college and find out as much as you can about them through:

- › Our prospectus.
- › Website – www.merthyr.ac.uk
- › Visiting open evenings.
- › School based information events.
- › Careers Adviser.
- › Telephone one of our Admissions team on 01685 726012.
- › Email admissions@merthyr.ac.uk

Step 2 – Make an application

Head over to our Website – www.merthyr.ac.uk and choose the course you are interested in and then click on the Apply Now button. If you are applying for A levels, you just need to click on your first choice and then it will give you the option of adding the rest of your courses at the end of your application process.

Step 3 – Interview and WEST assessment

You will be invited for an interview to discuss which course you are best suited to. We will also ask you to complete an initial assessment for numeracy and literacy.

Step 4 – Your course offer

You will receive an email, text or letter offering you a place on your chosen course(s) or the opportunity to discuss alternative options with our Admissions team. We will ask you to confirm your acceptance of the offer by email or telephone.

Step 5 – Enrolling at the college

You will be sent a welcome pack with details of how to enrol at the college. Our finance team will provide you with the information you need to apply for any additional grants to support you during your studies.

Additional Learning Support

During the application process, you will be encouraged to disclose and Additional Learning Needs and/or disabilities so we can offer effective support. The college additional learning needs coordinator (ALNCo) can provide advice and support to learners, parents, carers/guardians and members of staff.

Once an offer is made and/or accepted the college will ascertain any learning support currently being offered so that the college can prepare support in advance of you being enrolled.

The ALNCo will assess your support requirements for interview and on program. Disclosures that you made on your application at interview or at enrolment will all be passed on to the ALNCo.

A confidential interview can be requested if you would prefer to discuss any Additional learning needs and/or disabilities. You may choose to bring an advocate to the meeting if you wish to do so.

Please contact:

Rhian Francis

Telephone: **01685 726029**

Email: rfrancis@merthyr.ac.uk