

WELCOME TO THE COLLEGE MERTHYR TYDFIL



PARENTAL INFORMATION EVENING



OUR COLLEGE



- Further Education
- A levels
- Part-time
- Foundation and BA Hons Degrees
- Professional Qualifications
- Personal Learning Accounts

- Jobs Growth Wales
- Apprenticeships
- SPF Funded projects
- Personal Learning Accounts
- MTEC – Enterprise support
- Restart- Employability

- Degrees
- Higher Degree Apprenticeships
- Professional qualifications
- Research
- Commercial Services
- First Campus projects

OUR COMMITMENT TO LEARNERS

- Responsive and relevant curriculum aligned to the needs of regional employers and the wider community
- Inspirational, inclusive learning experience that is fully supported by the innovative use of digital technology
- A culture of curiosity, collaboration and challenge.
- Learning, teaching and assessment that is creative and engaging, enabling all learners to achieve the best possible outcomes.
- A welcoming, safe, inclusive and supportive environment for learners to thrive, work and study
- Outstanding mental health, wellbeing and additional learning needs support
- Help to develop skills in literacy, numeracy, digital literacy and the Welsh language to support learner's wider learning.
- Support to prepare them for their next steps and progression to higher education, employment, training or apprenticeships.
- Comprehensive enrichment programme, including international trips and visits



OUR COMMITMENT TO PARENTS

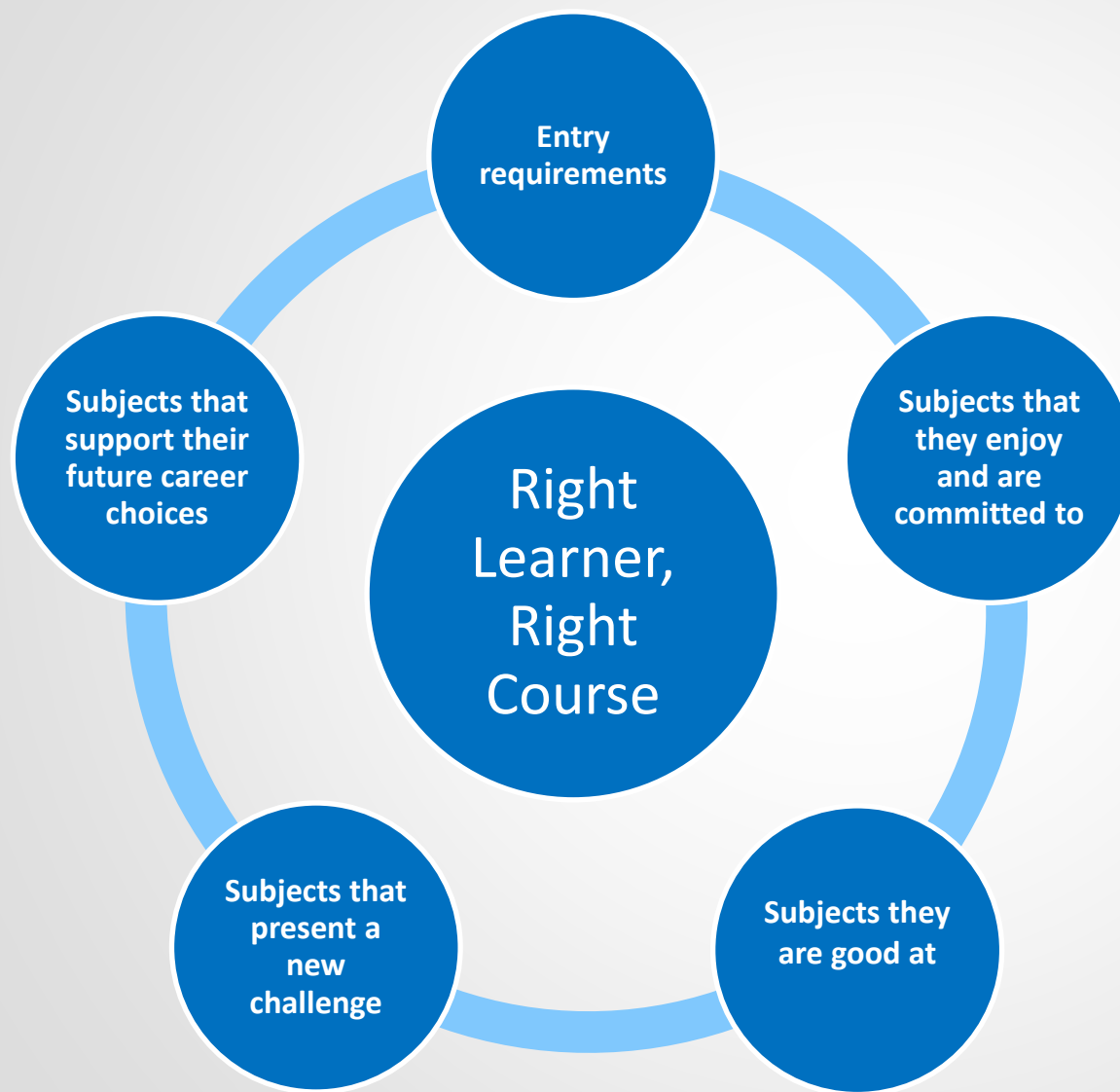
- Meet and Greet session prior to enrolment
- Information, advice and guidance to help you support your child to pick the right course for them and ensure that they have all of the support they need at college
- Continual information and engagement in relation to attendance, academic progress and learner support
- Twice yearly progress reports
- Twice yearly parents/carers evening



Past Cyfarthfa pupil and MAT learner Harri Latewood is studying A levels in Physics, Maths, Further Maths and Computer Science.

His mum Tracy, commented "The support Harri has received at the college has been absolutely fantastic. He has had so many opportunities to engage in additional activities to enhance his studies, including the Brilliant Club and Seren. As a parent I am constantly kept updated on his progress through the parents' evenings and regular progress reports."





Think about



- Future jobs/careers they would like to progress into
- The GCSE subjects they are currently studying and enjoy
- Their predicted outcomes and how these compare to the entry requirements for the course
- The way in which they learn best

A LEVELS OR VOCATIONAL COURSES???

Vocational Courses	A levels
<p>More vocational and practical e.g.</p> <p>BTEC Business</p> <p>BTEC Engineering</p> <p>UAL Games Design</p> <p>WJEC Health and Social Care</p> <p>VTCT Hairdressing</p>	<p>More traditional subjects e.g. English, Maths, History, Biology, Chemistry etc.</p>
<p>Continually assessed throughout the year. Suited to those who prefer practical based coursework and know the career they want to progress into</p>	<p>Geared towards AS and A2 examinations. Suited to those who wish to study a variety of subjects</p>
<p>Often awarded with Pass, Merit or Distinction</p>	<p>A Levels are graded A*-E.</p>

Did you know??

Vocational courses are also widely accepted as entry points into higher education.



Y Coleg
Merthyr Tudful
The College
Merthyr Tydfil



Manchester
Metropolitan
University

Physiotherapy



University of the
West of England

Diagnostic
Radiography



Biomedical
Sciences



BTEC

Level 3 Applied Science

University offers



LIVERPOOL
JOHN MOORES
UNIVERSITY

Pharmacy with
Foundation Year



PRIFYSGOL
ABERYSTWYTH
UNIVERSITY

Genetics/Biochemistry



University of
BRISTOL

Veterinary Nursing and
Companion
Animal Behaviour

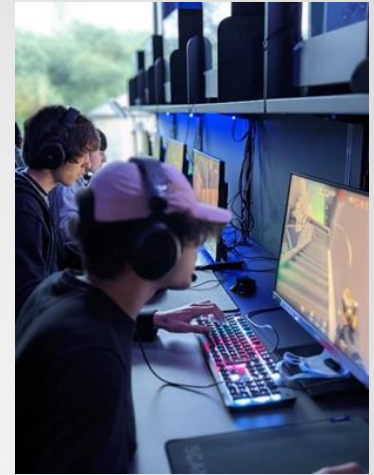
TEACHING AND LIFE AT COLLEGE – WHAT CAN YOUR CHILD EXPECT?

A Levels

- 5 hours teaching per subject plus Welsh Bac
- Typical 2 hour lesson blocks

Vocational

- 16 hours per course, including tutorial, Welsh Bac, GCSE Re-sits



Encouraged to study independently around their timetable



LEARNER BEHAVIOUR AND EXPECTATIONS

- Abide by the college's policy on achieving a minimum of 90% attendance
- Attend all lessons on punctually and on time
- Be ready and willing to learn
- Engage in lessons and take account of feedback from staff
- Complete assignment work by required deadlines
- Engage in the support provided
- Be respectful at all times
- Adhere to the college's policy on No Vaping and Smoking on or immediately outside of the college's premises

NOTE:

- EMA and Scholarship/Bursary agreements include achieving a minimum of 90% attendance
- Abiding by the college's Learner Behaviour Policy



SUPPORT FOR ALN AND VULNERABLE LEARNERS

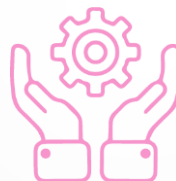
- Additional Learning Needs Support
- Medical conditions
- Extra time for exams
- In-class support
- I2A Support
- Mental Health
- Learner Wellbeing and enrichment
- Safeguarding

CASE STUDY

Merthyr Tydfil Pride Event

The College Merthyr Tydfil learners worked in partnership with local community groups to host the first ever Merthyr Tydfil Pride Event.

The opportunity to be involved in the organisation of the first ever Pride festival for Merthyr Tydfil helped the college's LGBTQ+ learners to have a real input and involvement in a key community event, develop their leadership skills and support one of the college's key strategic priorities to 'provide a safe, supportive and inclusive environment for all'.

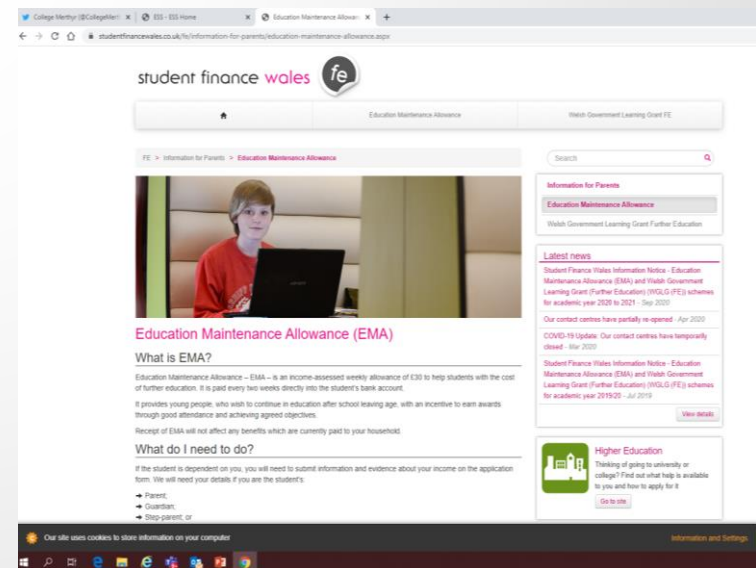


FINANCIAL SUPPORT

- Educational Maintenance Allowance (EMA)
- Financial Contingency Fund to help with the cost of kit, equipment, books, transport and trips
- Period Poverty
- Free school meals



<https://www.studentfinancewales.co.uk/fe/information-for-parents/education-maintenance-allowance.aspx>



SCHOLARSHIPS AND BURSARIES

- Academic Excellence Scholarship (Predicated to achieve 7 or more A*-A grades in their GCSEs) - £1,000
- Sporting Academy scholarships
- Dedicated year 11 awards - £500
 - Inspirational Learner of the Year Award
 - Sporting Excellence Award
 - Vocational Excellence Award



TRAVEL TO COLLEGE

- College operated bus from **Bedlinog** up to the college at 8am each morning and leaving the college at 4pm each day
- College operated bus from **Brecon** down to the college at 8am each morning and leaving the college at 4pm each day
- *Currently considering operating a bus from Rhymney and Tredegar*
- Learners living in Merthyr Tydfil who live 3 miles or more away from the college can apply for a bus or train pass
- Learners living outside of Merthyr Tydfil need to apply to their local authority
- Finance and Travel team here this evening to provide further information on this

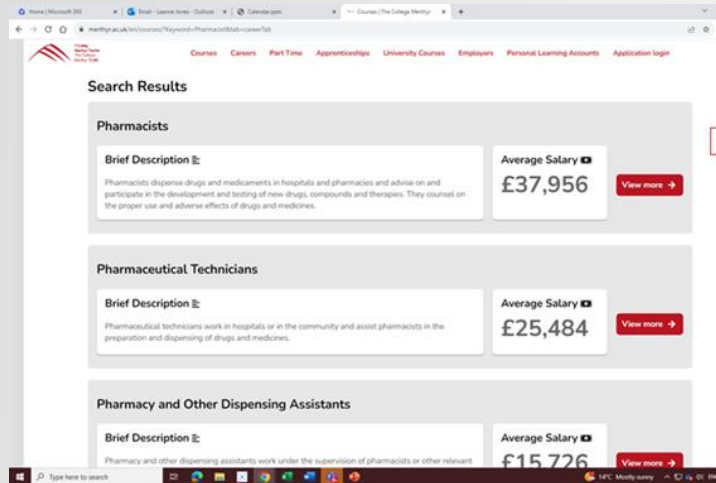
SUPPORT FOR MORE ABLE AND TALENTED LEARNERS

- Academic Excellence Scholarship (7A*-A grades) - £1,000 paid in termly instalments
- Dedicated Tutorial group for MAT learners
- Personal tuition and guidance
- Opportunity to study 4 A level subject areas (Welsh Baccalaureate optional)
- 5 hours teaching on each full A level programme
- Opportunity to join the Seren Network (6A* or more grades)
- Sports Academy – for top performing sports learners
- 'Future Pathways' Employability Programme/Industry Experience
- Dedicated UCAS Advice and Guidance
- Opportunity to participate in Welsh and UK Skills Competitions

THE
SEREN
NETWORK



SUPPORTING TRANSITION FROM SCHOOL TO COLLEGE



- Attendance at year 11 assemblies
- Subject Talks
- College open evenings
- Career Search on college Website
- Attendance at school-based parents/carers evenings
- College tours
- Advice and guidance sessions throughout the year
- School based 'Get Ready for College' Hub and sessions throughout the year
- Get Ready for College Summer Programme
- GCSE Day Advice and Guidance
- College Website
- Talk to learners



GET READY 
FOR COLLEGE...

Discover TCMT... 

Explore course options,
apply and gain an
insight into student life.

We will be at your
school on:

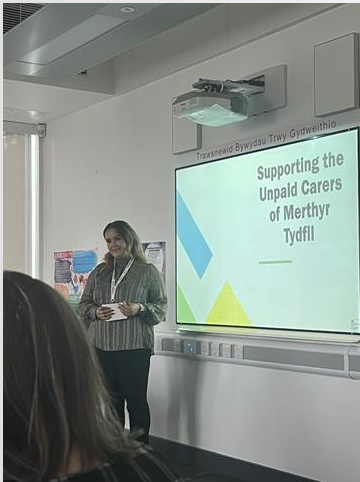
- 7th November 3-4pm
- 5th December 3-4pm
- 9th January 3-4pm
- 6th February 3-4pm
- 6th March 3-4pm

Y Coleg Merthyr Tudful
The College Merthyr Tydfil

TRANSITION SUPPORT FOR ALN AND VULNERABLE LEARNERS

- Transition meetings to discuss IDP's
- Parent Information Events and transition meetings
- Dedicated Transition programme operated in partnership with Greenfield Secondary School
- Quiet hour at start of every open evening
- Dedicated sessions for learners with ASD etc. to come in during the summer period
- Art and Soul Summer Transition Programme for learners struggling with their mental health and/or emotional wellbeing



Transition programmes enable learners to:

- **Feel safe and supported during a period of huge change**
- **Experience authentic college sessions**
- **Participate in the wider college community**
- **Gain a greater understanding of learner's ability and need**
- **Develop, share and enhance ALN practice alongside the partner school**



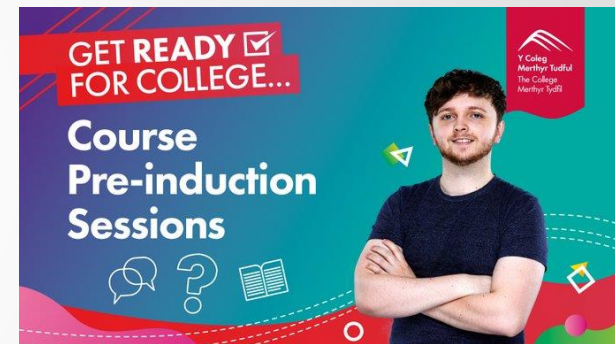
SUPPORT FOR WELSH MEDIUM LEARNERS

- Dedicated Welsh medium taster sessions
- Dedicated 'Meet and Greet' sessions for learners transitioning from Welsh medium schools
- Dedicated team of Welsh Ambassadors
- Welsh Team available throughout enrolment and induction to support learners
- Translation guides and bespoke 1:1 help, advice and guidance



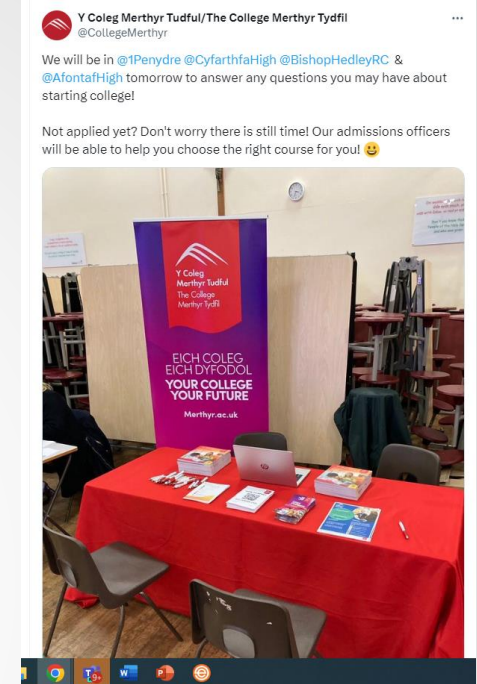
GET READY FOR COLLEGE – SUMMER TRANSITION PROGRAMME

- Pre-induction sessions
- Subject meet and greet
- Specific sessions around finance, learner support
- Learner resilience, study skills and mental health and wellbeing support
- Liaison with Lead Workers to support learners to attend
- Liaison with TTC Summer School
- Course Advice and Guidance



GCSE RESULTS DAY – ADVICE AND GUIDANCE

- Member of College Admissions Team at each school on GCSE Results morning
- Subject staff available at the college throughout GCSE Results Day for advice and guidance
- Advice and guidance day on the Friday after GCSE Results Day
- Liaison with schools to share GCSE Results and help confirm places
- Liaison with Lead Workers to support learners who may still be unsure of next steps or wish to change their course
- Liaison with Lead Workers on enrolment days and times



What if:

- My child doesn't receive the grades they need to enrol on to the course?
- My child has changed their mind on the course they want to study and would like to swap to a different course?
- My child no longer wants to study the course they have been given an offer on and they are really undecided about what they want to do?

PLEASE DON'T WORRY!!!

FINALLY!!

PLEASE REMEMBER WE ARE HERE TO SUPPORT!

**REMEMBER - WE'RE HERE
TO PROVIDE HELP, ADVICE,
GUIDANCE AND SUPPORT!**



**Y Coleg
Merthyr Tudful**
The College
Merthyr Tydfil



01685 726000



admissions@merthyr.ac.uk



Message us at any time via social media!



@CollegeMerthyr



@collegemerthyrtudfil



**The College
Merthyr Tydfil**

