

# A Levels & Further Education Courses 2024-2025



Y Coleg  
Merthyr Tudful  
The College  
Merthyr Tydfil

**YOUR COLLEGE  
YOUR CHOICE  
YOUR FUTURE**

University of  
South Wales  
Prifysgol  
De Cymru

Mae'r Coleg Merthyr Tudful yn  
rhan o Grwp Prifysgol De Cymru  
The College Merthyr Tydfil is part of  
the University of South Wales Group

# Contents

- 3 Welcome
- 4 Why Choose Us?
- 5 Our Class of 2023 – Success Stories
- 6 Outstanding Learner and Pastoral Support
- 7 Learning Zone
- 7 Information for Parents/Carers
- 8 Welsh and bilingual opportunities
- 9 The E2 Employability & Enterprise Hub
- 10 Supporting your progression on to University
- 11 Student Life
- 12 Teaching & Learning
- 13 More Able & Talented
- 14 Sport Academy
- 15 Choosing the right course
- 16 Qualifications on offer
- 17 Apprenticeships & Traineeships
- 18 A levels and level 3 vocational courses
- 19 A Level provision for 2024/2025
- 20 Accountancy
- 21 Business and Management
- 22 BTEC L1 Introductory Diploma in Vocational Studies
- 23 Childrens Care, Play, Learning and Development
- 24 Construction & The Built Environment
- 27 AS Built Environment - Architecture
- 28 Creative Industries
- 30 Digital Industries  
(Computing, ICT, Games Design, Esports & Media)
- 32 Electrical Installation
- 33 Engineering
- 35 WJEC AS Level Product Design FT
- 36 English & ESOL
- 37 Foundation Learning
- 38 Hairdressing & Beauty
- 39 Health & Social Care
- 40 Humanities, Social Sciences & Languages
- 42 Motor Vehicle Technology
- 44 Science and Mathematics
- 46 Sport
- 47 SETUP
- 48 Public Services and Outdoor Adventure
- 49 Travel & Tourism
- 51 Access to HE
- 52 HE courses
- 54 Panasonic Trust Future Engineers Award
- 55 Personal Learning Accounts (PLA)
- 56 Next steps – How to apply

# Open Events

Whether you are a school leaver thinking about your next steps or an adult learner seeking to develop your skills or qualifications further, our open evenings provide the perfect opportunity for you to come in and view our facilities, meet our staff and talk to current students about their experiences of studying with us.

## Come and see us on:

Thursday 26<sup>th</sup> October 2023 | 4pm - 7pm

Tuesday 16<sup>th</sup> January 2024 | 4pm - 7pm

Wednesday 6<sup>th</sup> March 2024 | 4pm - 7pm

Thursday 25<sup>th</sup> April 2024 | 4pm - 7pm

For details of information sessions taking place at local secondary schools, please visit: [www.merthyr.ac.uk](http://www.merthyr.ac.uk)

# Keep in touch with us!

Follow us on Facebook, Twitter and Instagram to keep up to date on all of our college news.

/collegemerthirtydfil

@CollegeMerthyr

Use your smartphone to scan this code and it will take you to our website.



The College Merthyr Tydfil embraces the Equality Act 2010 and complies with the Public Sector Equality Duty. Our Strategic Equality Plan can be viewed on the college web pages.

The college has taken every effort to ensure that this course guide is as accurate as possible at the time of going to print. It is intended as a general guide to college courses and facilities and forms no part of a contract. The college reserves the right to make changes or withdraw, without notice, any of the courses, course facilities or support described.

# Welcome to The College Merthyr Tydfil

Whether you are a student leaving school in 2024, or a prospective further or higher education learner, we offer a unique opportunity to study at a modern and exciting campus that offers state of the art learning for all, right in the heart of Merthyr Tydfil.

The College Merthyr Tydfil offers something for everyone, with an extensive range of full time and part time courses, including a wide range of A Levels, vocational courses and further and higher education programmes – all delivered by a highly qualified and dedicated teaching team.

We offer a first class learning experience to all who study here. Our commitment to your learning experience, together with our award winning facilities, comprehensive course choices and outstanding student support will ensure that you can achieve your maximum potential and successfully gain the qualifications you require to progress to further or higher education or employment.

In addition, our partnership with REDHOUSE (Old Town Hall/Hen Neuadd Y Dref) enables learners wishing to study in creative and performing arts the opportunity to study in a specialised creative industries centre.

We hope this course guide provides you with some of the information that you require on the courses on offer and general life at the college.

If you do require any additional information please do not hesitate to contact Student Support on 0800 1693825.

We look forward to welcoming you to study at The College Merthyr Tydfil in 2024.

**Lisa Thomas, College Principal**

*Lisa Thomas*



**Lisa Thomas**  
College Principal



# Why Choose Us?

## Top Performing A level Academy

- » Offering a range of A Levels across a broad range of subject areas.
- » 99% A Level pass rate – the highest amongst all further education colleges in Wales.

## Vocational Centre of excellence

- » Highest performing college for vocational courses.
- » Offering over 60 different vocational qualifications and routes from business through to construction, engineering, sport, hair and beauty and many more.
- » 100% success rate across many vocational areas.
- » Comprehensive range of traineeship and apprenticeship opportunities.

## High quality teaching and learning

- » Innovative and inspiring lessons.
- » Commitment to training all staff on the OLEVI Outstanding Teacher programme.
- » Microsoft Showcase College

## Fantastic Enrichment Programme

- » Sports Academy, offering netball, football, rugby, basketball, table tennis and golf
- » Wide range of lunchtime and after college clubs in areas such as computer programming, debating, dance and E-Sports etc.
- » Opportunity to participate in Welsh and National Skills competitions.

## First-class facilities

- » Modern, state of the art facilities.
- » Dedicated Creative Industries facilities at Redhouse.
- » State of the art gym and fitness suite, brand new Golf Suite with Simulator, first class Gaming and E-Sports suites.

## Exciting range of extra-curricular activities including European educational trips and placements

- » Exciting range of international and European educational trips and visits e.g. A level trip to Thailand, Welsh trip to Patagonia.

## Opportunity to participate in prestigious university and work placements

- » Excellent links with the Seren 'Oxbridge' Hub to provide opportunities for learners to engage with elite universities.
- » Dedicated UCAS co-ordinators to help learners engage with initiatives such as the Cambridge STEP programme and Oxford University Summer school.
- » Dedicated Employability and Enterprise Hub Team to help learners become 'employment ready'.

## Friendly and welcoming environment

- » Friendly, supportive and nurturing staff who are dedicated to providing each and every learner with the best experience possible.

## Outstanding pastoral care and support

- » Personal and course tutors.
- » Designated Learning Coach team to support additional learning needs.
- » Dedicated Learner Welfare and Mental and Emotional Health and Well-Being Support team.

**HERE TO HELP YOU DEVELOP VALUABLE EMPLOYABILITY AND LIFE SKILLS FOR A BRIGHT AND EXCITING FUTURE**

# Our Class of 2023 – Success Stories

**Our class of 2023 achieved exceptional results with a 99% pass rate at A Level and 100% pass rate across many vocational areas.**

## AFON TAF HIGH SCHOOL

Former Afon Taf learner Cari Hope Davies, Cari achieved an outstanding A\* in English Literature, A\* in History, A\* in Sociology enabling her to now fulfil her ambition and progress on to study Law at the University of Oxford.



Commenting on her results, Cari stated: *"I've really enjoyed studying English, History and Sociology over the last two years. Studying these subjects with the support of the amazing tutors in Merthyr College has helped to develop my confidence and prepared me to pursue a degree in Law at university."*

## BRECON HIGH SCHOOL

Eva Deveney Billinge, former Brecon High School pupil, achieved an outstanding A\* in Biology, and an A in Chemistry and is now looking forward to progressing to the Queens University in Belfast to study Human Biology.



## CYFARTHFA HIGH SCHOOL

Former Cyfarthfa pupil Daniel McAleer achieved an A\* in Physics, A\* in further Maths and an A in History. Daniel is now going on to study a Mathematics and Physics Degree at the University of Bath.



Commenting on his experience, Daniel McAleer stated: *"I had a great experience studying at the College, and really benefitted from the opportunities and support from the tutors there. The STEM department in particular were always willing to go above and beyond to support my studies. This has allowed me to progress to study Mathematics and Physics at the University of Bath."*

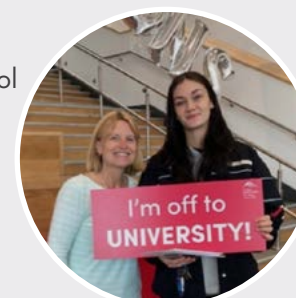
## BLESSED CARLO ACUTIS

Past Blessed Carlo Acutis pupil Rhys Gales achieved an A\* and 2 B's and is off to Nottingham University to study Computer Science.



## PEN-Y-DRE HIGH SCHOOL

Past Pen-Y-Dre High School pupil, Sadie O'Dea achieved DMM. Sadie is now progressing on to study Sport and Exercise Science at Cardiff Met.





# Outstanding Learner and Pastoral Support

We pride ourselves on our high quality teaching and learning, but this is only part of the picture.

Every learner matters to us - you are all unique. In addition to providing a wide range of courses, we also provide an environment in which learners of every ability and ambition, can succeed. This might be in terms of the qualifications you gain, the new skills you acquire, or the extracurricular or entrepreneurial activities you take part in.

Throughout your time with us, you can be rest assured that we will provide each and every one of you with the care and support that you deserve. We are committed to respecting culture, celebrating diversity and promoting a safe learning community for all. Many of our learners and visitors often comment about how friendly, safe and welcoming the college environment is.

## Admissions Team

Your journey at the college begins with the Admissions process. We have a dedicated Admissions and Enquiries team who will support you through your application and enrolment process.

We will provide you with advice, support and guidance to help you choose the right course for you and be your first point of contact for any queries you have related to completing your application form or attending your interview. Once you have been made an offer, we will help ensure that you have all of the information you require on transport and funding to help with the cost of your studies and also help to ensure that your transition into college is as smooth as possible.



**Admissions Team**  
Shelby Berry, Gavin Edwards & Andrew Jones

## Wellbeing Hub

Our dedicated Wellbeing Hub provides an integrated support system for learners, with expert, advice, guidance and support focussing on all aspects of mental and emotional health and wellbeing, including safeguarding, Additional Learning Needs support, study skills support along with medical and therapeutic inputs from a Nurse Practitioner and Counsellor. Members of the team are also available to attend school transition reviews as part of the admissions process for college.

## Financial Support

Our Finance team are here to provide you with support, help and guidance on all aspects of funding and travel to college. We have a range of grants and bursaries to help with the costs of your study. For further information, please visit our website.

## Scholarships

The college offers a range of scholarships for learners. For further information, please contact **Shelby Berry** on [s.berry@merthyr.ac.uk](mailto:s.berry@merthyr.ac.uk)

## Help with the costs of transport

If you are aged 16, 17 or 18 years on September 1st 2024 and planning to study full-time you may be eligible for free transport.

For more information please visit:

[www.merthyr.ac.uk/content/travel-policy](http://www.merthyr.ac.uk/content/travel-policy)

# ADVICE, SUPPORT AND GUIDANCE TO HELP YOU CHOOSE THE RIGHT COURSE FOR YOU

# Learning Zone

The college has a dedicated Learning Zone which provides access to a wide range of high quality services, facilities and support for learners at all levels.

## Resources include:

- » Print & electronic books and journals.
- » Print & electronic subject guides.
- » I.T facilities, including free Wifi.
- » Study spaces designed for both individual, silent study and group work.
- » An online public access catalogue Findit to locate, reserve & request items and manage personal borrowing.
- » Access to a range of user education sessions designed to support you in your studies.

Learners will also have access to resources held at the other site libraries within the University of South Wales group, through the inter-site request system.



# Information for Parents/Carers

The College Merthyr Tydfil will represent a brand new learning experience for your son and daughter and we're keen to ensure that we provide as much information, advice and guidance to support both you and them to make the right decision about the course(s) they wish to study at the college and ensure that their transition from school to college is as smooth as possible.

## Working with you to support your child's progress at college

Like secondary schools, we welcome the involvement of parents/carers and will work with you to ensure that your child achieves their maximum potential. The reason for this is that we know that the students who perform best are those who do three things:

- » Work hard.
- » Are supported and taught by high quality and committed teachers.
- » Are supported and encouraged by parents.

## Therefore, we will ensure that you:

- » Play a full role in the partnership between your child and the college.
- » Have an opportunity to come in at the beginning of term to meet your child's tutors.
- » Are informed straight away about any instances of non-attendance.
- » Receive comprehensive, accurate and timely information from the college throughout the duration of their chosen course of study, including college newsletters.
- » Receive progress reports on your child twice yearly.
- » Attend a parents/carers evening twice yearly to discuss your child's performance.



# Welsh & Bilingual opportunities

The College is committed to providing a Welsh language ethos and culture across the college environment.

The college offers many opportunities for learners who want to practice, improve and use their Welsh skills both in the workplace and in a learning environment.

**Our dedicated Welsh language Officer is here to help and support learners through:**

- › Providing subject specific study skills support.
- › Providing a dedicated Welsh room (Shwmaeronment room) for all learners across the college.
- › Offering a comprehensive programme of Welsh medium enrichment activities.
- › Providing bilingual glossaries and vocabulary.
- › Welsh medium mock interviews and guidance to write CVs and cover letters.
- › Opportunity to participate in Welsh cultural events.
- › Look out for our themed Welsh events, activities and clubs that take place throughout the academic year.
- › Welsh language Scholarships. (Our Welsh language scholarships are available to students studying the Welsh Baccalaureate Programme at the College).
- › Students will have the opportunity to produce their work through the medium of Welsh.

## Welsh Ambassador Scholarships

The college is looking for Welsh language ambassadors to share your student experience and promote the Welsh language throughout the college and public events. Embracing the language will help you gain invaluable skills to benefit you now and in the future such as:

- › Enhance your personal knowledge and improve your skills, particularly in marketing, communication, organisation, planning, leadership and teamwork.
- › Gain experience and boost your confidence.
- › Meet new friends.
- › Add to your CV and improve your employment prospects.

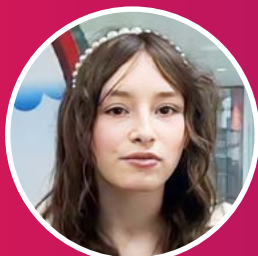
For more information contact

**Lynwen Harrington** on **01685726000** ext **6331** or email **l.harrington@merthyr.ac.uk**

## Case Study RUBY HOPE

*"My name is Ruby and I am a student at the college. As a Welsh speaker, I have so many opportunities to use my Welsh language through various opportunities.*

*I joined the Welsh language team and became a Welsh language ambassador. Through this, I have maintained my Welsh language by being a part of various events inside and outside college, being able to speak Welsh whilst in college, feeling a part of a group, enjoying trips and lots of other opportunities. These opportunities have helped me to develop my skills and use the Welsh language with confidence! I also produced all my assessments and completed my exams through the medium of Welsh. I have had support throughout my studies and all hand outs were provided to me in Welsh"*



## Case Study ANWEN OWEN

*"Since leaving school, I didn't know if I wanted to use the Welsh language anymore however, the Welsh language team supported me to have a clear understanding of how fortunate I was in having that extra skill. I joined the Welsh ambassador scheme and I have developed my confidence in using the Welsh language through representing the college in all events throughout the year and helping out in external events such as the Eisteddfod. I really enjoy the college's Welsh language opportunities which have allowed me to continue my links with the language and be proud of the language I am so lucky to have. Being a part of the Welsh language team has made me realise the importance of having that extra skill, and I enjoy emphasising the importance of the Welsh language to learners and staff"*

# The E2 Employability & Enterprise Hub

E2 (Enterprise and Employability Bureau) is our dedicated team offering bespoke employability, enterprise, career and progression advice.

We host a variety of learner workshops, drop-in sessions, open evenings, volunteering and career events throughout the year.

Follow our dedicated Twitter page @TCMTEandE:

Instagram: TCMTEEnterprise&Employability:

Facebook: TCMT Employability and Enterprise

for regular updates on job vacancies, career advice, events, live sessions, guest speakers and employability opportunities across Wales and the UK.

## Drop into the E2 Hub near the Open Access Area on the 1st floor for help with:

- › CV development
- › Cover letters
- › Job applications
- › Interview skills
- › Presentation skills
- › Career pathway advice
- › Work placements
- › Starting your own business

## Ask us about:

- › Bootcamps (Big Ideas Wales)
- › Role Model sessions
- › Volunteering opportunities
- › Work placements
- › Apprenticeships and training

Come along to E2 to meet a wide range of employers, volunteering organisations, charities, universities, career mentors and business advisors! We work closely with a large number of local and national employers and collaborate closely with Job Centre Plus and Careers Wales to keep abreast of latest job vacancies and training opportunities.

Our aim is to ensure that every learner receives the best possible advice and guidance, receiving regular updates on progression and current employability opportunities.

Our Student Services team can also advise on funding and signpost to the most appropriate courses.

In conclusion, E2 is a 'one stop shop' for Employability, Enterprise and Progression at the college; embracing the learner experience to ensure that the learning journey is enjoyable and rewarding.

Contact the E2 team on **TCMT\_EandE@merthyr.ac.uk**

## Working in partnership with:

- › Morgan Sindall Construction
- › Tilbury Douglas
- › Cwm Taf Morgannwg University Health Board
- › PCH
- › Future Valleys Construction
- › Golf Wales
- › Active Wales
- › Cyber Cymru Wales
- › RCN Nursing Cadet Scheme
- › Prince Charles Hospital Supported Internship Programme
- › The Army
- › Karen Blake Consultancy
- › USW
- › Civil Service
- › Legacy in the Community
- › ONS
- › Simbec
- › Police
- › Fire Service
- › Scope
- › Parkwood Outdoors
- › Welsh Government
- › Y Prentis
- › Merthyr Valley Homes
- › VAMT
- › NatWest Bank
- › Network75
- › Pacey



# Supporting your progression on to University

If you are seeking to progress on to university, we offer a tailored programme of support to help you along the way.

## This includes:

- Dedicated college UCAS co-ordinators to guide you every step of the way through the UCAS process.
- Help and support to develop your personal statements (including sessions run by leading universities).
- Programme of interview support, including mock interviews with panels of college staff, university advisors and representatives from industry.
- Comprehensive range of enterprise activities to help you develop a range of transferable skills, build your confidence and gain experience of real life business situations.
- Annual College Career Pathways Event to enable you to talk to employers and universities about career and higher education options.

## Supporting more able and talented learners

The college is committed to supporting its high aspiring students. We have a dedicated and unique programme of activities and events, which will enable you to stand out from other equally able students from across the country.

## The programme includes:

- University level courses.
- Motivational speakers.
- Higher education conferences organised by Oxford and Cambridge universities.
- Student support with university entry exams.
- Motivational talks from invited guests and college alumni.
- Access to the Brilliant Club.
- Individual student support with university entry exams from experienced tutors.

# THE SEREN NETWORK

## Oxbridge Hub – SEREN

Students who achieve six or more A\* grades at GCSE Level will be able to take part in the **Merthyr Tydfil/Rhondda Cynon Taff Seren Hub**.



# Student Life

Your time at the college can be an enjoyable and rewarding experience. How enjoyable and rewarding it is, depends on you!

Our college Enrichment programme provides a fantastic range of activities and programmes for you to enjoy, from yoga, gym and fitness sessions, golf, basketball, football, E-Sports, Welsh club, debating, chess club, board games club, educational trips and visits and much more!

## Learners Senedd & Learner Ambassador Programme

If you are interested in getting more out of your time at The College Merthyr Tydfil, consider applying to become a Learner Ambassador.

This exciting role offers you the opportunity to volunteer during open evenings, Parents Evenings, Taster Days, and marketing events at your former schools. This could involve meeting and greeting prospective learners and their parents/carers, providing tours of the college building and facilities, chatting to prospective learners about your experience at college, or just helping out your course tutors during key college events. This experience will look fantastic on your CV or UCAS application form, and being an ambassador will enable you to share your experience and gain invaluable skills to benefit you now and in the future.



Additionally, you can also participate in the Learner Senedd, which provides a forum where learners can come along and have their say on the development of the college, your learning, and your wellbeing. Meetings are held on a monthly basis, and representatives will be elected in September of each year. Being a Learner Senedd representative is a really important role as it enables you to give your views on all aspects of college life, represent the views of your fellow learners and class friends, and get involved in taking forward recommendations and actions for improving aspects of college life. It's an opportunity to help enhance your communication, team working, and organization skills.

If you are interested in becoming a part of the Learner Senedd, please contact **Andrew Jones** in Student Admissions via email on **a.jones1@merthyr.ac.uk**

## Case study CERITH DENNIS

A member of our E-Sports Tydfil Tytans team was successful in achieving a bronze medal in the eFootball Open at the Commonwealth Esports Championships.

While studying at the College, you have the opportunity to join our esports team 'Tydfil Tytans'. Playing after College hours on a Wednesday evening, you can showcase your passion for gaming through a variety of competitive titles. As a member of the team you will have the opportunity to represent The College Merthyr Tydfil at a national level, competing against teams all across the UK in the British Esports Championships.



## LGBTQ+

At The College Merthyr Tydfil, we pride ourselves on fostering an inclusive and diverse student community where everyone is encouraged to express their authentic selves.



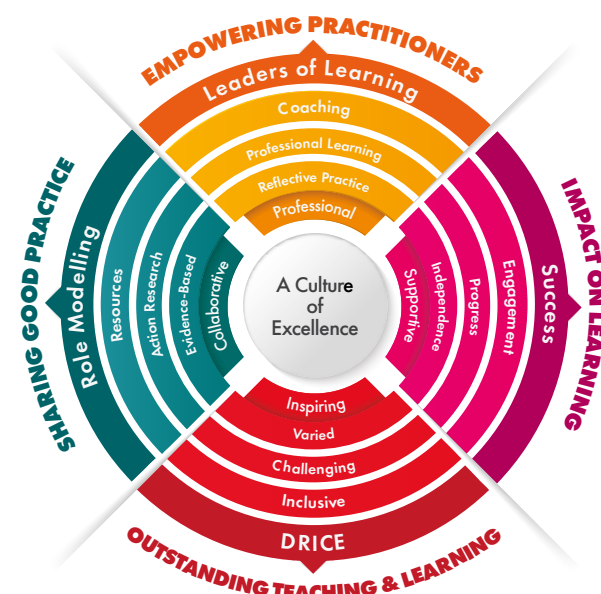
Our LGBTQ+ Group stands as a shining testament to this commitment. Joining this vibrant and supportive group opens up a world of opportunities to connect, learn, and grow. It's a safe space where students of all orientations can come together to celebrate their identities, forge lasting friendships, and engage in meaningful discussions. From informative workshops to exciting events, the LGBTQ+ Group at The College Merthyr Tydfil offers a platform for individuals to advocate for equality and create a campus environment that is welcoming to all. Whether you identify as LGBTQ+ or simply want to be an ally, this club provides an invaluable chance to be a part of a tight-knit community dedicated to fostering acceptance and celebrating diversity. Embrace your true self and be part of something extraordinary at College Merthyr Tydfil's LGBTQ+ Group.

# Teaching & Learning

'Merthyr College embraces the culture and ethos of OLEVI... The impact of your work and the current delegates' professionalism and enthusiasm for impacting on the learning of their students and colleagues was clearly demonstrated'.

OLEVI Quality Review

Providing an outstanding learner experience is a strategic priority of the college and Teaching & Learning is fundamental in achieving this. The college wishes to develop a team culture of enquiry and innovation, working together to create effective and innovative approaches to Teaching and Learning. Our Teaching & Learning strategy can be seen below.



The Teaching & Learning Strategy embraces and embeds the OLEVI principles as a means of driving up standards, with improvements in Teaching and Learning leading to improvements in outcomes for learners. Based on the TLC model (Teaching & Learning, Leadership and Coaching) the strategy aims to;

- » grow exceptional practitioners
- » empower practitioners to enhance the leadership of teaching and learning
- » engage staff in a collaborative coaching ethos
- » develop an 'open door' approach to sharing best practice
- » provide learners with quality teaching in outstanding learning environments
- » enhance learners' knowledge and skills that are critical for progression or employment
- » grow a culture of excellence and innovation

The cornerstone of the Teaching & Learning Strategy is the **DRICE** model. Through the employment of **DRICE**, teachers should focus on planning and facilitating sessions that are learner-led and achieve the following;

- » **D**eepens Thinking and Learning
- » **R**ole Models the learning process
- » **I**mpacts on learning and progress
- » **C**hallenges expectations
- » **E**ngages learners in their own learning

If you require any further information on our approach to Teaching & Learning then please contact **Chris Ford** (Vice Principal Curriculum & Quality) at [c.ford@merthyr.ac.uk](mailto:c.ford@merthyr.ac.uk)



# More Able & Talented

At The College Merthyr Tydfil we believe in creating an inclusive learning community that celebrates the uniqueness of all learners.

The College will promote stimulating and challenging experiences through a broad and balanced curriculum that also offers quality learning activities that focus on the particular needs and talents of the learners. This will be supplemented by a bespoke tutorial and enrichment programme that offers More Able learners the opportunity to engage with a range of talks, workshops and competitions that extends their learning beyond the classroom. We are also committed to identifying and meeting the needs of these learners as early as possible in order to enable them to achieve the best possible outcomes.



We are the first Further Education college in the world to receive the NACE (National Association for Able Children in Education) Challenge Award for our commitment to More Able learners and NACE have provided extensive feedback following their visit to the college earlier this year;

*"The approach to MAT provision at The College Merthyr Tydfil is holistic. Academic, vocational, creative, technical, artistic, cultural, social, and sporting ability and talents have been identified throughout college and provision made to nurture learners showing ability in these areas".*

*"Staff are excellent role models to the learners they teach. They exude a clear passion and enthusiasm for their subjects. Their approach to teaching is motivational and engaging".*

*"Students are immersed in a rich learning environment where their experiences are enhanced through the provision and use of impressive learning resources".*

NACE Challenge Award Report, May 2023

As a member of NACE we strive to provide the best possible experience for our More Able learners and currently work with a range of partners to enhance our provision in both a general and subject-specific context.

## These partnerships include;

- » The Seren Network
- » The Brilliant Club
- » Dr Lesley Taylor (Stanford Ph.D.)
- » Cyber College Cymru
- » Royal College of Nursing Cadets Programme
- » National Theatre Connections
- » Theatr Glo
- » Skills Competitions Wales
- » F1 in Schools
- » Table Tennis Wales
- » TCMT Golf Academy
- » Big Ideas Wales

If you require any further information on our provision for More Able and Talented learners then please contact **Chris Ford** (Vice Principle of Curriculum and Quality) at [c.ford@merthyr.ac.uk](mailto:c.ford@merthyr.ac.uk)



## A RANGE OF TALKS, WORKSHOPS AND COMPETITIONS THAT EXTENDS THEIR LEARNING BEYOND THE CLASSROOM



# Sports Academy

The college has a dedicated sports academy providing opportunities for learners to engage in academy level coaching and teams in football, netball, rugby, golf, basketball and table tennis, alongside their studies.

Weekly training, fitness and strength and conditioning sessions are available to all learners within our academies, with opportunities to engage in league, cup and friendly matches. In addition, many learners within our sporting academies will also have the opportunity to attend selection trials to represent Welsh Colleges and national teams.

Follow our Sports Academy on X @MsportsacademyC

## Case Study ELIN TYNAN

Former Y Pant Comprehensive school pupil, Elin Tynan, joined the college as an A level learner in September 2022. Alongside her A level studies, Elin participates in our golf academy, providing her with the opportunity to receive training and coaching from professional golfer and elite coach, Neil Matthews. Through being part of our Academy, Elin has had the opportunity to represent Wales.



## Case Study JOSH JONES

Former Cyfarthfa pupil Josh Jones joined our football academy, enabling him to train and play football alongside his full-time Engineering course.

As part of our academy, Josh had the opportunity to attend selection trials to represent Welsh Colleges and national teams. Further to these trials, he was successful in gaining a place on the both the Welsh Colleges Football squad and also the Boys Club of Wales Under 19s squad. Pictured with Josh below are past college learners and Cyfarthfa pupils Jac Hughes, Dylan Dinham, Mackenzie Thomas and Reagan Evans, who were also successful in gaining a place in the Boys Club of Wales Under 19s squad.



## ENGAGE IN ACADEMY LEVEL COACHING AND TEAMS IN FOOTBALL, NETBALL, RUGBY, GOLF, BASKETBALL AND TABLE TENNIS

# Choosing the Right Course

We offer a wide range of qualifications from Entry Level through to Level 6 covering a broad spectrum of subjects, so whatever your future ambition, we have a suitable course for you.

We place great emphasis on ensuring that all learners are placed on the best course for them, taking into account their skills and qualifications achieved to date, their aspirations and their intended career path.

The college entry requirements provide a benchmark guide for this process, so that learners are aware of the level of qualifications, skills and knowledge they require to study on the course, helping to ensure that each learner is on a course maximum potential.

## MAKING YOUR CHOICES

- » Subjects that you enjoy and are committed to?
- » Subjects you are good at?
- » Subjects that support your future career choices?
- » Subjects that present a new challenge?
- » Entry Requirements?

The subjects you choose to study may depend upon:

- » The qualifications you have already gained or your impending GCSE examination grades.
- » The subjects you enjoy.
- » The subjects you need to study in order to progress to your chosen higher education course or chosen career.

## Qualifications Explained

### LEVEL E / LEVEL 1

- » Entry and Level 1 qualifications give students a chance to develop a range of skills with plenty of individual support. No formal qualifications are needed to get on to this level of courses.
- » Qualifications on offer include BTEC Entry Level certificates, BTEC Level 1 WBQ Foundation Post 16.

### LEVEL 2

- » BTEC Level 2 certificate
- » VRQ Level 2
- » GCSE Mathematics and English
- » Apprenticeships
- » WBQ Foundation Post 16

### LEVEL 3

- » AS and A2
- » VRQ Level 3
- » BTEC Diploma, National Foundation Diploma and Extended Diploma
- » Welsh Baccalaureate Advanced

### LEVEL 4

- » Certificate of HE
- » Year 1 Foundation Degree

### LEVEL 5

- » Year 2 Foundation Degree

### LEVEL 6

- » Year 3 BA Hons Degree





# Qualifications on Offer

## Skills Programmes

The college offers a range of skills programmes to support learners develop their literacy, numeracy, digital, critical thinking, planning and overall personal effectiveness skills. These skills are offered across a range of Essential Skills Wales and Agored programmes and include:

- › Literacy Skills
- › Numeracy Skills
- › Pre GCSE English and Mathematics
- › GCSE English and Mathematics

## AS Level & A Level

These are recognised entry qualifications for university courses. An A Level includes AS and A2 units. In your first year you can usually choose to study up to four subjects at AS Level. At the end of your first year you take an AS Level exam and gain a recognised qualification.

## You can continue for a second year and achieve the full A Level.

All full time students studying A Level programmes are required to study 3 A Level subjects in addition to the Welsh Baccalaureate. We offer the opportunity for learners achieving 7 A grades or above in their GCSEs to study 4 A level subjects in place of studying the Welsh Baccalaureate.

## Vocational (e.g. BTEC, UAL, City and Guilds, WJEC)

Level 3 vocational qualifications are recognised entry qualifications and an excellent route to university. There are vocational qualifications available in a wide range of subjects. They have been designed in collaboration with industry, so they equip you with the skills and knowledge that employers are looking for. The qualifications offer a mix of theory and practice, and usually include an element of work experience. They are available at Levels 1, 2 and 3.

## Vocational or A Level?

### What is the difference?

Both A Levels and Level 3 qualifications are recognised entry qualifications for university courses.

## NVQ (National Vocational Qualification)

NVQs are work-related qualifications normally delivered and assessed in the workplace. These can form part of an Apprenticeship. A qualified assessor will observe you and assess you on the actual work you carry out in the workplace. They will test your knowledge and understanding as well as your performance.

## 'Skills for Further Study' and 'Access to Higher Education'

We offer Level 2 Skills for Further Study and Level 3 Access to Higher Education courses.

## VRQs

VRQs are widely recognised professional qualifications, enabling learners to improve their knowledge, skills and understanding of specific areas of employment.

## GCSE English and Mathematics

We offer GCSE resits in English and Mathematics and they will provide you with a chance to improve on the grades you obtained whilst at school.

## Welsh Baccalaureate

The college offers the Welsh Baccalaureate Qualification (WBQ) at three levels across a range of vocational and academic areas;

- › Level 3 Advanced/BTEC WBQ Advanced
- › Level 2 BTEC/Vocational WBQ National Post 16
- › Level 1 BTEC/Vocational WBQ Foundation Post 16



# Traineeships & Apprenticeships

Not sure if full-time learning is for you? Our apprenticeship and traineeship programmes provide the perfect opportunity for you to achieve qualifications and skills whilst in employment (Apprenticeships) or undertaking work experience (Traineeships).

## How does it work?

For Traineeships and Apprenticeships, you get to spend four days a week in employment or work placement and one day at college.

## Traineeships

- › Up to £50 non-means tested allowance, depending on which strand of the programme you follow.
- › Develop Employability Skills.
- › Wide range of traineeships on offer with local work placements.
- › Progression from this includes employment, apprenticeships or further education.

## What will I gain from it?

- › Earn an allowance.
- › Get paid holidays.
- › Receive job specific training.
- › Achieve qualifications.

## Apprenticeships

- › Exciting opportunities to study qualifications from Level 2 to Level 5.
- › Employed status so you earn a wage whilst achieving job specific qualifications.
- › Attendance at college or Training Centre once a week.

## We currently offer apprenticeships in:

- › Management and Team Leading.
- › Business Administration.
- › Retail & Customer Service.
- › Construction Trades.
- › Engineering.
- › Mechanics.
- › Warehousing & Storage.
- › Hospitality (Food & Beverage).
- › Shared Apprenticeship Programme offered in Merthyr Tydfil for STEM apprenticeships through Aspire.

## Want to know more?

Contact our team of advisers directly

Telephone: **01685 371747** or  
email: **susan.type@tydfil.com**

### Case Study

## SHAUN ABBOTT

Shaun, a former Mountain Ash Comprehensive School pupil, started in the college as a Skillbuild learner with an occupational aim of becoming a fully qualified mechanic. Shaun worked really hard to complete level 1 enabling him to progress successfully on to level 2 and then on to level 3.

Shaun is proof that, with hard work and dedication, you can achieve your goals.



### Case Study

## COREY WILLIAMS

Work based learning student Corey Williams represented the College Merthyr Tydfil at the Welsh National Eisteddfod at Cardiff Bay.

Corey completed a six week Welsh course at the college covering reception skills, both over the telephone and as a meet and greet receptionist.

# A levels and level 3 vocational courses

A levels and level 3 vocational courses can be used to enter higher education courses.

Entry onto these courses are denoted by a UCAS Tariff.

The table opposite shows UCAS points tariff for A Levels & BTECs:

Tarif Points	AS	AS	BTEC National Diploma	BTEC National Diploma	BTEC National Diploma	BTEC National Diploma	BTEC Extended Diploma	BTEC Diploma
168	>>	>>	>>	>>	>>	D*D*D*	D	
160	>>	>>	>>	>>	>>	D*D*D*		
152	>>	>>	>>	>>	>>	D*DD		
144	>>	>>	>>	>>	>>	DDD	HM	
128	>>	>>	>>	>>	>>	DDM		
120	>>	>>	>>	>>	>>	DMM	M	
112	>>	>>	>>	>>	D*D*			
104	>>	>>	>>	>>	D*D			
96	>>	>>	>>	>>	DD	MMM	HP	
84	>>	>>	>>	D*D*	>>	>>	>>	D
80	>>	>>	>>	>>	DM	MMP		
78	>>	>>	>>	D*D				
72	>>	>>	>>	DD	>>	>>	P	
64	>>	>>	>>	>>	MM	MPP		
60	>>	>>	>>	DM	>>	>>	>>	M
56	>>	A*	D*					
48	>>	A	D	MM	MP	PPP		
40	>>	B						
36	>>	>>	>>	MP	>>	>>	>>	P
32	>>	C	M	>>	PP			
30								
24	>>	D	>>	PP				
20	A							
16	B	E	P					
12	C							
10	D							
6	E							

## Key to BTEC and UAL Grades

D\*-Distinction (A\* equivalent) | D-Distinction

M-Merit | Hm-High Merit | HP-High Pass | P-Pass

## How to progress into Higher Education

The Universities and Colleges Admissions Service (UCAS) uses a points system to set a value for a range of qualifications. To find out the entry requirements for the degree that you are interested in visit: [www.ucas.com](http://www.ucas.com)

## University of South Wales

The college's partnership with the University of South Wales enables us to provide enhanced progression pathways to higher education, offering a wide range of university level courses here at The College Merthyr Tydfil. With over 200 learners currently enrolled on university level qualifications, the college provides high quality teaching and support, ensuring that all learners achieve their maximum potential and successfully gain the qualifications required to progress onto honours degree programmes, professional qualifications or employment.

# A Level provision for 2024/2025

A Level Subject	Entry Requirements
<b>Art &amp; Design</b>	5 GCSE's grade A*-C Including English Language and a B in Art and Design
<b>Business</b>	5 GCSE's grade A*-C including English and B grade in Maths
<b>Biology</b>	5 GCSE's grade A-C including at least a B in both Maths and English, BB in double science or BBB in triple science
<b>Built Environment</b>	5 GCSE's grade A*-C, applicants must have a C grade or above in GCSE Maths and English along with preferable combinations of Science/ Engineering / Digital Technology / Construction.
<b>Chemistry</b>	5 GCSE's grade A-C including at least a B in Maths (usually Higher Tier), BB in double science or BBB in triple science
<b>Computer Science</b>	5 GCSE's grade A*-C, B grade or above in Maths or Tech/ Science based subject and C or above in English
<b>Criminology</b>	5 GCSE's grade A*-C including English
<b>Digital Technology</b>	5 GCSE's grade C or above, or equivalent
<b>Drama</b>	Level 2 qualification in performing arts. Equivalent of four C grades at GCSE (to include one subject testing the use of English)
<b>English Lit</b>	5 A*-C including English Language and Maths, C and above in English
<b>English Lit &amp; Lang</b>	5 A*-C including English Language and Maths, C and above in English
<b>Engineering</b>	5 GCSE's grade A*-C to include Mathematics, English
<b>Further Mathematics</b>	8 GCSE's grade A*-C including a minimum of A in Maths
<b>Geography</b>	5 GCSE's grade A*-C including English Language, Maths and Science GCSE Geography is desirable but not essential, however this is at the tutor's discretion. If GCSE Geography has been studied a grade C or above is required
<b>Government &amp; Politics</b>	5 GCSE's grade A*-C preferably a B grade in History or English
<b>History</b>	5 GCSE's grade A*-C preferably a B grade in History or English
<b>Law</b>	5 GCSE's grade A*-C including a B or above in GCSE English
<b>Maths</b>	5 GCSE's grade A*-C including a minimum of B in Maths
<b>Physics</b>	5 GCSE's grade A-C including at least a B in Maths (usually Higher Tier), BB in double science or BBB in triple science
<b>Photography</b>	5 GCSE's grade A-C including English Language
<b>Product Design</b>	Grade C or above in English Language and Maths. B grade in D&T at GCSE
<b>Psychology</b>	5 GCSE's grade A*-C including grade B or above in English Language and a grade C in Maths is desirable
<b>Religious Studies</b>	5 GCSE's grade A*-C including English Language. Grade B or above in English would be desirable
<b>Sociology</b>	5 GCSE's grade A*-C including a B in English Language or Literature
<b>Sport</b>	5 GCSE's grade A*-C including English and Maths
<b>Tourism</b>	5 GCSE's grade A*-C including C in English Language and Maths
<b>Welsh</b>	5 GCSE's grade A*-C including a Welsh C grade or above in English Language plus a B grade in full course Welsh or an A grade in short course

## A Levels

Our A Level Academy offers a variety of AS and A2 Levels, all delivered by a team of professional and qualified staff. The majority of full-time A Level students follow a programme of three A Levels in addition to the WBQ.

Please note that students are required to take a minimum of three A-Level subjects. Learners who achieve 7 GCSE A\*-A grades or above can study 4 A levels.

You can also choose to widen you studies further by choosing one or two A Levels in combination with a BTEC certificate.

The entry requirements for our A Level courses are set on an individual subject basis. In general, all subjects require a **minimum** of 5 GCSE's at grade C or above, including Maths and English.



# Accountancy

Our AAT courses are run part time and available at a Level 2,3 & 4. This will provide you the perfect foundation route into a career as an accountant or any financial role, the career options are endless.

## AAT L2 Accounting PT

Monday evening or Wednesday day

## AAT L3 Accounting PT

Monday day or Wednesday evening

## AAT L4 Accounting HE PT

Monday and Tuesday evening or Tuesday day

**Entry Requirements:** No formal qualifications are required, however applicants should have basic literacy and numeracy skills..

### Where can I progress to next?

Many learners progress into a variety of accountancy related roles such as: Accounts payable and expenses supervisor, Assistant financial accountant, Commercial analyst, Cost accountant, Fixed asset accountant, Payments and billing manager, Payroll manager, Senior bookkeeper, Senior finance officer, Senior fund accountant, Senior insolvency administrator, Tax supervisor, VAT accountant.

### Case Study GAVIN EDWARDS

*"After completing my AAT L2 and L3 a few years ago I decided to take on a degree, however, I have now decided to go back and finish my AAT L4, the course will allow me to pursue my dream career in accounting. The teaching quality is of the highest standard and the support you receive from the tutors is second to none, I would highly recommend AAT if you are looking at becoming an accountant or any financial role, the opportunities it grants you are endless."*



**Our AAT courses are covered by PLA, please see PLA page for further details**

# ACCOUNTING IS THE LANGUAGE OF BUSINESS

WARREN BUFFETT

# Business & Management

Our Business and Management courses offer an excellent foundation for working in any business environment, ranging from Level 2 to Higher Education.

## WJEC AS/A2 Level Business FT

**Entry Requirements:** 5 GCSE's A\*-C including English Language and B grade in Mathematics.

A level business studies will enable candidates to focus on the dynamic nature of the contemporary business world.

## BTEC L2 Extended Certificate in Business FT

**Entry Requirements:** 4 GCSE A\*-D grade.

### Career Opportunities

- » Marketing
- » HR Management
- » Law
- » Finance & Accounting
- » Business Ethics
- » International Business

### Case Study JAKUB WALCZAK

Current Level 3 Business Extended Diploma Learner

*"The Level 3 Business course at the college has provided me with the confidence, skills and entry criteria to study Business Management at university. A highlight for me was the international trips during the course and work experience, applying the business concepts in real life situations. I would highly recommend this course to everyone!"*



## BTEC L3 National Foundation Diploma Business FT

**Entry Requirements:** Applicants are expected to possess a minimum of 5 GCSE passes at A\*-C grades or equivalent qualifications or a Level 2 in Business at a Merit grade.

### Case Study MAX EALES

BTEC Level 3 Business

*"I really enjoyed studying in Merthyr college over the last 3 and they have helped me massively to achieve the grades that want and help me get to a stage to start university."*

By choosing Business and Travel, you will have the opportunity to work with local businesses and travel agencies, including Mark Warner Travel.

### Case Study CAMERON AIREY

Current Level 3 Business Extended Diploma Learner

*"Studying the Level 3 Extended Diploma in Business has given me the knowledge and confidence to pursue my career in business, achieving distinctions in the first year. The highly knowledgeable tutors, the mixture of examinations and coursework and the opportunities available to complete additional activities to develop skills and experience makes the course a fantastic choice!"*





# BTEC L1 Introductory Diploma in Vocational Studies

The Level 1 Vocational Studies course is an ideal stepping stone to develop your skills to progress onto one of our subject specific level 2 programmes at college.

This course provides a number of core units including organisational skills, research skills, working with others and progression planning. Alongside these, you will also complete units in your chosen pathway subjects and literacy and numeracy.

Do you what to progress into a career in Health and Social Care, Childcare, Business, Beauty, Travel and Tourism, Sport or Public Services. If so, this course allows you to complete units in these subject areas, alongside developing your study skills and progression path.

**Entry Requirements:** There are no formal qualifications required, however applicants should have basic literacy and numeracy skills.

## Where can I progress to next?

Successful completion of the Level 1 Vocational Studies course will enable you to progress onto a Level 2 programme at the college.

## AN INVESTMENT IN KNOWLEDGE PAYS THE BEST INTEREST

BENJAMIN FRANKLIN

### Case Study DYLAN DAVIES

#### L1 Vocational Studies

Former Pen-Y-Dre Highschool student Dylan said:

*"While I have been studying at Merthyr College, my experience has been very positive, and I feel like it has made me a more mature person and has brought the best out of me. I started this year with a couple of nice introductions such as the gym and the sports hall. My tutors this year have been amazing, they have helped me to develop my skills for me to progress on to next year's course. I want to progress on to level 2 sports because I love playing sports. My favourite sport is basketball. College has given me further opportunities to develop my basketball skills as I have been able to join the college's basketball club. Being part of the basketball club has allowed me to make new friends and keep fit."*

*As part of my course, I have really enjoyed the public services aspect. Rhydian Powell has been really encouraging and has helped me a lot this year. I enjoyed the travel and tourism module with Andrew Williams, which was great, alongside the sport module."*



# Children's Care, Play, Learning & Development

## WJEC L2 Children's Care, Play, Learning And Development Practice and Theory

**Entry Requirements:** At least 4 GCSE's grade A\*-D including C grade in English and/or Maths and a formal interview and references. Level 1 qualification may also be considered.

## WJEC L3 Children's Care, Play, Learning and Development Core

**Entry Requirements:** 5 GCSE's grade A\*-C including English and Mathematics.

## NCFE CACHE L2 Certificate in Supporting Teaching and Learning PT

**Entry Requirements:** Candidates should be over 16, with the academic skills to work independently at level 2.

## NCFE CACHE L3 Diploma in Supporting Teaching and Learning PT

**Entry Requirements:** Candidates should be over 16, hold a relevant level 2 with previous experience of working in a school or college environment.

## Where can I progress to next?

These qualifications will provide you knowledge and understanding of the role and context of Children's Care, Learning and Development.

## Career Opportunities

- » Teaching
- » Teaching assistants
- » Nannies
- » Au pair
- » Play Therapist
- » Speech and Language
- » Paediatric Nursing

### Case Study LOUIS LLOYD

#### Children's Care, Play, Learning & Development Level 2

Louis has done exceptionally well this year. Prior to the course he completed a qualification within the college but decided that he would like to work with children. Louis was very dubious about starting the course as he believed that Childcare is very female orientated and was anxious about what others would think.

Louis has excelled in all areas of the course. He was one of the first to start placement and has loved it ever since. He has shown great commitment to his placement and I know the school he attends is very grateful as he hasn't missed a day all year and he attends his days off from college.

### Case Study TERI BARRY

Terri, former Pen Y Dre High school student completed level 2 and level 3 Childcare, overcome numerous challenges including completing the course during Covid. Teri is now employed in a Day Nursery.





# Construction & The Built Environment

**Our Construction department has an excellent reputation for delivering high quality industry recognised construction courses.**

Our students not only benefit from our dedicated construction workshops and facilities, but we also provide excellent national and international work experience opportunities, enabling our students to leave us with a range of qualifications and skills to help them stand out from the crowd. So, if you want a career in the construction industry, our courses will give you the skills and experience to build strong foundations for your future.

## City & Guilds Level 1 Pre-Foundation in Construction and the Built Environment

This construction course is designed to give students a basic approach to construction operations. It prepares learners to progress onto the Level 2 Foundation Diploma in Construction and the Built Environment. This qualification is a one-year programme for learners who wish to enter the construction industry.

**You will gain experience of the skills in a chosen construction pathway specifically in:**

- Bricklaying
- Carpentry & Joinery
- Painting & Decorating
- Plastering
- Multiskills (All four trades)

**Entry Requirements:** Applicants would benefit from achieving 3 GCSE's Grades D-F. Alternatively, applicants will be considered based on interview and a satisfactory skills scan, with a desire and commitment to complete the course they would wish to study.

### Where can I progress to next?

You could progress on to study on one of our Level 2 Foundation Diploma in Construction and the Built Environment courses, which are a combination of two of the following trades: Brickwork, Carpentry and Joinery, Painting and Decorating or Plastering. Alternatively, you could progress into apprenticeship training or employment in the construction industry.

## City & Guilds Level 2 Foundation in Construction and the Built Environment

This qualification provides a broad introduction to Construction and the Built Environment. It has been developed for individuals working in or intending to work, in the construction industry. This qualification will enable learners to go on to study a range of other Level 2 or 3 construction courses relevant to their trade interest area.

**As part of your studies, you will be required to study one construction pathway in the following two trade areas:**

- Brickwork & Groundworks
- Carpentry & Roofing
- Plastering, Painting & Decorating

**Entry Requirements:** Applicants would benefit from achieving 3 GCSEs Grades A\*-D. Or achieved the Level 1 Pre-Foundation in Construction and the Built Environment with high tutor recommendation and have achieved Level 1 Essential Skills Wales (ESW) qualifications in Application of Number and Communications. You will need to demonstrate an interest in learning more about construction with a view to progressing to training or work in the industry during your interview process.

### Where can I progress to next?

You could progress into our Level 2 Progression in Construction courses to further learning in Brickwork, Carpentry and Joinery, Painting and Decorating or Plastering. Alternatively, you could progress into apprenticeship training or employment in the construction industry.



## City & Guilds Level 2 Progression in Construction

Learners choose a trade specialism in the construction sector and develop their knowledge, skills and understanding for that trade, as contained in the National Occupational Standards. Learners will spend their time on their one chosen trade unit.

**Trade units:**

- Bricklaying
- Site Carpentry
- Painting & Decorating
- Solid Plastering

**Learners will also complete three 'core' units which cover:**

- Employment
- Employability skills; and
- General construction practices

The qualification is aimed at furthering learners' skills prior to starting an apprenticeship at Level 3 Construction within their trade area.

### Where can I progress to next?

You could progress to further learning in Brickwork, Carpentry and Joinery, Painting and Decorating or Plastering via Level 3 (Trade area) Construction pathways.

## City & Guilds Level 2 Core in Construction & Building Services Engineering PT

The Level 2 Core in Construction and Building Services Engineering provides a broad introduction to construction and the built environment. It has been developed for individuals working in or intending to work, in these sectors.

Its primary purpose is to be taken part-time by learners who have secured a Construction or BSE Apprenticeship and not previously completed the Foundation in Construction and Building Services Engineering qualification. This qualification will enable learners to go on to study a range of other Level 2 or 3 Construction and Building Services Engineering (BSE) courses relevant to their trade interest area.

**As part of your studies, you will be required to study one construction pathway in the following two trade areas:**

- Brickwork
- Carpentry
- Painting & Decorating
- Plastering

**Entry Requirements:** Applicants would benefit from achieving 3 GCSEs Grades A\* - C. Alternatively achieved the Level 1 Pre-Foundation in Construction and the Built Environment with high tutor recommendation and have achieved Level 1 Essential Skills Wales (ESW) qualifications in Application of Number and Communications. You will need to demonstrate an interest in learning more about construction with a view to progressing to training or work in the industry during your interview process.

### Where can I progress to next?

On completion, the qualification will provide a broad foundational knowledge across the construction and built environment sector as well as introductory knowledge and skills in the chosen trade area.

**The qualification provides the knowledge, understanding and skills for learners to progress onto further study, such as:**

- City & Guilds Level 2 Progression in Construction
- City & Guilds Level 3 Construction in a chosen trade area

**PPE/Equipment needed to study- Safety boots, work clothing or overalls to change for practical sessions.**



### City & Guilds Level 3 Construction (Trade Route) PT

The City & Guilds Construction (Level 3) – qualification was developed to allow those in work-based learning to demonstrate and enhance their occupational knowledge, skills and understanding within a construction trade of their choice.

**Entry Requirements:** It is aimed at learners who have either achieved the Level 2 Foundation in Construction and Building Services Engineering or will be completing the Level 2 Core in Construction and Building Services Engineering learning and assessments while on their apprenticeship. When taken as part of an apprenticeship this qualification will enable learners to be proven as competent and enter employment in the trade of their choice as well as to go on to study other Level 3 construction courses relevant to their choice of trade.

#### Where can I progress to next?

On completion, the qualification will provide learners with the skills and knowledge required for the learner to be capable of working in their chosen trade across the UK.

#### Career Opportunities

- » Carpenter, Joiner & Roofer
- » Painter & Decorator
- » Plasterer & Dry Liner
- » Bricklayer
- » Set Designer
- » Construction Project Manager
- » Quantity Surveyor
- » Architect
- » Civil Engineer
- » Structural Engineer

By studying Construction with us, you will have the opportunity to engage with local and national employers to enhance your skills and support you to progress into employment at the end of your studies.

#### These include:

- Tilbury Douglas
- Morgan Sindall
- Arc Construction
- DE Plant
- Future Valleys Construction

#### Case Study THOMAS AMOS

##### Level 3 Painting & Decorating

Former Lewis School Pengam student Thomas, said:

*"I have really enjoyed the past two years studying how to become a painter & decorator and thrilled that i am now progressing onto the level 3 diploma, this academic year. The course has been practically challenging, given it is a trade course and the skills required, but I love how creative you can be. When I achieve a task in class, it really makes me feel like I have accomplished something and this is rewarding for me, which is one of the main reasons why I love it!"*



*The course has allowed me to stretch out of my comfort zone, meeting new people and staff too. The teaching staff have been amazing and really supportive throughout my studies. They have been role models to us all and i have enjoyed listening to their expertise and advice, which is given from their own personal past experiences. Having this opportunity has allowed me to progress into a job that i love."*

THE GLOBAL CONSTRUCTION INDUSTRY  
IS EXPECTED TO MORE THAN DOUBLE  
IN SIZE BETWEEN 2020 AND 2030

STATISTA

## New for 2024

# AS Built Environment - Architecture

The WJEC GCE in Built Environment offers a learning experience which focuses on applying knowledge, skills and understanding through contextualised tasks and study. It provides an excellent overview of the built environment and the associated professions.

Skills associated with planning, developing, managing and evaluating built environment projects designing and drawing skills associated with built environment concepts Building Information Modelling (BIM) skills Surveying skills.

This course also provides an amazing opportunity to visit one of the most exciting and dynamic cities, Dubai! Here you will look into mind blowing Architectural design and learn at first hand from some of the designers and project planners.

**Entry Requirements:** 5 GCSE's grade A\*-C, applicants must have a C grade or above in GCSE Maths and English along with preferable combinations of Science/Engineering / Digital Technology /Construction.

#### What will I learn

Our Built Environment year1 learners will develop knowledge and understanding of: buildings and structures careers, roles and organisations in the built environment designing and constructing substructures, superstructures and service requirements change of use external works.

In addition to design and Planning Practices where learners will develop knowledge and understanding of: the design process and factors that influence the design process developing initial project briefs producing designs and virtual modelling planning construction methods and techniques.

#### Where can I progress to next?

By studying for the GCE AS/A Level Built Environment you will be able to gain essential employability skills that are valued by employers and higher education. Alternatively, the qualification, along with other appropriate qualifications, will help you to gain the required understanding and skills to apply for employment within the construction industry.

#### Career Opportunities

- » Architecture
- » Construction Management
- » Project Management
- » Estate Management
- » Quantity Surveying
- » Building Surveying
- » Engineering Services
- » Supply Chain Management and Design Management

WHATEVER  
GOOD THINGS  
WE BUILD END  
UP BUILDING US

JIM ROHN



# Creative Industries

Creative Industries incorporates Performing Arts, Drama, Music, Film, Photography and Art & Design. Although the courses offered are very specific there are many opportunities for cross-curricular collaboration on large-scale projects. Engagement with the community and local employers is very important and this vocational approach to project work is a huge strength within the division.

Opportunities to display practical creative work are abundant and our theatre performances, live music events, film screenings and visual arts exhibitions are of a high quality, receiving excellent feedback from parents, industry professionals and the general public. There are also opportunities to take part in educational visits to galleries or theatres in the UK and abroad.

## WJEC AS/A2 Level Art and Design (Art) FT

**Entry Requirements:** 5 GCSE's grades A\*-C, including English Language and a B in Art and Design. You will be asked to bring examples of your artwork to your interview.

## WJEC AS/A2 Level Art and Design (Photography) FT

**Entry Requirements:** 5 GCSE's at grades A\*-C, including English Language and a B in Art and Design. You will be asked to bring examples of your art work to your interview.

## Where can I progress to next?

Successful applicants usually progress onto a Foundation Studies Diploma. There is also an option to apply to one of our Foundation Degrees in Photography or Art Practice, which now has a BA(Hons) top-up year. Students can also use their Art & Design A level to build up UCAS points towards applications for university courses outside of the visual arts.

## UAL L2 First Diploma Art and Design FT

**Entry Requirements:** 4 GCSE's grade D or above, applicants must show an aptitude for Art and Design. You will be asked to bring examples of your artwork to your interview.

## UAL L3 Diploma Art and Design FT

**Entry Requirements:** 4 GCSE's grade C or above including Art GCSE or UAL/BTEC Level 2 in Art and Design. You will be asked to bring examples of your artwork to your interview.

## UAL L3 Foundation Diploma in Performing & Production Arts

**Entry Requirements:** Level 2 qualification in performing arts. Or 5 C grades at GCSE (to include one subject testing the use of English). Auditions will be required at interview.

## UAL Level 3 Foundation Diploma in Music

Our program immerses students in the vibrant world of the music industry, encompassing facets like performance, production, songwriting, composition, engineering, and business. Rooted in practical experience, this course boasts industry visits, masterclasses, and live project assignments. Aspiring professionals will sharpen their musical talents, deepen their theoretical knowledge, and enhance their communication skills.

**Entry Requirements:** Level 2 qualification in music. Or 5 grades at GCSE (to include one subject testing the use of English). You will be asked to attend an audition as part of the entry requirements for this course.

*"The facilities provided by Merthyr College within the Redhouse are industry standard and more, giving me the opportunity to use expensive and top-tier equipment"*

## Where can I progress to next?

Students can progress on to Higher Education courses. Study FD Art at the college and a University of the learner's choice for Music and Performing Arts.



By choosing to study with us, you will have the opportunity to engage with:

- Industry relevant workshops and programmes
- Screen Academy Wales
- Bad Wolf Studios
- Links with Creative Merthyr
- Annual Art and Photography Exhibitions
- Regular performances and productions
- Green Man Festival Work Placements
- National Theatre Connections Festival
- Sherman Theatre partnership
- Institute of the Arts Barcelona
- Community Music Wales

## Case Study ETHAN BRIDGES UAL LEVEL 3 FOUNDATION DIPLOMA IN MUSIC

*"The facilities provided by Merthyr College within the Redhouse are industry standard and more, giving me the opportunity to use expensive and top-tier equipment. Our tutors always pushed us to learn more about production and song writing whilst showing us different genres and how to create within them independently and in collaboration with other students as well and having the chance to perform live music to an audience inside and outside of the course. I feel I have left this 2 year course with new friends, a sense of confidence as a musician and on the right path to becoming who I want to be in life, I am grateful!"*

Ethan is now studying a BA in Music at BIMM.



## Career Opportunities

- » Artist
- » Musician
- » Graphic Designer
- » Film
- » Studio production

## Case Study EMYR STRUDWICK

UAL LEVEL 3  
PERFORMING  
ARTS - YEAR 1  
**Distinction**

Former Cyfarthfa  
Highschool learner  
Emyr said:

*"Throughout this year at college, I have developed my academic and personal skills significantly. The College has provided various opportunities such as field trips, access to external learning resources, and mental health support which has benefitted the confidence and quality of work produced by its students exponentially. Throughout this year, I have enjoyed the mixture of practical use and academic study of the topics found within my course. Access to areas such as the library has allowed me to gain a more perceptive idea of the topics within my course and the knowledge that mental health support is always accessible is very reassuring. I will continue the second year of my course with the College and hopefully attend university after completing my course; the College's support with discovering and understanding the processes of university, student finance and accommodation applications have made many students more confident in their ability to continue into further education."*



MYSTERY IS AT THE  
HEART OF CREATIVITY.  
THAT, AND SURPRISE.

JULIA CAMERON



# Digital Industries (Computing, ICT, Games Design, Esports & Media)

Our digital industry courses offer an excellent foundation for you to gain the knowledge, understanding and skills to help you increase your chances of employment, allowing you the opportunity to specialise in different areas, such as Games Design, Systems Security, Computer Security and Forensics, Mobile App design, Digital animation, Streaming, Coaching, Video editing, Website Development or programming.

## WJEC AS/A2 Level Computer Science FT

**Entry Requirements:** 5 GCSEs A\*-C, preferably Computer Science and/or Mathematics at grade B or above. An interest in programming, technology and STEM subjects would be beneficial.

## WJEC AS/A2 Digital Technology

**Entry Requirements:** 5 GCSEs A\*-C, preferably including ICT, Computer Science or Digital Technology GCSE. An interest in games development, technology and artificial intelligence would be beneficial.

## BTEC L1/L2 First Ext Certificate Information and Creative Technology FT

**Entry Requirements Level 1:** 2 GCSE grade A\*-F Applicants are required to have basic skills in Literacy and Numeracy and an interest in IT, Technology, Design and Computing

**Entry Requirements Level 2:** 4 GCSE grade A\*-D or Level 1 IT. Applicants are required to have basic skills in Literacy and Numeracy and an interest in IT, Technology, Design and Computing



## BTEC Level 3 IT with Cyber College Cymru

**Entry Requirements:** 5 GCSE's grade C or above, or equivalent. Also, an interest in IT, Digital Technology, Computing, Cyber, Programming, Web and Games Design. You will also have the opportunity to partake in a 25-day work placement.

## UAL Level 3 Games Design and Development FT

**Entry Requirements:** 5 GCSE's grade A\*-C or equivalent. Also, an interest in Games Design, Graphics, Animation, Audio and Programming. You will also have the opportunity to partake in a 25-day work placement.

## UAL Level 3 Diploma in Esports

**Entry Requirements:** 5 GCSE's grade C or above, or equivalent. Also, an interest in Competitive Gaming and the industry surrounding it, including areas such as (but not limited to); Branding, Video Production, Events Management, Streaming, Shout-casting and the opportunity to play for the Esport team. You will also have the opportunity to partake in a 25-day work placement.

### Case Study **ADAM TRINIDAD** UAL LEVEL 3 GAMES DESIGN **Distinction**

Former Blessed  
Carlos Acutis said:

*"I enjoyed studying Games Design these past two years. The tutors always helped when I needed it and I came out of the course with good friends and the grades necessary to study a Degree in Games Design at Staffordshire University."*



### Partnership with **CYBER COLLEGE CYMRU**

The college is working in partnership with Cyber College Cymru to provide opportunities for learners to engage in an industry led programme where you will benefit from working with key employers, including **Welsh Water, Bridewell, Admiral, Fujitsu** and **Thales** through mentoring, guest lectures, work placements and workshops.

**The College Merthyr Tydfil has also been recognised as a CyberFirst School College**

## UAL L3 Diploma in Creative Media, Film and TV

**Entry Requirements:** Level 2 qualification in creative media production. 5 GCSE's grade C or above (to include one subject testing the use of English). You may bring examples of any media/film work to your interview. You will also have the opportunity to partake in a 25-day work placement.

### Where can I progress to next?

Successfully completing these courses will provide you progression into employment or a Higher Education institution to study courses in various digital industries.

## Career Opportunities

- » Programmer
- » Robotics
- » Artificial Intelligence
- » 2D/3D Games Designer
- » Cyber Security
- » Computer Analyst
- » Systems Design
- » Graphic Designer
- » Content Creator

### Case Study **OLIVER JOHN COOPER** BTEC LEVEL 3 ESPORTS **D\*D\*D\***

*"I enjoyed the course a lot, I think the best parts about the course and the college were the people around me as they were very supportive and helped me learn a lot about the topic. My time at the college really helped me decide what my next steps would be after college. They have given me a great idea of what type of job I would like to do for the rest of my life."*





# Electrical Installation

The Electrical industry is a £23.6bn market so there is always a demand for electricians in the UK. Our level 1&2 qualifications are ideal for you if you are interested in a career in the electrical installations industry. It allows you to learn, develop and practice the skills required for employment and career progression.

## L1 Diploma Electrical Installation FT

**Entry Requirements:** 3 GCSE's grade D or above (including a D grade in Maths) or a suitable level 1 Electrical qualification. You must be able to demonstrate 90% attendance during your course of study.

## L2 Progression in Building Services Engineering - Electrical Installation FT

**Entry Requirements:** 4 GCSE's grade C or above (including both English and Maths) or a suitable level 1 Electrical qualification. You must be able to demonstrate 90% attendance during your course of study.

### Case Study

#### ZAC BENBOW

##### Electrical Installation Level 1 Year 1

*"I have found being at Merthyr college a very enjoyable experience. With a good atmosphere and a good workshop area. My tutor has been excellent and I look forward to coming back next year for Level 2."*

### Where can I progress to next?

Although this qualification does not aim to make candidates fully qualified electricians it enables learners to develop and practice the skills required for a career in electrical installations or electrical engineering. It is suitable for those who want to progress onto an Electrotechnical Apprenticeship programme.

# OVER 100,000 NEW ELECTRICIAN RECRUITS NEEDED BY 2032

UK TRADE SKILLS INDEX 2023

# Engineering

## Why choose to study Engineering with us?

We have fantastic facilities, excellent partnerships and apprenticeship opportunities with local organisations e.g. General Dynamics. Established partnership with the University of South Wales and opportunities to engage in European work experience placements.

Our advanced manufacturing courses encompass exciting and modern technologies in robotics, green energy and Inspection systems. Combine this with intuitive CAD / CAM procedures and expressive project work and you will receive hands-on engineering experience.

## BTEC L3 Foundation Award in Advanced Manufacturing Engineering FT A Level

**Entry Requirements:** 5 GCSE's grade A\*-C to include Mathematics, English and successful interview demonstrating motivation and commitment to the programme.

## EAL L2 Diploma in Engineering and Manufacturing Technology FT

**Entry Requirements:** Four GCSE's grade D or above (including Mathematics, English and Science), or an appropriate engineering qualification.

## BTEC L3 Certificate in Advanced Manufacturing Engineering / Enhanced

**Entry Requirements:** 5 GCSE's grade A\*-C to include Mathematics, English and successful interview demonstrating motivation and commitment to the programme.

Through studying Engineering with us, you will have the opportunity to engage in a range of employer engagement projects, trips and visits, providing the perfect opportunity for you to enhance your skills and giving you that added extra to support your progression into employment, university or an apprenticeship. Key employers, include, Panasonic, Royal Academy of Engineering, Nexperia (formerly Newport Wafer Fab), EESW STEM Cymru, KUKA Robotics, University of South Wales Rocket Society, F1 in Schools and many more!

Through studying Engineering with us, you will have the opportunity to engage in a range of employer engagement projects, trips and visits, providing the perfect opportunity for you to enhance your skills and giving you that added extra to support your progression into employment, university or an apprenticeship. Key employers, include, Panasonic, Royal Academy of Engineering, Nexperia (formerly Newport Wafer Fab), EESW STEM Cymru, KUKA Robotics, University of South Wales Rocket Society, F1 in Schools and many more!

## Career Opportunities

All types of Engineering

- » Mechanical
- » Electrical
- » Chemical
- » Civil
- » Automotive
- » Aeronautical
- » Engineering Design

### Case Study ANAYA JONES

Level 3 Enhanced Engineering Certificate Year 1

#### Distinction

Former Aberdare Community School

*"I have thoroughly enjoyed studying Engineering the past year at the college and have not only been encouraged and supported immensely but I have also been involved in the most amazing opportunities that my tutors have given me! The guidance that I received during my time has been more than enough for me to achieve the grades that have given me the amazing opportunity to work with British Airways on their Aeronautical apprenticeship scheme!"*







# WJEC AS Level Product Design FT

Product Design is an inspiring, rigorous and practical subject. It encourages learners to use creativity and imagination when applying iterative design processes, to develop and modify designs, and to design and make prototypes that solve real world problems.

Your skill development will vary from research, to design, to manufacture whilst using a range of modern and sophisticated software and hardware packages.

**Entry Requirements:** GCSE C grade or above in English Language and Maths, and the minimum of a B grade in Design & Technology along with preferable combinations of or at least Product Design, Art or Engineering again at C grade or higher.

## Where can I progress to next?

This qualification provides a suitable foundation for the study of design and technology or a related area through a range of higher education courses or direct entry into employment. Typical career paths may include Product Design, Market Research, Architecture, Animation, Set Design, Automotive industry and many forms of Engineering Design.

# DESIGN IS NOT JUST WHAT IT LOOKS LIKE AND FEELS LIKE. DESIGN IS HOW IT WORKS

STEVE JOBS



# ESOL

English for Speakers of Other Languages (ESOL) is taught at The College Merthyr Tydfil, offering learners the chance to begin or improve their English. Our ESOL courses focus on everyday English, communication, numeracy, computer skills, vocational and employability skills.

As part of the global market our students are employed across the world, but some chose to reinvest their newly acquired skills and establish their own businesses in the Merthyr Tydfil Borough. ESOL also gives learners confidence to gain employment in a range of sectors, for example, as translators, teaching assistants, the police and supervisors in local factories.

English for Speakers of Other Languages (ESOL) is taught at The College, offering learners the chance to begin or improve their English and progress to a Level 2 standard.

**Entry 1 - Beginners**

**Entry 2 - Advanced beginners**

**Entry 3 - Pre-intermediate**

**Level 1 - Intermediate**

**Level 2 - Upper-intermediate**

**Entry Requirements:** No formal entry requirements, applicants are selected on interview.

**Where can I progress to next?**

Many of our learners progress to full-time or part-time courses at the college, including apprenticeships with local businesses, volunteering with local schools as well as progressing onto mainstream course such as childcare, computing and business. Some have also progressed onto higher education courses including computing, business and even attending other universities.

**Case Study**

## OLEKSANDR & NATALIA BONDARENKO

Oleksandr and Natalia Bondarenko are from Ukraine and joined the college in September 2022. They have four children and are settling into their new community. Oleks studied ESOL Level 1, while Natalia studied ESOL Entry 2. Both are looking forward to progressing onto the next level in September 2023. Oleks is also setting up his own business in the area.



**Case Study**

## PATRYCJA MOCKO

Patrycja Mocko has been studying ESOL for the past 4 years. She took part in online lessons during COVID and then decided to repeat a year to further improve her skills. She has just completed ESOL Entry 3 and will progress onto ESOL Level 1 in September 2023.

# IMPROVE YOUR LANGUAGE SKILLS AND OPEN UP YOUR WORLD

# Foundation Learning

**Life Skills**

**Skills Development**

**E3 in Workskills**

**Supported Internship**

**Entry Requirements:** All of our Foundation Learning courses require an interview with the teaching staff before acceptance onto the course. Progression between levels is not automatic.

**Where can I progress to next?**

Following the successful completion of the course, You may be able to progress to a Level 1 course in other areas, or choose to move into work.

**Case Study**

## AARON HAYWARD

ILS Supported Internship

Aaron was a participant in the Supported Internship with Prince Charles Hospital. When asked about the internship Aaron commented

*"I enjoyed seeing my tutors and colleagues each day. I really liked working with mentors and work staff. I feel much more confident when meeting and talking to new people. The internship has improved my confidence a lot"*

**Case Study**

## MORGAN HUGHES

ILS Supported Internship

*"I attended the 1 year Supported Internship in conjunction with Merthyr College, Elite and CTMUHB. It was a good experience. I worked in Portering and Catering with some great mentors and wonderful support from my Tutor and Job Coach. I gained experience which helped me secure part-time paid employment as a catering assistant in a local climbing centre. Since leaving the course, I have been supported in securing full-time paid employment on a Supported Shared Apprenticeship Scheme with Tilbury Douglas working as a Catering assistant in a new canteen onsite at Prince Charles."*



# DEVELOP A PASSION FOR LEARNING. IF YOU DO, YOU WILL NEVER CEASE TO GROW.

ANTHONY J. D'ANGELO



# Hairdressing & Beauty

From Level 1 through to Level 3, our hairdressing and beauty courses provide you with the opportunity to further develop your skills and enhance your career and employment prospects in the hair and beauty industry.

All of our courses equip learners for the world of work by providing the opportunity for them to work within a realistic working environment whereby they are required to develop key employability skills.

**VTCT L1 Diploma Hairdressing FT**

**VTCT L2 Diploma Hairdressing FT**

**VTCT L3 Diploma Hairdressing FT**

**VTCT L3 Certificate Barbering PT**

**VTCT L2 Diploma in Beauty Specialist Techniques FT**

**VTCT L3 Diploma in Beauty Therapy Treatments FT**

**Entry Requirements:** Applicants are selected on interview. Good literacy skills are required. L2 or equivalent needed to progress to L3. There is no automatic progression between levels.

## Where can I progress to next?

These qualifications may lead to apprenticeships or employment in the industry.

## Career Opportunities

- » Hairdresser
- » Beautician
- » Customer Service Role
- » Nail Technician
- » Barbering

### Case Study PAIGE THOMAS

Paige was a previous learner at the college completing a course which wasn't really for her, she lost motivation during lockdown and didn't complete the course, she then enrolled on Level 1 beauty in 2021, which she successfully completed. She then went on to enrol and successfully complete level 2 beauty last academic year and has now enrolled onto Level 3 beauty. Her attendance is excellent and is a very hardworking learner, completing all course work ahead of deadlines provided. She's unsure where Level 3 beauty will take her but I think she will be brilliant at being self-employed once gained some experience in industry.



### Case Study DION ARCHER Level 3 Hair

Dion Archer is 19 and previously attended St Johns Baptist school and has been a MAT learner in Merthyr college for three years who has now successfully completed level three hairdressing and secured employment in a local hair salon KFJ studios. Dion has competed in a number of competitions during her time in college, demonstrating skills at a high standard and achieving numerous awards. Moving forward she will now represent both Merthyr college and Wales in the World skills Uk final in November 2023 whereby she is one of only eight Learners across the UK.



**HAIRDRESSING & BEAUTY TREATMENT INDUSTRY INCREASED 35% IN 2022**

# Health & Social Care

Our Health and Care courses offer an excellent route into working within an education or health and social care setting alongside the opportunity to progress to HE courses.

## City and Guilds/WJEC L2 Health and Social Care Core Principles and Contexts

**Entry Requirements:** At least 4 GCSE's grade A\*-D including C grade in English language and or/C in Maths and Science and a formal interview.

## City and Guilds/WJEC L3 Certificate Health and Social Care

**Entry Requirements:** Entry onto this course is by interview and requires at least five GCSE's grade A\* -C including Mathematics, English and Science.

## Where can I progress to next?

Learners could progress to higher education courses in areas including: Midwifery, Police studies, Speech and language therapy, Psychology, Occupational health, Social work and Nursing.

**The College is working in partnership with the Royal College of Nursing to offer the first Nursing Cadet scheme within an education setting.**

The College Merthyr Tydfil has joined in partnership with The Royal College of Nursing to be the first college of further education to offer the RCN Prince of Wales Nursing Cadet scheme to college learners wishing to pursue a career in nursing or other professions in the NHS.

The scheme, aims to inspire young people, particularly those from disadvantages backgrounds, to work in health and care by giving them access to opportunities for academic study and hands-on experience in the nursing and health sector.



**ONLY A LIFE LIVED IN THE SERVICE TO OTHERS IS WORTH LIVING**

ALBERT EINSTEIN

## Career Opportunities

- » Social Worker
- » Nursing (Adult, Mental Health and Paediatric)
- » Midwifery
- » Paramedic
- » Operating Department Practitioner
- » Psychology
- » Occupational Therapist
- » Police
- » Probation Officer
- » Criminology
- » Dental Nursing

### Case Study ELLIE PROBERT

Health and Social Care level 3

**AB in Health and Social Care and a C in Medical Science**

Former Cyfarthfa High School learner Ellie said:

*"I feel that having the opportunity to experience BLS and manual handling through Nursing Cadets before university has been an amazing opportunity giving me the knowledge and insight to healthcare work before starting uni and it's really prepared for starting a career in paediatric Nursing. The support at Merthyr college has always been amazing."*

Ellie has now gone on to USW to study Paediatric Nursing.





# Humanities, Social Sciences & Languages

Our Humanities and Languages division provides a wide range of courses, including History, Geography, Welsh, English Language and Literature.

## WJEC AS/A2 Level Law

**Entry Requirements:** 5 GCSE's grade A\*-C, including a B grade or above in GCSE English.

## WJEC AS/A2 Level English Literature

**Entry Requirements:** 5 A\*-C including English Language and Maths, B and above in English

## WJEC AS/A2 Level English Language & Literature

**Entry Requirements:** 5 A\*-C including English Language and Maths, B and above in English

## WJEC AS/A2 Level Criminology

**Entry Requirements:** You will require 5 GCSE's grade A\*-C including English.

## WJEC AS/A2 Level History

**Entry Requirements:** A minimum of 5 GCSE's grade A\*-C, with preferably a B grade in History or English.

## WJEC AS/A2 Level Religious Studies

**Entry Requirements:** 5 GCSE's grade A\*-C including English Language. A grade B or above in English Language would be highly desirable.

THE BEAUTIFUL  
THING ABOUT  
LEARNING IS  
NOBODY CAN TAKE  
IT AWAY FROM YOU

B.B. KING

## WJEC AS/A2 Level Cymraeg Ail Iaith

**Entry Requirements:** 5 GCSE's grade A\*-C including Welsh C grade or above in English Language plus a B grade in GCSE full course Welsh or an A grade in short course Welsh.

## WJEC AS/A2 Level Psychology

**Entry Requirements:** 5 GCSE's at grades A\*-C including a grade B or above in English Language or literature and a grade C in Mathematics is desirable.

## WJEC AS/A2 Level Geography

**Entry Requirements:** 5 GCSE's grade A\*-C including English language, Maths and Science. GCSE Geography is desirable but not essential however, this is at the discretion of the tutor. If GCSE Geography has been studied at GCSE a C grade or above is required.

## Career Opportunities

- » Behavioural Psychologist
- » Forensic Psychologist
- » Teaching
- » Probation Officer
- » Police Officer
- » Criminologist
- » Museum Curator
- » Journalist
- » Social Research Officer
- » Copywriter

## WJEC AS/A2 Level Government and Politics

**Entry Requirements:** A minimum of 5 GCSE's grade A\*-C with a B grade in History or English.

## WJEC AS/A2 Level Sociology

**Entry Requirements:** 5 GCSE's grade A\*-C including a grade B or above in English Language or English Literature. You do not need to have taken sociology at GCSE.

## Where can I progress to next?

Successful completing of any of these A levels subjects can help you progress onto a wide variety of university level courses.

### Case Study

### CARI HOPE DAVIES

A Level English Literature

A Level History

A Level Sociology

**A\*A\*A\***

Former Afon Taf High school student said:

"I've really enjoyed studying English, History and Sociology over the last two years.

Studying these subjects with the support of the amazing tutors in Merthyr College has prepared me to pursue a degree in law at university."

Cari has gone on to study Law at the University of Oxford.





# Motor Vehicle Technology

The IMI is the professional body for people employed or seeking employment in the motor industry. As the leading awarding body for the retail motor industry, the IMI offers a range of Vocationally Related Qualifications (VRQs), Vocationally Competent Qualifications (VCQs) or Diplomas.

These courses provide the widest range of technical knowledge, which is necessary to become a skilled motor vehicle technician, master technician or allow progression to higher education. There is a qualification suited to all levels of applicants from Entry Level right through to Level 3 technician courses.

## CG L1 Diploma Vehicle Systems FT

**Entry Requirements:** GCSE grades D-F in English, Mathematics and a Science based subject.

## IMIAL L2 Diploma in Light Vehicle Maintenance and Repair Principles FT

**Entry Requirements:** 4 GCSE grade A\*-D or above preferably in Mathematics, English and Science or level 1 Motor Vehicle qualification.

## IMIAL L2 Diploma in Vehicle Fitting Principles

**Entry Requirements:** Three GCSE's grade C or above preferably in Mathematics, English and Science or level 1 Motor Vehicle qualification.

## Where can I progress to next?

Learners may progress into apprenticeship or full-time employment. As a division we are continuing to build our relationship with Aston Martin and other local and national leading sectors and suppliers within the motor vehicle industry. Opportunities will arise for learners who are interested in obtaining an additional qualification in Advanced Driver Assistance Systems (ADAS) and gaining a hands-on experience in the Motorsport Industry.

## IMI L1 Award in Advanced Driver Assistance Systems (ADAS) Awareness Part Time – (6hrs)

This qualification is learners aged 16-18 or 19+ who have an interest in gaining the knowledge to work safely within the automotive retail industry as it continues to see an increase in vehicles with Advanced Driver Assistance Systems (ADAS). It is therefore designed to provide learners with an introduction to the knowledge of safe working practices, the dangers surrounding it and the precautions required to avoid potential injuries/accidents.

**Entry Requirements:** There are no formal entry requirements for this qualification and learners are not expected to have any prior knowledge or experience, however, an interest in the subject area is advisable.

## Where can I progress to next?

This qualification will help support progression onto qualifications that further develop their knowledge and skills in calibrating ADAS sensors and systems:

## IMI Level 2 Award in Advanced Driver Assistance Systems (ADAS) Calibration

## IMI L2 Award in Advanced Driver Assistance Systems (ADAS) Calibration Part Time – (16hrs)

This qualification is for learners in the 16-18 and 19+ age groups. These learners will have an interest in gaining the knowledge in diagnosing, rectifying and recalibrating Advanced Driver Assistance Systems (ADAS).

The content of this qualification has been designed to give learners the knowledge and skills required to work safely whilst carrying out diagnostic, testing and repair activities to ADAS sensors and systems. This may include vehicles that have or have had accident damage for wheel geometry adjustments.

**Entry Requirements:** Individuals interested in taking this course will need to possess appropriate vehicle maintenance and repair, accident repair and autoglazing knowledge and skills at level 2 or equivalent

## Where can I progress to next?

Progression onto qualifications that further develop their knowledge and skills within a technical role, carrying out repair and replacement of high voltage components on ADAS vehicles:

## Level 3 Award in Diagnosing, Rectifying and Recalibrating Advanced Driver Assistance System (ADAS) Components

## Career Opportunities

- » Motor Vehicle Technician
- » Motorsport Industry
- » Electric Vehicle Technologist
- » Motor Vehicle Engineer
- » Hybrid Technician
- » ADAS Calibration

THE AUTOMOTIVE INDUSTRY IS RACING TOWARD A NEW WORLD, DRIVEN BY SUSTAINABILITY AND CHANGING CONSUMER BEHAVIOR, ENCOMPASSING ELECTRIC VEHICLES, CONNECTED CARS, MOBILITY FLEET SHARING, ONBOARD SENSORS, NEW BUSINESS MODELS, AND ALWAYS-ON CONNECTEDNESS

FORBES



# Science & Mathematics

An A Level or BTEC qualification in Science or Mathematics will provide you with a stepping stone on to many different career paths. There are countless opportunities in many fields, all of which make a positive difference to people's lives.

## WJEC AS/A2 Level Biology

**Entry Requirements:** Minimum of 5 GCSE's grade A-C including at least a B grade in both Mathematics and English, BB in double award science or BBB triple science.

## WJEC AS/A2 Level Chemistry

**Entry Requirements:** Minimum of 5 GCSE's grade A-C including at least a B grade in Mathematics (usually Higher Tier), BB in double award science or BBB triple science.

## WJEC AS/A2 Level Physics

**Entry Requirements:** Minimum of 5 GCSE's grade A-C including at least a B grade in Mathematics (usually Higher Tier), BB in double award science or BBB triple science.

## WJEC AS/A2 Level Mathematics

**Entry Requirements:** Minimum of 5 A\*-C grades including a minimum of an A in GCSE Mathematics.

## WJEC AS/A2 Level Further Mathematics

**Entry Requirements:** Minimum of 8 A\*-C grade including a minimum of an A in GCSE Mathematics.

## BTEC L3 National Foundation Diploma in Applied Science Yr1 FT

**Entry Requirements:** 5 GCSEs at grade C or above including at least a C in Science (or a distinction in Level 2 Diploma in Applied Science) and a C in both English and Mathematics.

## Where can I progress to next?

The applied sciences offer a wide variety of careers, such as: Forensic scientist, Physiotherapy, Nursing, Social work, Drug researcher, Medical physics technician, Science technician, Sport, and many more. Your BTEC will sharpen your skills for employment or further study.

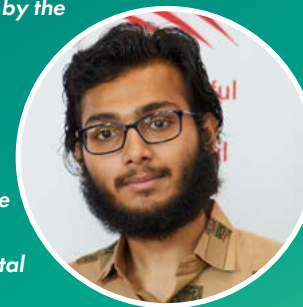


## Case Study ISMAIL SHAIKH

**A in Psychology, A in Chemistry, A in Physics and A\* in Biology**

"The support provided by the teaching and the non-teaching staff was paramount to my success and was a stepping stone which played a significant role for the betterment of my wellbeing and mental health during my time here. The thing I enjoyed most in college was my time with my teachers (both inside and outside class) as they were the light which helped me guide through the mist; their experiences, wisdom and unique teaching style helped us especially me to push my limits and enable to reach my potential."

Ismail is now studying Medicine at Exeter University.



## Case Study LAUREN HIGGINS

**BTEC Level 3 Applied Science D\*D\*D**

"The science department feel like family, I'm glad I had their support and guidance during the last 2 years. The BTEC and A level science course is best for those scientific courses at university because you learn science reports, you learn to reference, you understand science more deeply and keep deadlines. You visit labs and get more funding for lab experiments as well as more support than your a-level equivalent. I can say educationally, I have been given a strong foundation for Uni."

## Case Study DANIEL MCALEER

**A\* in Physics, A\* in Further Maths and an A in History**

Former Cyfarthfa pupil Daniel said:

"I had a great experience studying at the College, and really benefitted from the opportunities and support from the tutors there. The STEM department in particular were always willing to go above and beyond to support my studies. This has allowed me to progress to study Mathematics and Physics at the University of Bath."

Daniel is now going on to study a Mathematics and Physics Degree at the University of Bath.

## Career Opportunities

- » Scientist
- » Pharmacist
- » Bio-chemist
- » Vet
- » Quantity Surveyor
- » Doctor
- » Forensic investigation and analysis
- » Civil/Mechanical Engineering

# THE MOST IMPORTANT THING IS TO NEVER STOP QUESTIONING

ALBERT EINSTEIN



# Sport

The sports sector has been growing for many years and the rate of growth is as high as ever. Jobs exist in coaching, administration and management, fitness advice and Sports Science.

Our comprehensive range of courses combined with our fantastic reputation for sporting excellence and our commitment to providing outstanding sporting opportunities will ensure that you receive the best possible sporting education with us.

## BTEC L2 First Extended Certificate in Sport FT

**Entry Requirements:** 4 GCSE's grade A\*-D are desirable.

## BTEC L3 Foundation Diploma in Sports Coaching & Development

**Entry Requirements:** Interviews required, Minimum of 5 GCSE's grade A\*-C.

## BTEC Level 3 National Extended Certificate in Sport and Exercise Science A Level

**Entry Requirements:** Minimum of 5 GCSE's grade A\*-C including Maths and English.

### Case Study NAOMI DORRICOTT

Former Cyfarthfa High School pupil, Naomi, achieved fantastic results in her History, Sport and Biology A levels. She's now heading to study Sport and Exercise Science at Swansea University.



## L2 Fitness Instructor PT\*

**Entry Requirements:** All applicants must be aged 19 and over, with Gym Experience and a general interest in Exercise and Fitness.

## L3 Personal Trainer PT\*

**Entry Requirements:** Applicants need to have completed a L2 Fitness Instructor course and be aged 19 and over.

**\*Our Fitness Instructor and Personal Trainer courses are covered by PLA, please see PLA page for further details**

## Where can I progress to next?

These courses provide the knowledge, understanding and skills for students wishing to study Sport related Foundation degrees or degrees, or those seeking full-time employment in the Sports sector.

## Career Opportunities

- » Sports Coaching
- » Fitness Instructor
- » Sports Analyst
- » Strength and Conditioning
- » Leadership and Management

THE MORE THE  
LOVE FOR SPORT,  
THE MORE IT  
LOVES US BACK

JAYANTI JHA

# SETUP

Working in partnership with Active Merthyr Tydfil, the programme provides a unique and effective coach education and training programme. Learners can achieve their academic aspirations, helping them to progress successfully into employment, an apprenticeship or higher-level study in the field of Sport and Active Leisure.

The programme, which is the first of its kind in the local region, provides a brand new 'employability' strand to the college's existing BTEC Level 3 Sports Coaching course. It provides our learners with the added value and support they require to help them stand out from the crowd and secure future employment or university places.

## Our three key strands:

### 1. Industry Awareness

Offering an insight into how the Sport and Active Leisure Industry works, and the importance of government led initiatives to shape their career.

### 2. Additional Qualifications

Providing learners with the opportunity gain industry specific qualifications to start them on their journey to a lifelong career in the Sport and Active Leisure Industry.

### 3. Vocational Placement

Providing high quality placements for learners to develop skills learned and gain invaluable industry experience.

The programme places an emphasis on learner's awareness and understanding of the sports industry and sector through lectures, guest talks, visits, placements and workshops.

Our learners will have the opportunity to undertake high quality community-based placements through Active Merthyr Tydfil's network of providers, giving them the chance to put into practice, the theory, knowledge, and skills they are gaining in the classroom, whilst at the same time broadening their understanding of the careers available in this sector.

SETUP learners will be working with a variety of organisations which will allow them to not only gain qualifications and experience, but to help shape their futures. These include Active Merthyr, local primary and secondary schools, community sport groups, local gyms and National Governing Bodies.

Learners will also have the opportunity to undertake additional qualifications to complement and add to their BTEC level 3 qualification, including Sports Leaders, First Aid, Safeguarding, Disability Inclusion Training, Physical Literacy, FAW Leaders, WRU Tag Leaders and many more.

### Case study ERIN MCNULTY

Former Blessed Carlo Acutis pupil Erin received outstanding vocational results, achieving a Distinction in her BTEC L3 National Foundation Diploma Sports Coaching and Development course.

*"What I enjoy most about my course is the opportunities it has provided me for future employment. I have completed a variety of extra qualifications such as First Aid and different Sport Coaching Awards. I would say the new SETUP program that is involved with my course at the college has helped me gain a lot of self-confidence, as well as placements and experience."*



STAND OUT  
FROM THE  
CROWD AND  
SECURE FUTURE  
EMPLOYMENT  
OR UNIVERSITY  
PLACES



# Public Services and Outdoor Adventure

These courses are designed for students who wish to pursue a career in the uniformed services. They provide the skills and knowledge relevant to employment in the police, fire, prison and armed services.

There will be a good variety of activities and experiences provided by the Police, Army, Navy, RAF, Fire Service and Youth Service. These activities will give you a better understanding of the work they do and what it would be like to be a part of their organisation. You will also have access to The University of South Wales Hydra Minerva Suite to experience managing major incidents.

## BTEC L2 Diploma in Preparation for Public Services

**Entry Requirements:** Students must have a desire to work in the public services. 4 GCSE's grade A\*-D are desirable.

## BTEC L3 National Foundation Diploma in Uniformed Protective Services FT

**Entry Requirements:** Entry is by interview: Minimum of 5 GCSE's grade A\*-C.

### Case Study ELLA EVANS

Year 2 Public Services

*"My future aspirations after completing my studies are to move on to university to further my education and hopefully pursue a career in policing or teaching."*

*I found the teaching quality and style helped me develop my skills and knowledge of the public sector and the roles and responsibilities involved in being a part of a public services. My tutors allow me to learn in the way that works best for me and I think that is why I enjoyed college and was able to accomplish my goals. My initial impression of Merthyr College was a wide range of courses and activities that I was able to participate. There was also a lot of support from the college in regards to choosing courses and support needed during studies."*



### Where can I progress to next?

The courses provide the knowledge, understanding and skills for students wishing to enter a career in the public services or armed forces. Many students successfully progress on to university to study Criminology, Public Services, Youth Work or Police Studies or progress directly into the Uniformed Public Services.

### Career Opportunities

Uniformed Public Services, including:

- » Police
- » Fire Service
- » Armed Forces
- » Outdoor Instructor
- » Blue Light Service
- » Youth Worker
- » Border Control
- » Prison Officer

**THERE'S NO GREATER CHALLENGE AND THERE IS NO GREATER HONOR THAN TO BE IN PUBLIC SERVICE**

CONDOLEEZZA RICE

# Travel & Tourism

Want to travel the world and be a part of a vibrant exciting industry? Travel and Tourism is one of the fastest growing sectors in the UK and abroad, with this industry offering you exciting and fulfilling career opportunities.

## BTEC L2 Extended Certificate in Travel and Tourism FT

**Entry Requirements:** 4 GCSE A\*-D grade.

## BTEC L3 National Foundation Diploma Travel and Tourism FT

**Entry Requirements:** Applicants are expected to possess a minimum of 5 GCSE passes at A\*-C grades including English Language and Maths or equivalent.

NEW for 2024

## WJEC Level 3 Applied Extended Certificate in Tourism (AS/A2 Level)

**Entry Requirements:** 5 GCSEs A\*-C including C in English Language and Maths

### Where can I progress to next?

Successful completion of these courses will enable you to progress onto the colleges Foundation Degree in Business or a travel related degree at another Higher Education institution or directly into employment in the travel, hospitality or leisure industry.

### Career Opportunities

- » Events Management
- » Hospitality Management
- » Destination Management
- » Sustainable Tourism Specialist
- » Research and Analysis
- » Travel Journalism
- » Marketing and Sales
- » Cruise operations
- » International Travel and Tourism Management

### Case Study ETHAN SCRIVEN

Former Pen-Y-Dre pupil Ethan Scriven achieved a triple distinction star in Travel and Tourism. Commenting on his experience, Ethan stated:



*"I am overwhelmed by the support I have had since studying at the college. Any worries or issues I have, a member of staff is always on hand to offer advice and motivate me to develop my career. Since completing my course, I have now secured a place at University of Wales Trinity St David to study Management of Tourism"*

**VALUE OF THE TRAVEL & TOURISM INDUSTRY SET TO RISE TO NEARLY \$9.5 TRILLION IN 2023**

WORLD TRAVEL & TOURISM COUNCIL







# Access to HE

Access courses are designed for those with life experience, which means they are usually suitable for those over 19 years of age.

## Agored L2 Certificate in Skills for Further Study FT

**Entry Requirements:** No formal qualifications are required. All prospective students are interviewed and assessed prior to being offered a place.

## Agored L3 Access to Higher Education Diploma Healthcare and Nursing FT

**Entry Requirements:** There are no formal entry requirements, we give full individual and careful consideration to every application. We also expect to see good interpersonal skills, commitment to the area of study and enthusiasm and understanding of your chosen career route.

### Where can I progress to next?

Successful completion of these courses will enable learners to progress successfully on to a relevant degree course and then into a career such as: Nursing, Midwifery, Operating Department Practitioner, Social Work, Occupational Health, Podiatry, Radiography.

### Case Study DYLAN YOUNG MURRAY

Through hard work and determination Dylan achieved 45 distinctions (the maximum number of distinctions possible) in his Access L3 to Higher Education course. As a result of this incredible achievement, Dylan has progressed to study at Swansea University to study BSc (Hons) Paramedic Science.

## Agored L3 Access to Higher Education Diploma Social Sciences FT

**Entry Requirements:** There are no formal entry requirements, all prospective students are interviewed and assessed prior to being offered a place.

### Where can I progress to next?

On successfully completing the course, students achieve the Access to HE Diploma qualification. This is a nationally recognised qualification that is accepted for entry into Higher Education courses.

### Case Study LIBBY MICHAEL

Through hard work and determination Libby achieved 45 distinctions (the maximum number of distinctions possible) in her L3 Access to Higher Education Humanities course. As a result of this incredible achievement, Libby has now progressed to study at Cardiff Met University to study BA in Primary Teaching with QTS.



# AN INVESTMENT IN KNOWLEDGE PAYS THE BEST INTEREST

BENJAMIN FRANKLIN



# HE Courses

The College Merthyr Tydfil has a unique partnership with the University of South Wales to provide a comprehensive range of Higher Education courses on your doorstep!

This ground breaking initiative provides you with the opportunity to study at your local College Merthyr Tydfil and gain a qualification awarded by the University of South Wales.

## Foundation Degree Art Practice FT

**Entry Requirements:** If you can show portfolio evidence of an interest in art or other relevant skills or prior learning, you will not require formal qualifications but will be invited to attend an interview.

## BA Hons Degree Art Practice FT

**Entry Requirements:** Completion of Foundation Degree or completion to level 5 in Art or similar discipline.

## Foundation Degree Business Management FT/PT

**Entry Requirements:** All learners under 21 must obtain a level 3 BTEC qualifications or two A Levels. 21 and over will be subject to interview.

## BA (Hons) Degree Business Management FT/PT

**Entry Requirements:** Achieved an FD but not necessarily in Business.

### HE Case Study MOLI HARRINGTON PGCE

"My name is Moli and I am a former pupil of Ysgol Gyfun Rhydywaun where I gained my 4 A Levels. I then completed my BSc with Honours in Health and Social Care and graduated from Swansea University in 2021. I decided to study a PGCE course at The College Merthyr Tydfil which was a two-year course. I was working full time in an educational organisation and I completed my PGCE in 2023. The support I received from the college was outstanding and the course was very organised, thorough, inspiring, and innovative. Merthyr College offers a range of courses to suit everyone, and I cannot recommend them enough to anyone. The best decision I made was to complete my PGCE which has enabled me to gain professional and personal skills to create a pathway for a professional career."



## Foundation Degree Psychology FT

**Entry Requirements:** You will normally have to have one of the following: 1. BTEC vocational qualification at level 3 in an appropriate area 2. At least an A Level pass in an appropriate area 3. An alternative level 3 qualification in an appropriate area or 4. Mature applicant.

## HND in Computing FT

**Entry Requirements:** A BTEC National diploma in a relevant subject or two A level subjects, at least one in a relevant subject. Students should also have at least four GCSE's including mathematics at grade C and above.

Mature students are welcome on the course, we consider accreditation of prior learning, work-based learning and candidates career aspirations.

## Foundation Degree in Esports FT

**Entry Requirements:** A BTEC National Extended Diploma in a relevant subject or two Advanced level subjects, at least one in a relevant subject. Mature students are welcome on the course, we consider accreditation of prior learning, work-based learning and candidates career aspirations.

## Professional Graduate Certificate in Education (PGCE) PT

**Entry Requirements:** Available for both graduates and non-graduates. Maths and English Language GCSE grade C or above are desirable. DBS check required.

## Certificate of Higher Education in Community Health and Wellbeing FT

**Entry Requirements:** Applicants under 21 will require a level 3 qualification or equivalent. Applicants over 21 may be accepted without qualifications but will be required to demonstrate readiness to study at level 4. All offers will be subject to an interview, written assessment and a satisfactory reference.

### HE Case Study MEGAN CLACK

FD Business Management

#### Distinction

"I chose to study at The College Merthyr Tydfil as I wanted to be able to work whilst studying close to home. The course appealed to me as it covers all aspects of business management from marketing to HR and accounting for example. I was initially concerned whether I would be able to juggle working alongside studying but I have enjoyed the challenge and with the support of college tutors I have achieved a distinction in FD Business Management. I am looking forward to progressing onto the BA in September at the college with my classmates."



# A GOOD EDUCATION IS A FOUNDATION FOR A BETTER FUTURE

ELIZABETH WARREN



# Panasonic Trust Future Engineering Award

The college is working in partnership with the Royal Academy of Engineering and Panasonic Trust to take forward 'The Welsh Valleys Engineering Partnership Project', an initiative designed to establish a support programme in the Blaenau Gwent area to embed sustainable, systemic change in engineering education in South Wales and to encourage greater number of young people in the region to study STEM subjects and equip them for possible careers as engineers and technicians.

As part of this project, we are offering 10 bursaries of £2000 each for learners coming from the Merthyr Tydfil schools who are wishing to progress onto a career in Engineering and are opting to study subjects that will help them to pursue this career.

Applications for the Bursaries open at the end of January each year. Your STEM teachers in school will let you know when they are available and support you to complete your application.

For further details on the bursary, please contact **Shelby Berry** on [s.berry@merthyr.ac.uk](mailto:s.berry@merthyr.ac.uk)

## How will the Panasonic Trust Future Engineering Award benefit me?

Becoming a PTFEA at the college, will enable you to:

- Gain a laptop from Panasonic to support you during your studies at college
- Participate in key employer engagement sessions, projects and activities with major employers such as Panasonic, Safran and Morgan Sindall

## TOM MEREDITH WAS AWARDED THE BURSARY IN SEPTEMBER 2022

*"Being awarded the bursary meant a lot to me and I'm really grateful for the opportunities it provided. As well as being given a laptop for my studies I had the chance to take part in outreach, speaking to younger people about engineering and that really helped build my confidence. The financial side of the bursary was amazing in helping me to buy equipment, tools and also to pay for me to attend an Engineering Summer Programme outside of college. That experience really helped me make up my mind - this was definitely what I wanted to do as a career. I have used these opportunities to apply for practical experience with employers and am pleased to be starting a three-year apprenticeship this October. The bursary gives students support to make choices and take chances to improve their skills. I am so glad I applied."*



## Panasonic



The College Merthyr Tydfil

# Personal Learning Accounts (PLA)

Take advantage of our FREE and FLEXIBLE courses across a range of key sector areas.

If you're over 19, in a job earning less than £30,596 a year and want to take the next step to a great career, a Personal Learning Account could be just what you're looking for.

## What is a personal learning account?

Personal Learning Accounts provide a flexible and fully funded learning entitlement model to support employed individuals earning under 30K as well as those on furlough or who's jobs are at risk, gain the right skills to either change careers or progress in employment at a higher level. The courses are specifically designed to address vocational training in sectors where there is a skills shortage to ensure the future needs of the economy are met.

## Who is eligible?

### Individuals must:

- Reside in Wales
- Want to gain skills/qualifications in priority sectors
- Be aged 19 years old or over

### In addition, Individuals must meet at least one of the following criteria:

- Employed (including self-employed) and earning under the median income (£30,596)
- Workers on zero hours contracts
- Agency staff
- At risk of being made redundant
- Offenders on day release
- In addition, full-time carers (paid or non-paid) may be offered PLA funded provision where there is capacity on existing courses (i.e. infill).

## How will a PLA benefit me?

- Improve prospects - giving you the skills to retain or secure a job
- Help you to progress to the next stage of your career
- Help you gain the skills you need to support a career change

**Want to apply for a Personal Learning Account? Or still unsure if you are eligible? Visit our website and submit an expression of interest. Please note, eligibility is subject to change.**

For more information contact

**Jo Thomas** at [j.thomas@merthyr.ac.uk](mailto:j.thomas@merthyr.ac.uk)

# TAKE ADVANTAGE OF OUR FREE AND FLEXIBLE COURSES ACROSS A RANGE OF KEY SECTOR AREAS



# Next Steps

## Step 1 – Identify the right course for you

Check out our broad range of courses and subject areas available at the college and find out as much as you can about them through:

- » Our prospectus
- » Website: [www.merthyr.ac.uk](http://www.merthyr.ac.uk)
- » Visiting open evenings
- » School based information events.
- » Careers Adviser
- » Telephone one of our Admissions team on: 01685 726012
- » Email: [admissions@merthyr.ac.uk](mailto:admissions@merthyr.ac.uk)

## Step 2 – Make an application

Head over to our website – [www.merthyr.ac.uk](http://www.merthyr.ac.uk) and choose the course you are interested in and then click on the Apply Now button. If you are applying for A levels, you just need to click on your first choice and then it will give you the option of adding the rest of your courses at the end of your application process.

## Step 3 – Interview and WEST assessment

You will be invited for an interview to discuss which course you are best suited to. We will also ask you to complete an initial assessment for numeracy and literacy.

## Step 4 – Your course offer

You will receive an email, text or letter offering you a place on your chosen course(s) or the opportunity to discuss alternative options with our Admissions team. We will ask you to confirm your acceptance of the offer by email or telephone.

## Step 5 – Enrolling at the college

You will be sent a welcome pack with details of how to enrol at the college. Our finance team will provide you with the information you need to apply for any additional grants to support you during your studies.

## Additional Learning Support

During the application process, you will be encouraged to disclose any Additional Learning Needs and/or disabilities so we can offer effective support. The college additional learning needs coordinator (ALNCo) can provide advice and support to learners, parents, carers/guardians and members of staff.

Once an offer is made and/or accepted the college will ascertain any learning support currently being offered so that the college can prepare support in advance of you being enrolled.

The ALNCo will assess your support requirements for interview and on program. Disclosures that you made on your application at interview or at enrolment will all be passed on to the ALNCo.

A confidential interview can be requested if you would prefer to discuss any Additional Learning Needs and/or disabilities. You may choose to bring an advocate to the meeting if you wish to do so.

Please contact:

**Eleri Evans (ALNCo)**

Telephone: **01685 726021**

Email: [eevans1@merthyr.ac.uk](mailto:eevans1@merthyr.ac.uk)

